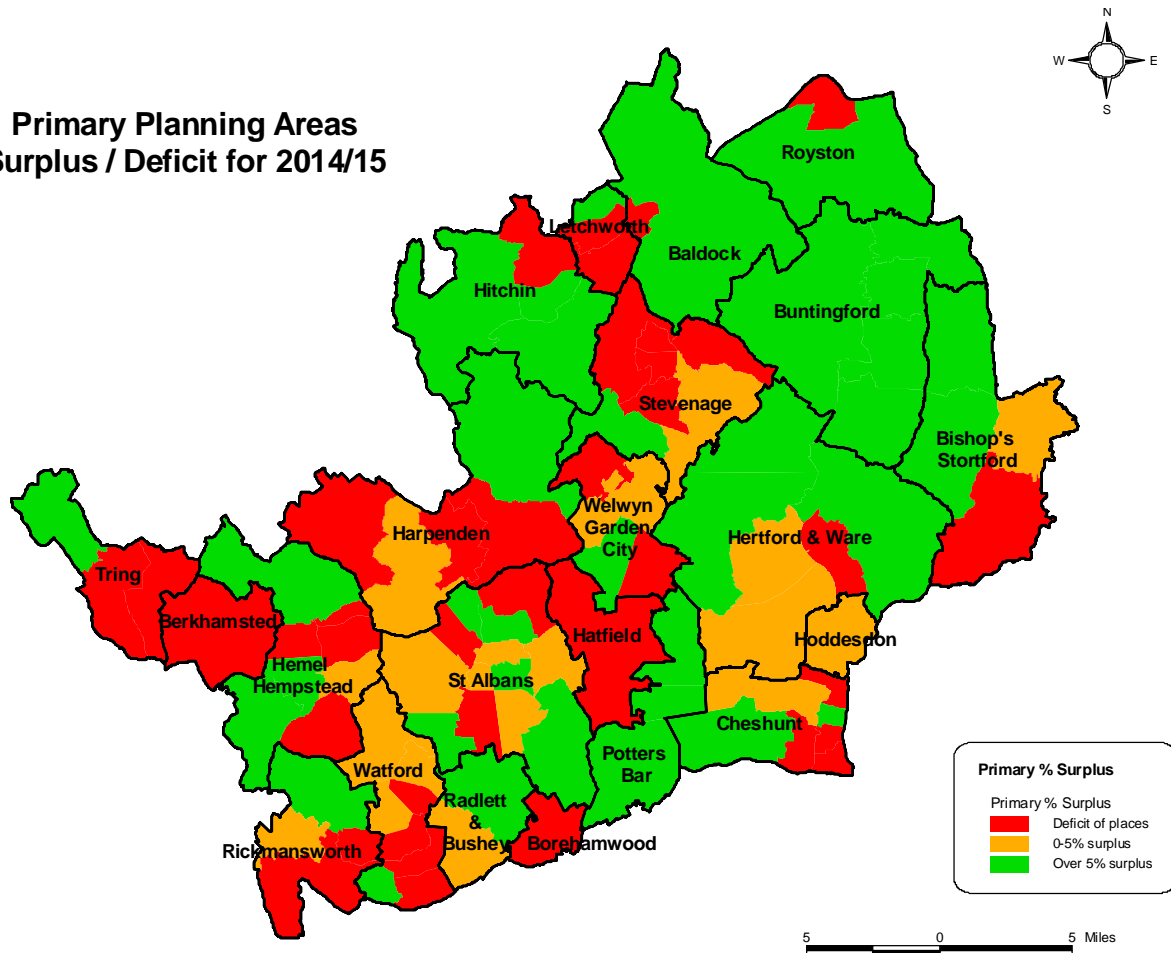


Meeting the Rising Demand for School Places: September 2012 update

PRIMARY PLANNING AREAS

Primary Planning Areas
Surplus / Deficit for 2014/15



More details on the local areas are set out below. The figures are based on the latest forecast of pupil demand.

ABBOTS LANGLEY

21.1

April 2012 Forecast	2012/13	2013/14	2014/15	2015/16
Number of reception places available	240	210	210	210
Demand	223	191	205	226
Supply/Shortage	17	19	5	-16
% Surplus/Shortage	7.1%	9.0%	2.4%	-7.6%
No of FE	0.6	0.6	0.2	-0.5

A deficit of places is forecast in 2015/16 when approximately 0.5 f.e. will be required.

Action taken

2006: reduction of Tanners Wood Primary School's PAN (Published Admission Number) from 56 to 45 to ensure efficient management in line with Key Stage 1 legislation.

2012:

- permanent expansion of Tanners Wood Primary by 0.5 f.e. (15 places) to 2 f.e..
- temporary expansion of Abbots Langley Primary by 1 f.e. (30 places) to cater for a one-year peak in demand.

Next steps

Forecasts will be monitored and appropriate action taken to increase provision at that time.

ANSTEY

6.1.1

April 2012 Forecast	2012/13	2013/14	2014/15	2015/16
Number of reception places available	10	10	10	10
Demand	3	4	4	7
Supply/Shortage	7	6	6	3
% Surplus/Shortage	70.0%	60.0%	60.0%	30.0%
No of FE	0.2	0.2	0.2	0.1

The current forecast indicates there will be sufficient school places to meet demand.

Action Taken

None required to date.

Next Steps

Forecasts will continue to be monitored to ensure there are sufficient places available in the local area to meet need.

BALDOCK TOWN

2.1

April 2012 Forecast	2012/13	2013/14	2014/15	2015/16
Number of reception places available	180	150	150	150
Demand	163	138	159	149
Supply/Shortage	17	12	-9	1
% Surplus/Shortage	9.4%	8.0%	-6.0%	0.7%
No of FE	0.6	0.4	-0.3	0.0

A deficit of 9 places is forecast for Baldock town in 2014/5.

Action Taken

2012: Hartsfield JMI School expanded temporarily to 3f.e. for one year to meet demand for additional Reception places in Baldock and Letchworth.

Next Steps

Forecasts will continue to be monitored to ensure there are sufficient places available in the local area to meet need.

BALDOCK VILLAGES

2.2

April 2012 Forecast	2012/13	2013/14	2014/15	2015/16
Number of reception places available	69	69	69	69
Demand	50	56	48	37
Supply/Shortage	19	13	21	32
% Surplus/Shortage	27.5%	18.8%	30.4%	46.4%
No of FE	0.6	0.4	0.7	1.1

The current forecast indicates that there will be sufficient school places to meet demand.

Action Taken

None required to date.

Next Steps

Forecasts will be monitored to ensure there are sufficient places available in the local area to meet need.

BERKHAMSTED

18.1.1

April 2012 Forecast	2012/13	2013/14	2014/15	2015/16
Number of reception places available	315	252	252	252
Demand	324	321	303	305
Supply/Shortage	-9	-69	-51	-53
% Surplus/Shortage	-2.9%	-27.4%	-20.2%	-21.0%
No of FE	-0.3	-2.3	-1.7	-1.8

The forecast for Berkhamsted continues to indicate a deficit of places, which peaks at 2.3 f.e. (69 places) in 2013/14 and then decreases to around 2 f.e. thereafter.

Action taken

2009: permanent expansion at Greenway First School by 0.5 f.e. to 2 f.e. (15 places).

2011:

- temporary expansion of Westfield First School by 1 f.e. to 2 f.e. (30 places) for one year
- The county council consulted on two proposals to permanently expand Greenway and Westfield First School by 1 f.e. each. These proposals were not agreed following the publication of statutory proposals.
- Cabinet agreed on the 14 October 2011 that a fresh consultation should be undertaken considering alternative options in the town.

2012:

- temporary expansion of Swing Gate First School by 1 f.e. to 2 f.e. (30 places) for one year
- temporary expansion of Greenway First School by 1 f.e. to 3 f.e. (30 places) for one year.
- Temporary expansion of Victoria CoE First School from 42 to 45 reception places.
- These temporary measures provided sufficient reception places for all local children in 2012/13.

Following public consultation on two options to create additional school places in the town, statutory proposals have been published to change from the current three-tier system to a two-tier system of education in the town. This would mean a mix of primary, infant, junior and secondary schools and would create an additional 2.6 f.e. (78 reception places) from September 2013.

Next steps

Forecasts will continue to be monitored to ensure there are sufficient places available in the local area to meet need.

BISHOP'S STORTFORD

7.3

April 2012 Forecast	2012/13	2013/14	2014/15	2015/16
Number of reception places available	480	480	480	480
Demand	438	452	464	453
Supply/Shortage	42	28	16	27
% Surplus/Shortage	8.8%	5.8%	3.3%	5.6%
No of FE	1.4	0.9	0.5	0.9

The current forecast indicates that there will be sufficient school places to meet demand.

Action Taken

None required to date

Next Steps

Forecasts will continue to be monitored to ensure there are sufficient places available in the local area to meet need.

BOREHAMWOOD

16.1

April 2012 Forecast	2012/13	2013/14	2014/15	2015/16
Number of reception places available	420	390	390	390
Demand	393	409	416	416
Supply/Shortage	27	-19	-26	-26
% Surplus/Shortage	6.4%	-4.9%	-6.7%	-6.7%
No of FE	0.9	-0.6	-0.9	-0.9

A deficit of places is forecast from 2013/14 of up to 1 f.e.

Action taken

2009: permanent expansion of Cowley Hill Primary by 0.5 f.e. (15 places) to 2 f.e.

2010: temporary expansion of Summerswood Primary by 1 f.e. (30 places) to 2 f.e.

2011:

- temporary expansion of Summerswood Primary again for 2011-12.
- temporary expansion of Parkside Primary by 1 f.e. (30 places) to 2 f.e.

2012:

- permanent expansion of Summerswood Primary by 1 f.e. (30 places) to 2 f.e.
- continuation of the temporary expansion of Parkside Primary School

Next steps:

- The permanent expansion of Parkside Primary School by 1 f.e. (30 places) to 2 f.e. is proposed from September 2013 to meet forecast need. This is currently subject to public consultation and a final decision is expected in November 2012
- Forecasts will continue to be monitored to ensure there are sufficient places available in the local area to meet need.

BOVINGDON

19.7

April 2012 Forecast	2012/13	2013/14	2014/15	2015/16
Number of reception places available	60	60	60	60
Demand	58	57	40	48
Supply/Shortage	2	3	20	12
% Surplus/Shortage	3.3%	5.0%	33.3%	20.0%
No of FE	0.1	0.1	0.7	0.4

The current forecast indicates that there will be sufficient school places to meet demand.

Action Taken

None required to date.

Next Steps

Forecasts will continue to be monitored to ensure there are sufficient places available in the local area to meet need.

BRAUGHING**6.1.3**

April 2012 Forecast	2012/13	2013/14	2014/15	2015/16
Number of reception places available	21	21	21	21
Demand	14	12	15	11
Supply/Shortage	7	9	6	10
% Surplus/Shortage	33.3%	42.9%	28.6%	47.6%
No of FE	0.2	0.3	0.2	0.3

The current forecast indicates that there will be sufficient school places to meet demand.

Action Taken

None to date

Next Steps

Forecasts will continue to be monitored to ensure there are sufficient places available in the local area to meet need.

BRICKET WOOD**13.7**

April 2012 Forecast	2012/13	2013/14	2014/15	2015/16
Number of reception places available	45	45	45	45
Demand	40	40	35	38
Supply/Shortage	5	5	10	7
% Surplus/Shortage	11.1%	11.1%	22.2%	15.6%
No of FE	0.2	0.2	0.3	0.2

The current forecast indicates that there will be sufficient school places to meet demand.

Action Taken

None required to date.

Next Steps

Forecasts will continue to be monitored to ensure there are sufficient places available in the local area to meet need.

BUNTINGFORD

6.1.2

April 2012 Forecast	2012/13	2013/14	2014/15	2015/16
Number of reception places available	90	90	90	90
Demand	92	75	82	70
Supply/Shortage	-2	15	8	20
% Surplus/Shortage	-2.2%	16.7%	8.9%	22.2%
No of FE	-0.1	0.5	0.3	0.7

A small shortage of places was forecast for 2012/13 only.

Action Taken

None to date. Additional places have not been necessary to meet actual demand for September 2012.

Next Steps

Forecasts will continue to be monitored to ensure there are sufficient places available in the local area to meet need.

BUSHEY

22.2

April 2012 Forecast	2012/13	2013/14	2014/15	2015/16
Number of reception places available	310	310	310	310
Demand	308	317	292	343
Supply/Shortage	2	-7	18	-33
% Surplus/Shortage	0.6%	-2.3%	5.8%	-10.6%
No of FE	0.1	-0.2	0.6	-1.1

A small deficit of places is forecast for 2013/14, and to approximately 1 f.e in 2015/16.

Action taken

2011: temporary expansion of Little Reddings School by 9 places to 2 f.e.

2012: continued temporary expansion of Little Reddings by 9 places to 2 f.e.

Next steps

- Little Reddings to admit 60 pupils on a permanent basis
- Forecasts will continue to be monitored to ensure there are sufficient places available in the local area to meet need.

CHESHUNT WEST

10.5

April 2012 Forecast	2012/13	2013/14	2014/15	2015/16
Number of reception places available	230	230	230	230
Demand	244	223	248	193
Supply/Shortage	-14	7	-18	37
% Surplus/Shortage	-6.1%	3.0%	-7.8%	16.1%
No of FE	-0.5	0.2	-0.6	1.2

A deficit of places is forecast for 2012/13 and 2014/15 of around 0.5f.e..

Action taken

None required to date. No additional reception places were required for September 2012.

Next steps

Forecasts will continue to be monitored and consideration given to how to ensure there are sufficient places available in the local area to meet need.

CHORLEYWOOD

20.2

April 2012 Forecast	2012/13	2013/14	2014/15	2015/16
Number of reception places available	120	120	120	120
Demand	126	133	115	94
Supply/Shortage	-6	-13	5	26
% Surplus/Shortage	-5.0%	-10.8%	4.2%	21.7%
No of FE	-0.2	-0.4	0.2	0.9

A deficit of up to 0.5 f.e. is forecast for 2013/14.

Action taken

2011: Temporary expansion of The Russell by 1 f.e. (30 places) to 2 f.e.

2012: No additional reception places were required.

Next steps

Forecasts will continue to be monitored and consideration given to how to ensure there are sufficient places available in the local area to meet need.

CODICOTE

12.1

April 2012 Forecast	2012/13	2013/14	2014/15	2015/16
Number of reception places available	30	30	30	30
Demand	33	31	37	23
Supply/Shortage	-3	-1	-7	7
% Surplus/Shortage	-10.0%	-3.3%	-23.3%	23.3%
No of FE	-0.1	0.0	-0.2	0.2

A small deficit of places is forecast in the local area to 2015.

Action taken

2012: No additional reception places were required..

Next steps

Note: A current proposal to enlarge the premises of St Michael's Woolmer Green primary (in Welwyn, the planning area adjacent to Codicote) by 10 places to 1 f.e. from 2013/14 will meet forecast need from the wider area.

The impact of this proposal will be monitored along with forecast demand to ensure there are sufficient places available in the local or adjacent area to meet need.

COLNEY HEATH

13.4

April 2012 Forecast	2012/13	2013/14	2014/15	2015/16
Number of reception places available	30	30	30	30
Demand	41	29	29	44
Supply/Shortage	-11	1	1	-14
% Surplus/Shortage	-36.7%	3.3%	3.3%	-46.7%
No of FE	-0.4	0.0	0.0	-0.5

A shortage of places of around 0.5 f.e. is forecast in 2014/15.

Action Taken

None required to date. No additional reception places were required for September 2012.

Next Steps

Forecasts will continue to be monitored to ensure there are sufficient places available in the local area to meet need.

CROXLEY GREEN**20.3**

April 2012 Forecast	2012/13	2013/14	2014/15	2015/16
Number of reception places available	180	150	150	150
Demand	176	141	166	147
Supply/Shortage	4	9	-16	3
% Surplus/Shortage	2.2%	6.0%	-10.7%	2.0%
No of FE	0.1	0.3	-0.5	0.1

A deficit of places is forecast for 2014/15 of approximately 0.5f.e.

Action taken

2011: temporary expansion of Yorke Mead by 1 f.e. (30 places) to 2 f.e.

2012: temporary expansion of Yorke Mead by 1 f.e. (30 places) to 2 f.e.

Next steps

Forecasts will continue to be monitored consideration given to how to ensure there are sufficient places available in the local area to meet need.

ESSENDON**15.1**

April 2012 Forecast	2012/13	2013/14	2014/15	2015/16
Number of reception places available	15	15	15	15
Demand	14	18	12	14
Supply/Shortage	1	-3	3	1
% Surplus/Shortage	6.7%	-20.0%	20.0%	6.7%
No of FE	0.0	-0.1	0.1	0.0

A deficit of three places is forecast in 2013/14.

Action taken

None required to date

Next steps

Forecasts will continue to be monitored to ensure there are sufficient places available in the local area to meet need. Should additional places be required agreements will be sought with local schools to meet the demand.

FLAMSTEAD END RIDGEWAY EAST
10.7

April 2012 Forecast	2012/13	2013/14	2014/15	2015/16
Number of reception places available	102	102	102	102
Demand	122	90	100	108
Supply/Shortage	-20	12	2	-6
% Surplus/Shortage	-19.6%	11.8%	2.0%	-5.9%
No of FE	-0.7	0.4	0.1	-0.2

A deficit of 20 places was forecast for 2012/13 and a smaller deficit of 6 places is forecast in 2015/16.

Action taken

None required to date. Additional places were not necessary to meet the actual demand for places in 2012.

Next steps

Forecasts will continue to be monitored to ensure there are sufficient places available in the local area to meet need.

GADDESDENS
19.8

April 2012 Forecast	2012/13	2013/14	2014/15	2015/16
Number of reception places available	37	37	37	37
Demand	39	30	22	33
Supply/Shortage	-2	7	15	4
% Surplus/Shortage	-5.4%	18.9%	40.5%	10.8%
No of FE	-0.1	0.2	0.5	0.1

As forecast for 2012/13 but there will be sufficient school places to meet demand in future years

Action Taken

None required to date: additional places were not necessary to meet the level of demand in 2012.

Next Steps

Forecasts will continue to be monitored to ensure there are sufficient places available in the local area to meet need.

GOFFS OAK RIDGEWAY SOUTH
10.6

April 2012 Forecast	2012/13	2013/14	2014/15	2015/16
Number of reception places available	135	135	135	135
Demand	126	123	115	111
Supply/Shortage	9	12	20	24
% Surplus/Shortage	6.7%	8.9%	14.8%	17.8%
No of FE	0.3	0.4	0.7	0.8

The current forecast indicates that there will be sufficient school places to meet demand.

Action Taken

None required to date

Next Steps

Forecasts will continue to be monitored to ensure there are sufficient places available in the local area to meet need.

HADHAMS
7.2

April 2012 Forecast	2012/13	2013/14	2014/15	2015/16
Number of reception places available	50	50	50	50
Demand	42	42	40	31
Supply/Shortage	8	8	10	19
% Surplus/Shortage	16.0%	16.0%	20.0%	38.0%
No of FE	0.3	0.3	0.3	0.6

The current forecast indicates that there will be sufficient school places to meet demand.

Action Taken

None required to date

Next Steps

Forecasts will continue to be monitored to ensure there are sufficient places available in the local area to meet need.

HARPENDEN

11.2

April 2012 Forecast	2012/13	2013/14	2014/15	2015/16
Number of reception places available	517	412	412	412
Demand	468	433	421	384
Supply/Shortage	49	-21	-9	28
% Surplus/Shortage	9.5%	-5.1%	-2.2%	6.8%
No of FE	1.6	-0.7	-0.3	0.9

The forecast indicates a deficit of 0.7 f.e will be required in 2013/14 with this shortfall decreasing to 0.3 f.e. in 2014/15 and then a surplus forecast from 2015/16. However, experience over the recent years indicates that late pupil inflow into the town, particularly at the age of 3 and 4, may result in a higher level of demand for places than forecast.

Action taken

2010: temporary expansion of The Grove Infant by 0.5 f.e. to 3 f.e.
(15 places)

2011:

- temporary expansion of The Lea by 1 f.e. (30 places) to 2 f.e.
- continued temporary expansion The Grove by 0.5 f.e. (15 places)
- temporary expansion of St Dominic's by 1 f.e.

2012:

- continuation of temporary expansions at St Dominic and The Grove Infant School
- temporary expansion of Manland by 1 f.e. (30 places) to 2 f.e
- temporary expansion of Wood End by 1 f.e. (30 places) to 3 f.e
- DfE conditionally approved The Harpenden Free School, a 2 f.e. primary school with a Montessori ethos, from September 2012. Pending final approval from the DfE, the school is set to open in temporary accommodation initially, with a move to permanent accommodation planned by September 2014. This will increase the places available in the area.

Next steps

- The permanent expansion of both The Grove Infants and The Grove Junior schools by 0.5 f.e. (15 places) is proposed from September 2013. This is currently subject to public consultation and a final decision is expected in November 2012.

- Forecasts will continue to be monitored to ensure there are sufficient places available in the local area to meet need.

HATFIELD

14.1

April 2012 Forecast	2012/13	2013/14	2014/15	2015/16
Number of reception places available	495	465	465	465
Demand	486	451	475	452
Supply/Shortage	9	14	-10	13
% Surplus/Shortage	1.8%	3.0%	-2.2%	2.8%
No of FE	0.3	0.5	-0.3	0.4

A deficit of 10 places is forecast in 2014/15.

Action taken

2006: Review of surplus places undertaken.

2007: Implementation of review outcomes included:

- amalgamation of Stream Woods and New Briars Primary Schools to create new f.e. Oak View Primary School on the former Stream Woods site.

2010: Action included:

- permanent expansion of Green Lanes Primary's by 0.5 f.e. to 2 f.e.
- temporary expansion of Oak View Primary by 1 f.e. to 2 f.e.

2011: Permanent expansion of Oak View Primary by 1 f.e. to 2 f.e.

2012: Action included:

- temporary expansion of De Havilland Primary by 1 f.e. to 3 f.e.
- a new 2F.E. Hatfield Community Free School has been approved by the DfE for the former New Briars site from 2012.

Next steps

Forecast monitored to ensure there are sufficient places available in the local area to meet need. Contingency plans will be sought locally for any temporary increases in places that may be required to meet forecast peak demand in 2014/15.

HEMEL HEMPSTEAD EAST

19.2, 19.3 & 19.4

April 2012 Forecast	2012/13	2013/14	2014/15	2015/16
Number of reception places available	795	795	795	795
Demand	787	808	827	867
Supply/Shortage	8	-13	-32	-72
% Surplus/Shortage	1.0%	-1.6%	-4.0%	-9.1%
No of FE	0.3	-0.4	-1.1	-2.4

Pupil numbers have increased rapidly in the east of Hemel Hempstead. There will be a shortage of a minimum of 0.5 f.e. of places from 2013/14, rising to around 2.5 f.e. by the end of the forecast period.

Action taken

2006: review of primary places undertaken

2008: implementation of review outcomes in this part of the town;

- the amalgamation of schools (Barncroft /Eastbrook; Jupiter Drive/ Bellgate) to create Maple Grove (1 f.e.) on the former Eastbrook site and Yewtree (2 f.e.) on the former Bellgate site.

2011: to respond to a change in demand:

- permanent expansion of Tudor Primary by 1 f.e. to 2 f.e.
- permanent expansion of Hammond Primary by 1 f.e. to 2 f.e.

Next steps

- The County Council will work with schools to provide places as locally as possible to ensure the appropriate number of places is provided to meet demand in 2013/14.
- The Hertfordshire Community Free School Company is developing a proposal to bid for a new 2 f.e. (60 places) free school in the area of greatest demand from 2014/15.
- Forecasts will continue to be monitored to ensure there are sufficient places available in the local area to meet need.

HEMEL HEMPSTEAD NORTH WEST**19.1**

April 2012 Forecast	2012/13	2013/14	2014/15	2015/16
Number of reception places available	105	105	105	105
Demand	108	112	113	114
Supply/Shortage	-3	-7	-8	-9
% Surplus/Shortage	-2.9%	-6.7%	-7.6%	-8.6%
No of FE	-0.1	-0.2	-0.3	-0.3

A small but increasing deficit of places is forecast from 2012 to around 0.5 f.e.

Action taken

2006: review of surplus primary places undertaken.

2008: implementation of review outcomes: amalgamation of Rossgate/Martindale to create Galley Hill (1.5 f.e.) on the former Rossgate site.

Next steps

Forecasts will continue to be monitored to ensure there are sufficient places available in the local area to meet need.

HEMEL HEMPSTEAD WEST**19.5**

April 2012 Forecast	2012/13	2013/14	2014/15	2015/16
Number of reception places available	200	200	200	200
Demand	203	217	188	214
Supply/Shortage	-3	-17	12	-14
% Surplus/Shortage	-1.5%	-8.5%	6.0%	-7.0%
No of FE	-0.1	-0.6	0.4	-0.5

A deficit of places is forecast for 2013/14 and again in 2015/16.

Action taken

None required to date. No additional places were necessary to meet demand in 2012.

Next steps

Forecasts will continue to be monitored to ensure there are sufficient places available in the local area to meet need.

HEMEL RURAL NORTH

11.5

April 2012 Forecast	2012/13	2013/14	2014/15	2015/16
Number of reception places available	45	45	45	45
Demand	44	53	46	57
Supply/Shortage	1	-8	-1	-12
% Surplus/Shortage	2.2%	-17.8%	-2.2%	-26.7%
No of FE	0.0	-0.3	0.0	-0.4

A deficit of places is forecast from 2013/14 reaching 0.4 f.e. in 2015/16

Action taken

None required to date.

Next steps

Forecasts will continue to be monitored to ensure there are sufficient places available in the local area to meet need.

HEMEL HEMPSTEAD RURAL SOUTH

19.6

April 2012 Forecast	2012/13	2013/14	2014/15	2015/16
Number of reception places available	90	90	90	90
Demand	97	96	102	66
Supply/Shortage	-7	-6	-12	24
% Surplus/Shortage	-7.8%	-6.7%	-13.3%	26.7%
No of FE	-0.2	-0.2	-0.4	0.8

A deficit of places is forecast in 2013/14 and 2014/15 which peaks at just over 0.5 f.e.

Action taken

None required to date. No additional reception places were required for September 2012.

Next steps

Forecasts will continue to be monitored to ensure there are sufficient places available in the local area to meet need.

HERTFORD

8.5

April 2012 Forecast	2012/13	2013/14	2014/15	2015/16
Number of reception places available	375	315	315	315
Demand	351	318	314	356
Supply/Shortage	24	-3	1	-41
% Surplus/Shortage	6.4%	-1.0%	0.3%	-13.0%
No of FE	0.8	-0.1	0.0	-1.4

A small deficit of places is forecast for Hertford town in 2013/14 with the need for an additional 1.5 f.e. in 2015/16.

Action taken

2009: Consultation of the permanent expansion of Wheatcroft Primary School by 0.5 f.e. to 2 f.e. which proved to be unviable.

2011: Consultation on the permanent expansion of Abel Smith Primary for 2012/13 by 1 f.e. to 2 f.e., which proved to be unviable.

2012: Temporary expansion of Bengo Primary School by 1f.e. to meet peak demand.

Next steps

The County Council's proposed strategy for Hertford is to await information on the location and level of new house building once EHDC's core strategy is adopted to inform feasibility work for permanent primary provision. Further information from the District Council on the level of new housing growth in the town is expected by the end of the summer of 2012.

Pending permanent proposals, the County Council will work with local schools to agree contingency plans to ensure sufficient places are made available to meet need in the town.

HERTFORD SOUTH VILLAGES

8.4

April 2012 Forecast	2012/13	2013/14	2014/15	2015/16
Number of reception places available	45	45	45	45
Demand	37	38	43	34
Supply/Shortage	8	7	2	11
% Surplus/Shortage	17.8%	15.6%	4.4%	24.4%
No of FE	0.3	0.2	0.1	0.4

The current forecast indicates that there will be sufficient school places to meet demand.

Action Taken

None required to date.

Next Steps

Forecasts will continue to be monitored to ensure there are sufficient places available in the local area to meet need.

HITCHIN TOWN

4.2 & 4.3

April 2012 Forecast	2012/13	2013/14	2014/15	2015/16
Number of reception places available	458	428	428	428
Demand	439	457	459	436
Supply/Shortage	19	-29	-31	-8
% Surplus/Shortage	4.1%	-6.8%	-7.2%	-1.9%
No of FE	0.6	-1.0	-1.0	-0.3

A deficit of approximately 1 f.e. of reception places is forecast from 2013/14.

Action taken

2007: review of surplus primary places undertaken.

2009: implementation of review outcomes:

- Strathmore Infant's PAN reduced from 90 to 60
- Highover JMI's PAN reduced from 42 to 30.

2011:

- Mary Exton's PAN reduced from 34 to 30.
- Samuel Lucas's PAN reduced from 34 to 30.
- Temporary expansion of Highover JMI by 0.5 f.e. (15 places) to 1.5 f.e. (45 places) and subsequent local agreement to admit up to 27 additional pupils
- Temporary expansion of Strathmore Infant by 1 f.e. to 3 f.e.

2012:

- Permanent expansion of Highover JMI by 1 f.e. to 2 f.e.
- Temporary expansion of Oughton Primary School by 1 f.e. to 2 f.e.

Next steps

The local authority is consulting upon the potential enlargement of the premises of Samuel Lucas JMI School to enable the school to expand permanently by 1 f.e. to 2 f.e. from 2013/14.

Forecasts will continue to be monitored to ensure there are sufficient places available in the local area to meet need.

HITCHIN VILLAGES SOUTH

4.4

April 2012 Forecast	2012/13	2013/14	2014/15	2015/16
Number of reception places available	50	50	50	50
Demand	37	54	47	46
Supply/Shortage	13	-4	3	4
% Surplus/Shortage	26.0%	-8.0%	6.0%	8.0%
No of FE	0.4	-0.1	0.1	0.1

A small deficit of places is forecast for 2013/14.

Action taken

None required.

Next steps

Forecasts will continue to be monitored to ensure there are sufficient places available in the local area to meet need.

HITCHIN WEST

4.1

April 2012 Forecast	2012/13	2013/14	2014/15	2015/16
Number of reception places available	65	65	65	65
Demand	62	49	58	41
Supply/Shortage	3	16	7	24
% Surplus/Shortage	4.6%	24.6%	10.8%	36.9%
No of FE	0.1	0.5	0.2	0.8

The current forecast indicates that there will be sufficient school places to meet demand.

Action Taken

None required to date.

Next Steps

Forecasts will continue to be monitored to ensure there are sufficient places available in the local area to meet need.

HODDESDON

9.1

April 2012 Forecast	2012/13	2013/14	2014/15	2015/16
Number of reception places available	465	435	435	435
Demand	455	435	430	414
Supply/Shortage	10	0	5	21
% Surplus/Shortage	2.2%	0.0%	1.1%	4.8%
No of FE	0.3	0.0	0.2	0.7

There is a close match between the level of forecast demand and the number of reception places available.

Action taken

2006: Surplus place review undertaken.

2007: Implementation of review outcomes:

- closure of Ryelands & Ley Park Primary Schools
- relocation of Wormley Primary and expansion by 1 f.e. to 2 f.e.
- expansion of Sheredes Primary by 0.5 f.e. to 2 f.e.

2012: Additional 30 reception places provided by local agreement following receipt of primary applications at The Cranbourne Primary to ensure every child who made an application was able to access a local school place.

Next steps

Forecasts will be monitored closely to ensure sufficient places are available to meet local need. The County Council will work with the local group of schools to agree contingency arrangements to ensure additional places are made available in future if required.

HORMEAD

6.1.5

April 2012 Forecast	2012/13	2013/14	2014/15	2015/16
Number of reception places available	20	20	20	20
Demand	6	9	6	6
Supply/Shortage	14	11	14	14
% Surplus/Shortage	70.0%	55.0%	70.0%	70.0%
No of FE	0.5	0.4	0.5	0.5

The current forecast indicates that there will be sufficient school places to meet demand.

Action Taken

None required to date

Next Steps

Forecasts will continue to be monitored to ensure there are sufficient places available in the local area to meet need.

KNEBWORTH

5.6

April 2012 Forecast	2012/13	2013/14	2014/15	2015/16
Number of reception places available	60	60	60	60
Demand	56	78	56	72
Supply/Shortage	4	-18	4	-12
% Surplus/Shortage	6.7%	-30.0%	6.7%	-20.0%
No of FE	0.1	-0.6	0.1	-0.4

A deficit of around 0.5 f.e. is forecast in 2013/14, and again in 2015/16.

Action Taken

None required to date.

Next steps

Knebworth is served by a 2 f.e primary school. Physical site constraints mean the school is not capable of expansion on its current site.

A current proposal to enlarge the premises of St Michael's Woolmer Green primary school (in Welwyn, the planning area adjacent to Knebworth) by 10 places to 1f.e. from 2013/14 will meet the forecast need from the wider area.

The impact of this proposal will be monitored along with forecast demand to ensure there are sufficient places available locally to meet need.

LETCHWORTH

1.0

April 2012 Forecast	2012/13	2013/14	2014/15	2015/16
Number of reception places available	371	372	372	372
Demand	382	410	374	400
Supply/Shortage	-11	-38	-2	-28
% Surplus/Shortage	-3.0%	-10.2%	-0.5%	-7.5%
No of FE	-0.4	-1.3	-0.1	-0.9

A shortage of places is forecast from 2012/13 onwards, peaking in 2013/14 when a shortage of up to 1.5 f.e. may be expected.

Action taken

2006/7: review of surplus primary places undertaken.

2009: implementation of review outcomes:

- Westbury and Lannock Primary Schools were closed (a reduction of 64 places).
- Radburn Primary's PAN was reduced from 38 to 30.

2012: Hartsfield JMI School will temporarily expand to 3f.e. in 2012/13 for one year to meet demand for additional Reception places in Baldock and Letchworth.

Next steps

- The local authority is consulting upon the potential enlargement of the premises of Icknield Infant School, Wilbury Junior School by 0.3 f.e. to 3 f.e. and Lordship Farm School from 2013/14 by 0.3 f.e. to 2 f.e. (providing 18 additional places).
- Forecasts will continue to be monitored and consideration given to how to ensure there are sufficient places available in the local area to meet need. An additional temporary 1 f.e. expansion currently is expected to be required in Letchworth in 2013/14 to meet demand.

LONDON COLNEY

13.13

April 2012 Forecast	2012/13	2013/14	2014/15	2015/16
Number of reception places available	120	120	120	120
Demand	109	117	116	134
Supply/Shortage	11	3	4	-14
% Surplus/Shortage	9.2%	2.5%	3.3%	-11.7%
No of FE	0.4	0.1	0.1	-0.5

A shortage of approximately of 0.5 f.e.(15 places) is forecast for 2015/16

Action taken

None required to date.

Next steps

September 2012: Note: Additional primary provision at the proposed Samuel Ryder Academy (in the adjacent planning area in St Albans) will provide additional reception places close to London Colney. . Forecasts will continue

to be monitored to ensure the appropriate number of places to meet future demand.

MOOR PARK

21.7

April 2012 Forecast	2012/13	2013/14	2014/15	2015/16
Number of reception places available	45	45	45	45
Demand	31	41	35	34
Supply/Shortage	14	4	10	11
% Surplus/Shortage	31.1%	8.9%	22.2%	24.4%
No of FE	0.5	0.1	0.3	0.4

The current forecast indicates that there will be sufficient school places to meet demand.

Action Taken

None required to date.

Next Steps

Forecasts will continue to be monitored to ensure there are sufficient places available in the local area to meet need.

OXHEY NORTH

21.8

April 2012 Forecast	2012/13	2013/14	2014/15	2015/16
Number of reception places available	100	100	100	100
Demand	99	102	101	100
Supply/Shortage	1	-2	-1	0
% Surplus/Shortage	1.0%	-2.0%	-1.0%	0.0%
No of FE	0.0	-0.1	0.0	0.0

The supply and demand for places is very closely matched and there is a small shortage of places forecast for 2013/14 and 2014/15

Action taken

None required to date

Next steps

Forecasts will continue to be monitored to ensure there are sufficient places available in the local area to meet need.

OXHEY SOUTH

21.6

April 2012 Forecast	2012/13	2013/14	2014/15	2015/16
Number of reception places available	201	201	201	201
Demand	196	203	206	210
Supply/Shortage	5	-2	-5	-9
% Surplus/Shortage	2.5%	-1.0%	-2.5%	-4.5%
No of FE	0.2	-0.1	-0.2	-0.3

A small shortage of places is forecast.

Action taken

2011: An additional 9 places were made available at Oxhey Wood Primary school

2012: An additional 9 places were made available at Oxhey Wood Primary school

Next steps

Forecasts will continue to be monitored and consideration given to how to ensure there are sufficient places available in the local area to meet need.

PARK STREET

13.11

April 2012 Forecast	2012/13	2013/14	2014/15	2015/16
Number of reception places available	60	60	60	60
Demand	57	55	63	61
Supply/Shortage	3	5	-3	-1
% Surplus/Shortage	5.0%	8.3%	-5.0%	-1.7%
No of FE	0.1	0.2	-0.1	0.0

A small shortage of places is forecast from 2014/15.

Action taken

None required to date

Next steps

Forecasts will continue to be monitored to ensure there are sufficient places available in the local area to meet need.

PELHAMS

7.1

April 2012 Forecast	2012/13	2013/14	2014/15	2015/16
Number of reception places available	30	30	30	30
Demand	18	22	22	11
Supply/Shortage	12	8	8	19
% Surplus/Shortage	40.0%	26.7%	26.7%	63.3%
No of FE	0.4	0.3	0.3	0.6

The current forecast indicates that there will be sufficient school places to meet demand.

Action Taken

None required to date

Next Steps

Forecasts will continue to be monitored to ensure there are sufficient places available in the local area to meet need.

POTTERS BAR

15.2

April 2012 Forecast	2012/13	2013/14	2014/15	2015/16
Number of reception places available	255	255	255	255
Demand	257	213	220	207
Supply/Shortage	-2	42	35	48
% Surplus/Shortage	-0.8%	16.5%	13.7%	18.8%
No of FE	-0.1	1.4	1.2	1.6

The current forecast predicts that there will be sufficient school places to meet demand.

Action Taken

No additional places were required in 2012.

Next Steps

Forecasts will continue to be monitored to ensure there are sufficient places available in the local area to meet need.

PUCKERIDGE**6.1.4**

April 2012 Forecast	2012/13	2013/14	2014/15	2015/16
Number of reception places available	75	75	75	75
Demand	56	71	55	59
Supply/Shortage	19	4	20	16
% Surplus/Shortage	25.3%	5.3%	26.7%	21.3%
No of FE	0.6	0.1	0.7	0.5

The current forecast indicates that there will be sufficient school places to meet demand.

Action taken

None required to date

Next steps

Forecasts will continue to be monitored to ensure there are sufficient places available in the local area to meet need.

RADLETT**22.1**

April 2012 Forecast	2012/13	2013/14	2014/15	2015/16
Number of reception places available	150	150	150	150
Demand	156	152	136	132
Supply/Shortage	-6	-2	14	18
% Surplus/Shortage	-4.0%	-1.3%	9.3%	12.0%
No of FE	-0.2	-0.1	0.5	0.6

A small deficit of places is forecast for 2012/13 and 2013/14.

Action taken

None required to date.

Next steps

Forecasts will continue to be monitored to ensure there are sufficient places available in the local area to meet need.

REDBOURN

11.1

April 2012 Forecast	2012/13	2013/14	2014/15	2015/16
Number of reception places available	90	60	60	60
Demand	75	67	57	57
Supply/Shortage	15	-7	3	3
% Surplus/Shortage	16.7%	-11.7%	5.0%	5.0%
No of FE	0.5	-0.2	0.1	0.1

A small shortage is forecast in 2013/14.

Action Taken

2012: temporary increase of Redbourn Infant School by 1 f.e.

Next Steps

Forecasts will continue to be monitored to ensure there are sufficient places available in the local area to meet need.

RICKMANSWORTH

20.4

April 2012 Forecast	2012/13	2013/14	2014/15	2015/16
Number of reception places available	180	180	180	180
Demand	173	196	195	198
Supply/Shortage	7	-16	-15	-18
% Surplus/Shortage	3.9%	-8.9%	-8.3%	-10.0%
No of FE	0.2	-0.5	-0.5	-0.6

A deficit of places is forecast of between 0.5 to 1 f.e. from 2013/14.

Action taken

2011: temporary expansion of Shepherd Primary by 10 places

Next steps

- The permanent expansion of Shepherd Primary School by 1 f.e. (30 places) to 2 f.e. is proposed from September 2013. This is currently subject to public consultation and a final decision is expected in November 2012
- Forecasts will continue to be monitored to ensure there are sufficient places available in the local area to meet need.

RIDGEWAY WEST**15.3**

April 2012 Forecast	2012/13	2013/14	2014/15	2015/16
Number of reception places available	45	45	45	45
Demand	44	32	32	40
Supply/Shortage	1	13	13	5
% Surplus/Shortage	2.2%	28.9%	28.9%	11.1%
No of FE	0.0	0.4	0.4	0.2

The current forecast indicates that there will be sufficient school places to meet demand.

Action Taken

None to date

Next Steps

Forecasts will continue to be monitored to ensure there are sufficient places available in the local area to meet need.

ROYSTON TOWN**3.1.1**

April 2012 Forecast	2012/13	2013/14	2014/15	2015/16
Number of reception places available	210	210	210	210
Demand	176	201	212	196
Supply/Shortage	34	9	-2	14
% Surplus/Shortage	16.2%	4.3%	-1.0%	6.7%
No of FE	1.1	0.3	-0.1	0.5

A small shortage of Reception places (2) is forecast for 2014/15.

Action taken

None to date

Next steps

Forecasts will continue to be monitored to ensure there are sufficient places available in the local area to meet need.

ROYSTON VILLAGES

3.1.2

April 2012 Forecast	2012/13	2013/14	2014/15	2015/16
Number of reception places available	50	50	50	50
Demand	37	33	32	43
Supply/Shortage	13	17	18	7
% Surplus/Shortage	26.0%	34.0%	36.0%	14.0%
No of FE	0.4	0.6	0.6	0.2

The current forecast indicates that there will be sufficient school places to meet demand.

Action Taken

None required to date.

Next Steps

Forecasts will continue to be monitored to ensure there are sufficient places available in the local area to meet need.

SANDRIDGE

13.5

April 2012 Forecast	2012/13	2013/14	2014/15	2015/16
Number of reception places available	21	21	21	21
Demand	18	24	22	21
Supply/Shortage	3	-3	-1	0
% Surplus/Shortage	14.3%	-14.3%	-4.8%	0.0%
No of FE	0.1	-0.1	0.0	0.0

A small shortage of places forecast for 2013/14 and 2014/15.

Action taken

None to date

Next steps

The current proposal to enlarge the premises of Sandridge Primary School will enable this school to increase the number of reception places by 9 to 1f.e. from 2013/14 to meet forecast need from the local area.

The impact of these proposals will be monitored along with forecast demand to ensure there are sufficient places available in the local area to meet need.

SARRATT

20.1

April 2012 Forecast	2012/13	2013/14	2014/15	2015/16
Number of reception places available	26	26	26	26
Demand	28	22	24	12
Supply/Shortage	-2	4	2	14
% Surplus/Shortage	-7.7%	15.4%	7.7%	53.8%
No of FE	-0.1	0.1	0.1	0.5

A small shortage of places was forecast for 2012/13 only.

Action taken

2010: The PAN at Sarratt Primary School increased from 25 to 26

2012: No additional places were required to meet actual demand in 2012/13

Next steps

Forecasts will continue to be monitored to ensure there are sufficient places available in the local area to meet need.

SAWBRIDGEWORTH

7.4

April 2012 Forecast	2012/13	2013/14	2014/15	2015/16
Number of reception places available	135	135	135	135
Demand	153	140	145	142
Supply/Shortage	-18	-5	-10	-7
% Surplus/Shortage	-13.3%	-3.7%	-7.4%	-5.2%
No of FE	-0.6	-0.2	-0.3	-0.2

A shortage of up to 0.5 f.e. is forecast.

Action Taken

None required to date as the level of actual applications for a reception place in the area for September 2012 confirmed sufficient places available to meet demand.

Next Steps

Feasibility work is required to confirm the level of additional capacity required and options for meeting future forecast need.

SHENLEY

13.14

April 2012 Forecast	2012/13	2013/14	2014/15	2015/16
Number of reception places available	75	75	75	75
Demand	71	63	50	63
Supply/Shortage	4	12	25	12
% Surplus/Shortage	5.3%	16.0%	33.3%	16.0%
No of FE	0.1	0.4	0.8	0.4

The current forecast indicates that there will be sufficient school places to meet demand.

Action Taken

None required to date.

Next Steps

Forecasts will continue to be monitored to ensure there are sufficient places available in the local area to meet need.

ST ALBANS

13.1, 13.2, 13.3, 13.6, 13.8, 13.9 & 13.12

April 2012 Forecast	2012/13	2013/14	2014/15	2015/16
Number of reception places available	1147	1117	1117	1117
Demand	1106	1061	1022	999
Supply/Shortage	41	56	95	118
% Surplus/Shortage	3.6%	5.0%	8.5%	10.6%
No of FE	1.4	1.9	3.2	3.9

The current forecast indicates that there will be sufficient school places to meet demand and provide some flexibility for adjacent areas with forecast pressure for places (i.e. London Colney, Park Street, Colney Heath)

Action taken:

2007:

Temporary expansion by 1 f.e.of:

- Aboyne Lodge Primary to 2 f.e.
- Maple Primary to 2 f.e.
- St Peter's Primary to 2 f.e.

2008:

Permanent expansion by 1 f.e. of:

- Mandeville Primary to 2 f.e.
- Bernards Heath Infant to 3 f.e.

2009:

Temporary expansion by 1 f.e. of Margaret Wix Primary to 2 f.e.

2010:

Temporary expansion by 1 f.e. of:

- Margaret Wix Primary to 2 f.e.
- Cunningham Hill Infant to 3 f.e.
- Killigrew Primary to 3 f.e.

2011:

- Temporary expansion of Prae Wood Primary by 1 f.e. to 2 f.e.
- Permanent expansion of Bernards Heath Junior by 1 f.e. to 3 f.e.

2012:

- Continued temporary expansion of Prae Wood Primary from 1 to 2 f.e.
- Establishment of Alban City School – a 2 f.e. Free School in the Coty Centre
- Establishment of Samuel Ryder Academy - providing a 2 f.e. primary element as part of an all-through school.

Next steps:

- Temporary expansion of Cunningham Hill Junior School from 2 to 3 f.e. from 2013/14
- Forecasts will continue to be monitored to ensure there are sufficient places available in the local area to meet need.

STEVENAGE TOWN (NORTH)

5.1 & 5.7

April 2012 Forecast	2012/13	2013/14	2014/15	2015/16
Number of reception places available	705	706	706	706
Demand	699	669	752	777
Supply/Shortage	6	37	-46	-71
% Surplus/Shortage	0.9%	5.2%	-6.5%	-10.1%
No of FE	0.2	1.2	-1.5	-2.4

A shortage of places is forecast from 2014/15 onwards to peak in 2015/16 when 2.5 f.e. of additional places are required.

Action taken

2003: relocation of Round Diamond Primary to the heart of the Great Ashby development and expansion of the school by 1 f.e. to 2 f.e.

2008: Increase in the PAN at The Leys Primary school from 60 to 73

2010: Increase in the PAN at The Leys Primary school from 73 to 75

2011: temporary expansion of Martins Wood Primary by 1 f.e. to 3 f.e.

2012:

- permanent expansion of Fairlands Primary by 1 f.e. to 3 f.e.
- permanent expansion of Martins Wood Primary by 1 f.e. to 3 f.e.

Next steps

Feasibility work is underway to identify options for an additional 3 f.e. additional permanent reception places to meet anticipated demand for places in this area of Stevenage and in Stevenage North East B.

STEVENAGE NORTH EAST B

5.2

April 2012 Forecast	2012/13	2013/14	2014/15	2015/16
Number of reception places available	165	165	165	165
Demand	156	166	181	182
Supply/Shortage	9	-1	-16	-17
% Surplus/Shortage	5.5%	-0.6%	-9.7%	-10.3%
No of FE	0.3	0.0	-0.5	-0.6

A shortage of places of approximately 0.5 f.e. is forecast from 2013/14 onwards.

Action taken

None required to date.

Next steps

Feasibility work is underway to identify options for an additional 3 f.e. additional permanent reception places to meet anticipated demand for places in this area of Stevenage and in Stevenage North.

STEVENAGE NORTH EAST VILLAGES

5.3

April 2012 Forecast	2012/13	2013/14	2014/15	2015/16
Number of reception places available	15	15	15	15
Demand	27	21	19	22
Supply/Shortage	-12	-6	-4	-7
% Surplus/Shortage	-80.0%	-40.0%	-26.7%	-46.7%
No of FE	-0.4	-0.2	-0.1	-0.2

This school planning area only contains one school – Walkern Primary School. The current forecast indicates a small shortage of places from 2012/13 onwards.

Action taken

Local agreements have been made with the school to admit more pupils in individual years, including 2012/13.

Next Steps

The County Council will review the feasibility of permanently expanding the school to provide additional Reception places to meet forecast need.

STEVENAGE SOUTH EAST

5.4

April 2012 Forecast	2012/13	2013/14	2014/15	2015/16
Number of reception places available	330	330	330	330
Demand	328	315	357	334
Supply/Shortage	2	15	-27	-4
% Surplus/Shortage	0.6%	4.5%	-8.2%	-1.2%
No of FE	0.1	0.5	-0.9	-0.1

A shortage of up to 1f.e or up to 30 places is forecast for 2014/15 reducing in 2015/16.

Action taken

None required to date.

Next Steps

Options for a temporary expansion to be considered to meet forecast demand in 2014/15.

STEVENAGE SOUTH EAST VILLAGES

5.5

April 2012 Forecast	2012/13	2013/14	2014/15	2015/16
Number of reception places available	61	64	64	64
Demand	77	39	63	46
Supply/Shortage	-16	25	1	18
% Surplus/Shortage	-26.2%	39.1%	1.6%	28.1%
No of FE	-0.5	0.8	0.0	0.6

A shortage of approximately 0.5 f.e. was forecast for 2012/13

Action taken

No additional places were required for September 2012.

Next Steps

Forecasts will continue to be monitored to ensure there are sufficient places available in the local area to meet need.

THE WALDENS

11.4

April 2012 Forecast	2012/13	2013/14	2014/15	2015/16
Number of reception places available	62	62	62	62
Demand	48	40	55	32
Supply/Shortage	14	22	7	30
% Surplus/Shortage	22.6%	35.5%	11.3%	48.4%
No of FE	0.5	0.7	0.2	1.0

The current forecast indicates that there will be sufficient school places to meet demand.

Action Taken

None required to date.

Next Steps

Forecasts will continue to be monitored to ensure there are sufficient places available in the local area to meet need.

TRING

17.1, 17.2 & 17.3

April 2012 Forecast	2012/13	2013/14	2014/15	2015/16
Number of reception places available	200	200	200	200
Demand	183	194	203	174
Supply/Shortage	17	6	-3	26
% Surplus/Shortage	8.5%	3.0%	-1.5%	13.0%
No of FE	0.6	0.2	-0.1	0.9

A small shortage of places is forecast for 2014/15.

Action taken

None required to date

Next steps

Forecasts will continue to be monitored to ensure there are sufficient places available in the local area to meet need.

Turnford North & South

10.1 & 10.2

April 2012 Forecast	2012/13	2013/14	2014/15	2015/16
Number of reception places available	165	165	165	165
Demand	126	128	147	160
Supply/Shortage	39	37	18	5
% Surplus/Shortage	23.6%	22.4%	10.9%	3.0%
No of FE	1.3	1.2	0.6	0.2

The current forecast indicates that there will be sufficient school places to meet demand.

Action Taken

2010: Permanent expansion of Longlands to 1 f.e.

2011: Permanent expansion of Brookland Infant and Junior Schools by 1f.e. to 3f.e.

Next steps

Forecasts will continue to be monitored to ensure there are sufficient places available in the local area to meet need.

WALTHAM CROSS & CHESHUNT EAST

10.3 & 10.4

April 2012 Forecast	2012/13	2013/14	2014/15	2015/16
Number of reception places available	270	255	255	255
Demand	254	253	280	301
Supply/Shortage	16	2	-25	-46
% Surplus/Shortage	5.9%	0.8%	-9.8%	-18.0%
No of FE	0.5	0.1	-0.8	-1.5

A shortage of places of between 1 and 1.5f.e. is forecast from 2014/15. Analysis suggests the greatest level of demand is to the south, in the Waltham Cross area.

Action taken

2010/11: Temporary expansion of Downfield by 0.5 f.e. to 2 f.e.

2011: Action included:

- temporary expansion of Downfield by 0.5 f.e. to 2 f.e.
- permanent expansion of Hurst Drive Primary by 0.5 f.e. to 2 f.e.

2012: continued temporary expansion of Downfield Primary by 0.5 f.e. to 2 f.e.

Next Steps

Feasibility work is underway to identify potential options for meeting increased demand in the local area from 2014.

WARE TOWN

8.3

April 2012 Forecast	2012/13	2013/14	2014/15	2015/16
Number of reception places available	270	270	270	270
Demand	245	264	282	312
Supply/Shortage	25	6	-12	-42
% Surplus/Shortage	9.3%	2.2%	-4.4%	-15.6%
No of FE	0.8	0.2	-0.4	-1.4

A shortage of around 1f.e. is forecast from 2014 onwards.

Action taken

St John the Baptist VA CofE Primary increased its PAN by 5 places (25 to 30) as of September 2012. The decision to do so was made by the school so as it could operate at 1FE.

Next Steps

Feasibility work is now required to establish options available to meet this demand from 2014/15.

WARE VILLAGES

8.2

April 2012 Forecast	2012/13	2013/14	2014/15	2015/16
Number of reception places available	88	91	91	91
Demand	88	69	76	82
Supply/Shortage	0	22	15	9
% Surplus/Shortage	0.0%	24.2%	16.5%	9.9%
No of FE	0.0	0.7	0.5	0.3

The current forecast indicates that there will be sufficient school places to meet demand.

Action Taken

None required to date

Next Steps

Forecasts will continue to be monitored to ensure there are sufficient places available in the local area to meet need.

WATFORD TOWN
21.2, 21.3, 21.4 & 21.5

April 2012 Forecast	2012/13	2013/14	2014/15	2015/16
Number of reception places available	1230	1110	1110	1110
Demand	1127	1138	1184	1289
Supply/Shortage	103	-28	-74	-179
% Surplus/Shortage	8.4%	-2.5%	-6.7%	-16.1%
No of FE	3.4	-0.9	-2.5	-6.0

A shortage of 1 f.e. in 2013/14 is forecast increasing to 3 f.e. from 2014/15 and 6 f.e. by 2015/16. To date, the increase in demand has primarily been concentrated in central and mid Watford. However, current forecasts indicate demand is also increasing in north Watford towards the end of the forecast period.

Action taken

2009: permanent expansion of Holywell by 0.5 f.e. to 2 f.e.

2010: temporary expansion by 1 f.e. of:

- Laurance Haines Primary to 3 f.e.
- Beechfield Primary to 2 f.e.
- Cassiobury Infant to 2 f.e.

2011: continued temporary expansion by 1 f.e. of:

- Laurance Haines Primary to 3 f.e.
- Beechfield Primary to 2 f.e.
- Cassiobury Infant to 2 f.e.

- temporary expansion of Cherry Tree by 1 f.e. to 2 f.e.

2012: permanent expansion by 1 f.e. of:

- Beechfield Primary to 2 f.e.
- Cassiobury Infant to 3 f.e.
- Holywell Primary to 3 f.e.
- Cherry Tree Primary to 2 f.e.

Temporary expansion by 1 f.e. of.:

- St Anthony's Catholic Primary to 2 f.e
- Orchard Primary to 2 f.e
- Kingsway Infant to 3 f.e
- Central Primary to 2 f.e.
- Watford Field Infant and Nursery to 3 f.e.

Next Steps

2013: permanent expansion by 1f.e. of :

- Cassiobury Junior to 3 f.e. (approved)

- St Anthony's Catholic Primary to 2 f.e (approved)
- The permanent expansion of Orchard Primary School by 1 f.e. (30 places) to 2 f.e. is proposed from September 2013. This is currently subject to public consultation and a final decision is expected in November 2012

2014:

- Feasibility work is underway to assess the deliverability of 3 new schools to meet the forecast demand. It is proposed that 2 Free School bids will be submitted to the DfE to open in September 2014. One for a 2 f.e. primary school on the Ascot Road site in west Watford and one for a 2 f.e. primary school on the Hempstead Road West Herts College Campus.

WATTON DISTRICT NORTH

8.1

April 2012 Forecast	2012/13	2013/14	2014/15	2015/16
Number of reception places available	49	49	49	49
Demand	44	34	36	51
Supply/Shortage	5	15	13	-2
% Surplus/Shortage	10.2%	30.6%	26.5%	-4.1%
No of FE	0.2	0.5	0.4	-0.1

A small shortage of places is forecast in 2015/16.

Action Taken

None required to date

Next Steps

Forecasts will continue to be monitored to ensure there are sufficient places available in the local area to meet need.

WATTON DISTRICT SOUTH

8.6

April 2012 Forecast	2012/13	2013/14	2014/15	2015/16
Number of reception places available	72	72	72	72
Demand	50	61	67	40
Supply/Shortage	22	11	5	32
% Surplus/Shortage	30.6%	15.3%	6.9%	44.4%
No of FE	0.7	0.4	0.2	1.1

The current forecast indicates that there will be sufficient school places to meet demand.

Action Taken

None required to date

Next Steps

Forecasts will continue to be monitored to ensure there are sufficient places available in the local area to meet need.

WELWYN

12.2

April 2012 Forecast	2012/13	2013/14	2014/15	2015/16
Number of reception places available	140	140	140	140
Demand	112	147	122	116
Supply/Shortage	28	-7	18	24
% Surplus/Shortage	20.0%	-5.0%	12.9%	17.1%
No of FE	0.9	-0.2	0.6	0.8

A small deficit of places is forecast for 2013/14 only.

Action taken

None required to date.

Next Steps

The county council is currently consulting on a proposal to enlarge the premises of St Michael's Woolmer Green primary school to enable this school to increase the number of reception places by 10 to 1f.e. from 2013/14 to meet forecast need from the wider area.

The impact of these proposals will be monitored along with forecast demand to ensure there are sufficient places available locally to meet need. Contingency arrangements will be agreed with schools locally to offer additional places should further capacity be required to meet peak demand in 2013/14.

WELWYN GARDEN CITY

12.3 & 12.4

April 2012 Forecast	2012/13	2013/14	2014/15	2015/16
Number of reception places available	645	615	615	615
Demand	619	572	625	596
Supply/Shortage	26	43	-10	19
% Surplus/Shortage	4.0%	7.0%	-1.6%	3.1%
No of FE	0.9	1.4	-0.3	0.6

A shortage of around 0.5f.e is forecast for 2014/15.

Action Taken

2010/11: Temporary expansion of Watchlytes Primary School by 1 f.e. to 2 f.e.

2011/12: Action included:

- Temporary expansion of Watchlytes Primary School by 1 f.e. to 2 f.e.
- Permanent expansion of Creswick Primary School by 1 f.e. to 2 f.e.

2012: Temporary expansion of Springmead Primary School by 1 f.e. to 3 f.e. for one year only

Next Steps

Forecasts will continue to be monitored to ensure there are sufficient places available in the local area to meet need and contingency arrangements made locally should additional places be required to meet peak demand.

WHEATHAMPSTEAD

11.3

April 2012 Forecast	2012/13	2013/14	2014/15	2015/16
Number of reception places available	100	70	70	70
Demand	95	70	79	85
Supply/Shortage	5	0	-9	-15
% Surplus/Shortage	5.0%	0.0%	-12.9%	-21.4%
No of FE	0.2	0.0	-0.3	-0.5

The current forecast indicates a close match between the supply and demand of school places in this area, with a shortage of rising to around 0.5 f.e. from 2014/15.

Action Taken

2012: temporary increase of Beech Hyde Primary School by 1 f.e.

Next Steps

Forecasts will continue to be monitored to ensure there are sufficient places available in the local area to meet need.