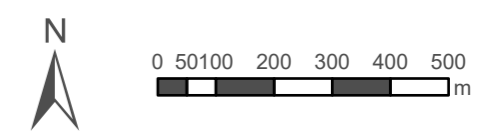
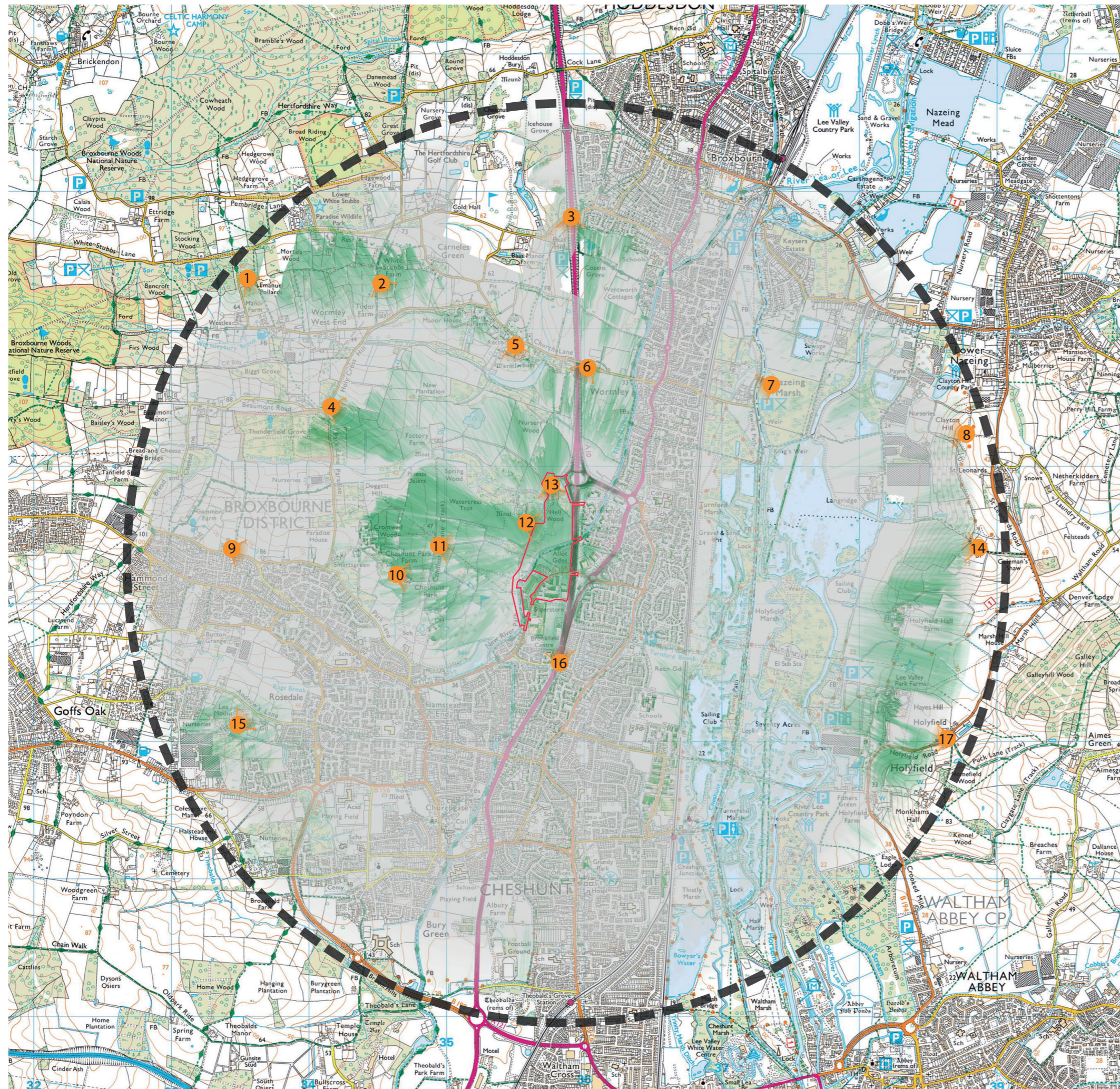





- Site Boundary
- 1km Study Area
- ▲ Listed Building
- Non-Designated Monument (Point)
- Non-Designated Monument (Line)
- Non-Designated Monument (Polygon)
- Scheduled Monument
- Registered Park and Garden



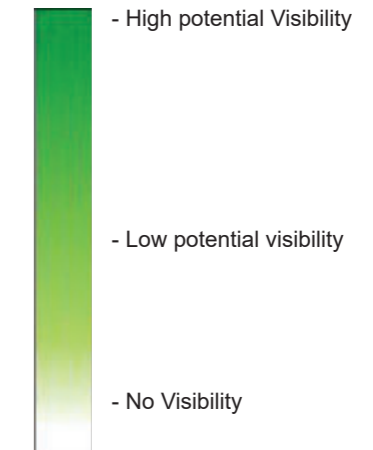
Project Details	WIE16725-100: Brookfield Riverside
Figure Title	Figure 11: Designated and Non-Designated Heritage Assets
Figure Ref	WIE16725-100_GIS_SR_11A
Date	May 2022
File Location	\\H-Incs\well\Projects\WIE16725\100\9_GIS\WIE16725-100_GIS_EIA\

Contains OS data © Crown Copyright and database right 2020
Contains data from OS Zoomstack



-  Site Boundary
-  Study Area Boundary
-  Potential Viewpoint Location

Key for Theoretical Visibility:



Notes:

The Zone of Theoretical Visibility (ZTV) uses a Digital Surface Model (DSM) which is overlain on a 1:25,000 Ordnance Survey base map. The ZTV map indicates the potential area from which visibility of the existing site might be possible. The ZTV map is based on the baseline surface model which does not account for the effects of the proposed development. The ZTV map does not account for the likely orientation of a viewer for example when travelling in a vehicle nor does it account for the diminishment of visibility with increased viewing distance caused by the limitations of the human eye and prevailing atmospheric conditions. As such, the ZTV is an over-estimate of the extent of visibility. It is an assessment tool but should not be considered an absolute measure of visibility and does not represent the visual impact.

Project Details	WIE16725-100: Brookfield Riverside
Figure Title	Figure 12: ZTV and Viewpoint Plan
Figure Ref	WIE16725-100_GR_SR_12A
Date	May 2022
File Location	\\s-inc\wiel\projects\wie16725\100\graphics\sr\issued figures