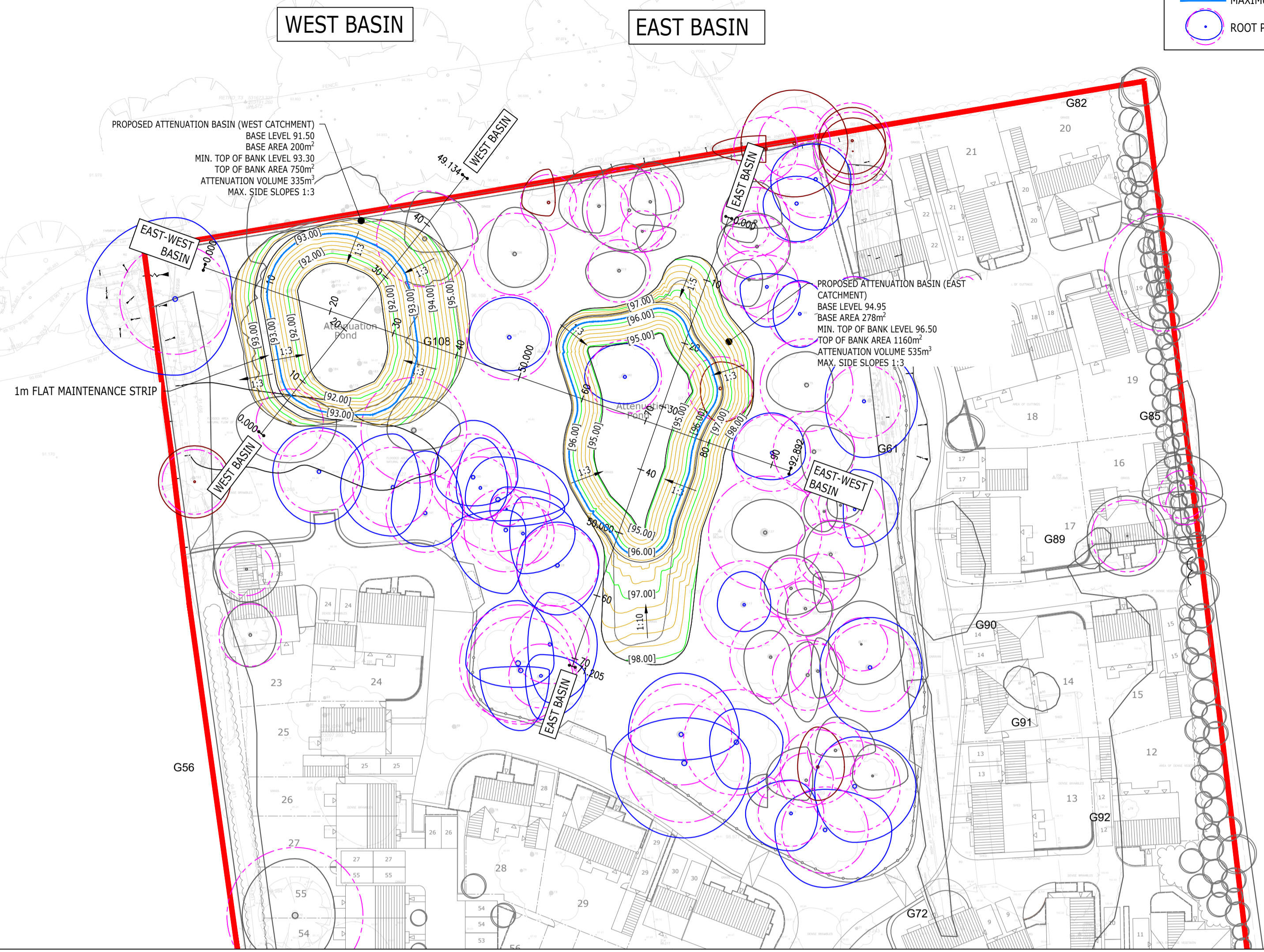


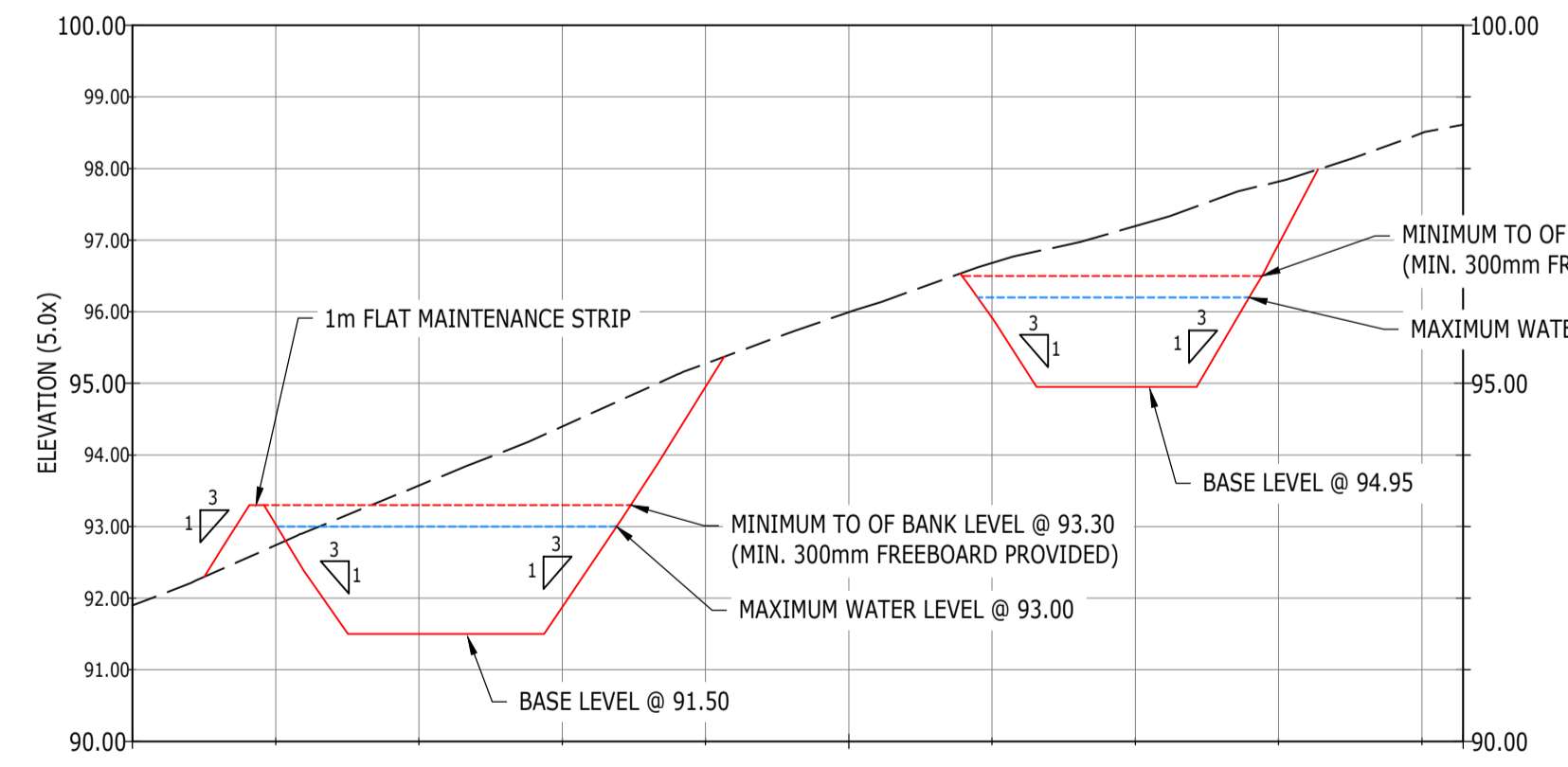
- KEY**
- MAJOR (1.0m) CONTOUR
 - MINOR (0.2m) CONTOUR
 - SITE BOUNDARY
 - MAXIMUM WATER LEVEL
 - ROOT PROTECTION AREA



- NOTES:**
- THIS DRAWING IS TO BE READ IN CONJUNCTION WITH THE RELEVANT SPECIFICATION AND ALL OTHER RELATED DRAWINGS ISSUED BY THE ENGINEER.
 - DO NOT SCALE FROM THIS DRAWING. WORK FROM FIGURED DIMENSIONS ONLY.
 - ALL DIMENSIONS SHOWN ON THIS DRAWING ARE IN METRES UNLESS OTHERWISE STATED.
 - ALL LEVELS STATED ARE IN METRES ABOVE ORDNANCE DATUM.
 - ALL DIMENSIONS, LEVELS AND SURVEY GRID CO-ORDINATES ARE TO BE CHECKED ON SITE AND THE ENGINEER NOTIFIED IMMEDIATELY OF ANY DISCREPANCIES PRIOR TO THE COMMENCEMENT OF THE WORKS.
 - PRIOR TO THE COMMENCEMENT OF THE WORKS, THE CONTRACTOR MUST CHECK THE INVERT LEVELS OF THE EXISTING SPURS AND MANHOLE CHAMBERS TO WHICH ANY CONNECTIONS ARE TO BE MADE. ANY DISCREPANCIES SHALL BE REPORTED TO THE ENGINEER IMMEDIATELY.
 - NO DEVIATION FROM THE DETAILS SHOWN ON THIS DRAWING IS PERMITTED WITHOUT PRIOR PERMISSION FROM THE ENGINEER.
 - THE CONTRACTOR SHALL UNDERTAKE SUCH MATERIALS TESTING AS INDICATED IN THE SPECIFICATIONS AND SHALL INCLUDE THE COST OF TESTING IN THE TENDER.
 - UNLESS STATED OTHERWISE, ALL EXCAVATED MATERIAL SHALL BE DISPOSED OF AT AN APPROVED TIP OFF-SITE.
 - THE PUBLIC HIGHWAY AND WORKS WILL BE KEPT CLEAN AND FREE OF DEBRIS BY USE OF WHEEL WASHING FACILITIES AND ROAD SWEEPERS TO THE COUNCIL'S SATISFACTION.
 - UPON COMPLETION OF THE WORKS, THE CONTRACTOR SHALL UNDERTAKE ALL NECESSARY MAINTENANCE REPAIRS TO RETURN THE HIGHWAY TO ITS FORMER CONDITION.
 - THE CONTRACTOR SHALL BE RESPONSIBLE FOR OBTAINING ALL NECESSARY APPROVALS FROM THE LOCAL AUTHORITY PRIOR TO COMMENCING WORKS ON EXISTING OR PARTLY CONSTRUCTED ADAPTABLE HIGHWAY.
 - ALL EXISTING LEVELS, GRADIENTS, DEPTHS ETC. TO BE CHECKED ON SITE PRIOR TO CONSTRUCTION AND ANY DISCREPANCIES TO BE REPORTED TO THE ENGINEER IMMEDIATELY.
 - THE SETTING OUT OF THE DRAINAGE WORKS IS TO BE AGREED ON-SITE WITH THE ENGINEER, PRIOR TO THE COMMENCEMENT OF THE WORKS.
 - THE CONTRACTOR SHALL TAKE ALL NECESSARY PRECAUTIONS TO PROTECT THE DRAINAGE WORKS FOR THE DURATION OF THE CONTRACT.
 - THE CONTRACTOR SHALL CONTACT ALL OF THE APPROPRIATE STATUTORY UNDERTAKERS AND ESTABLISH THE EXACT LOCATION OF ALL SERVICES, PRIOR TO THE COMMENCEMENT OF THE WORKS, BY HAND DUG TRIAL PITS.
 - ALL MATERIALS AND WORKMANSHIP SHALL COMPLY FULLY WITH THE MANUAL OF CONTRACT DOCUMENTS FOR HIGHWAY WORKS, VOLUME ONE, SPECIFICATION FOR HIGHWAY WORKS AND THE LOCAL AUTHORITY SPECIFICATION FOR ROAD CONSTRUCTION AND STANDARD DETAILS.
 - THE CONTRACTOR SHALL UNDERTAKE SUCH MATERIALS TESTING AS INDICATED IN THE SPECIFICATIONS AND SHALL INCLUDE THE COST OF TESTING IN THE TENDER.
 - UNLESS STATED OTHERWISE, ALL EXCAVATED MATERIAL NOT SUITABLE FOR RE-USE SHALL BE DISPOSED OF AT AN APPROVED TIP OFF-SITE.

- SECTIONS KEY**
- EXISTING SURFACE
 - PROPOSED BASIN
 - MAXIMUM WATER LEVEL
 - MINIMUM TOP OF BANK

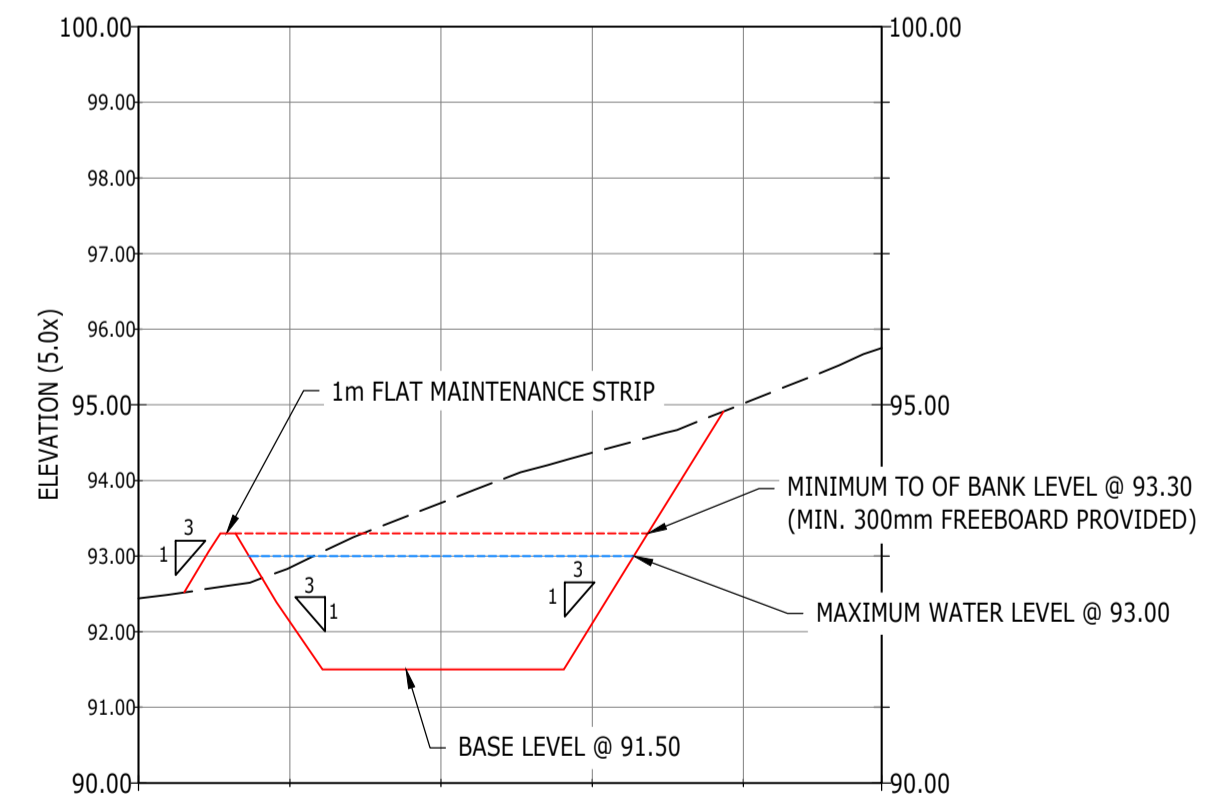
PROFILE VIEW: EAST & WEST BASIN
 SCALE: H:500, V:100
 DATUM: 90.000



CHAINAGE	0.000	10.000	20.000	30.000	40.000	50.000	60.000	70.000	80.000	90.000	92.892
EXISTING LEVELS	91.897	92.739	93.573	94.396	95.275	95.991	96.682	97.197	97.818	98.494	98.612
FINISHED LEVELS		93.032	91.500	91.972	94.948		95.919	94.950	96.939		
HOR											
VER											

EAST-WEST BASIN

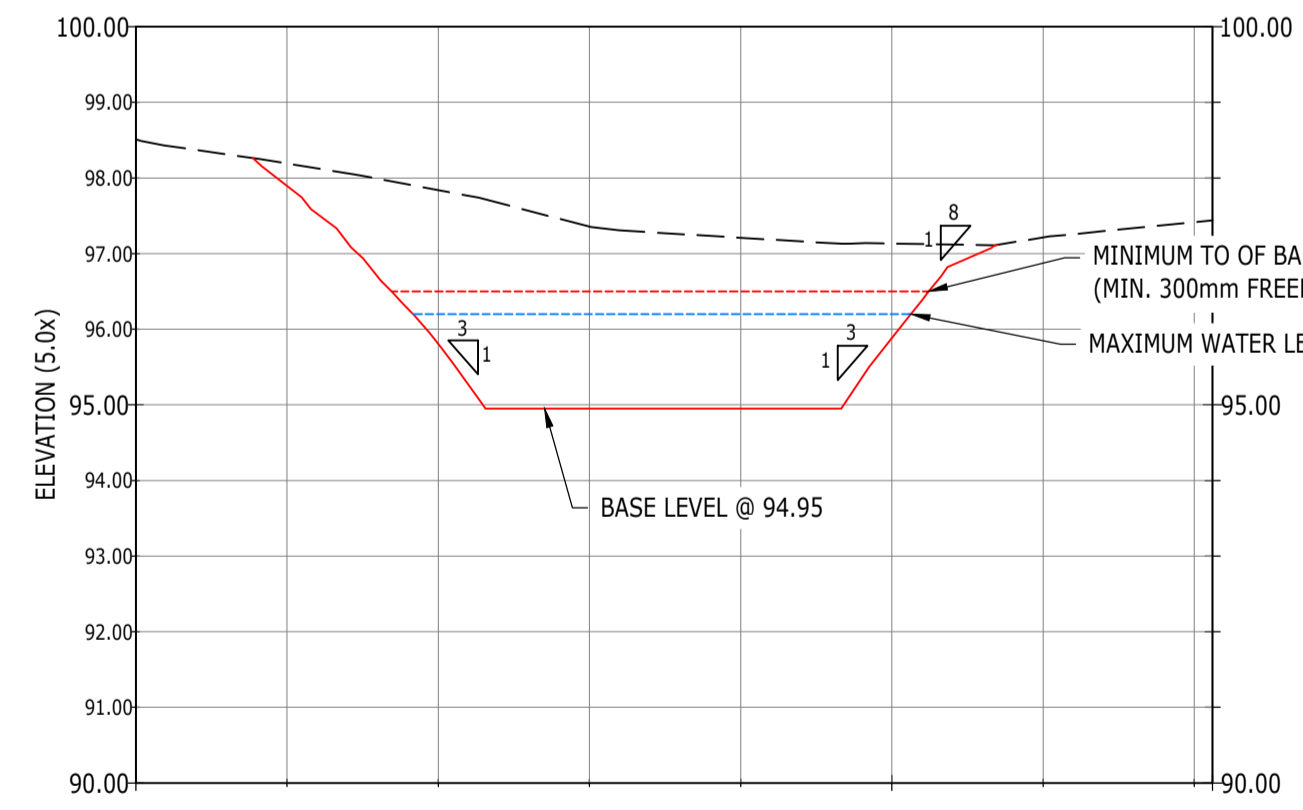
PROFILE VIEW: WEST BASIN
 SCALE: H:500, V:100
 DATUM: 90.000



CHAINAGE	0.000	10.000	20.000	30.000	40.000	49.134
EXISTING LEVELS	92.442	92.848	93.703	94.367	95.018	95.753
FINISHED LEVELS		92.135	91.500	92.108		
HOR						
VER						

WEST BASIN

PROFILE VIEW: EAST BASIN
 SCALE: H:500, V:100
 DATUM: 90.000

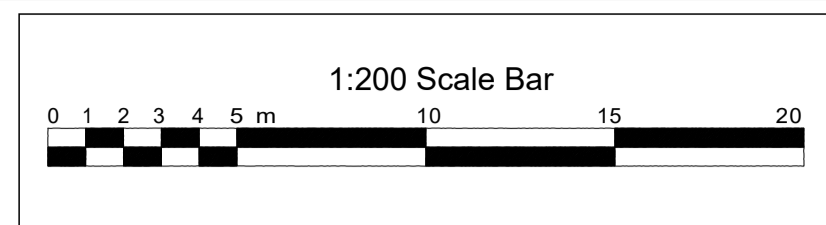


CHAINAGE	0.000	10.000	20.000	30.000	40.000	50.000	60.000	70.000
EXISTING LEVELS	98.512	96.192	97.840	97.357	97.210	97.132	97.213	97.416
FINISHED LEVELS		97.896	95.807	94.950	94.950	95.888		
HOR								
VER								

EAST BASIN

NOT FOR CONSTRUCTION
 FOR PLANNING

Rev	Description	Dn	Chk	App	Date
ARDENT CONSULTING ENGINEERS Third Floor The Hallmark Building 52-56 Leadenhall Street London EC3M 5JF Tel: 020 7680 4088 Web: www.ardent-ce.co.uk E-mail: enquiries@ardent-ce.co.uk					
Client: COUNTRYSIDE PROPERTIES (UK) Ltd					
Project Title: CUFFLEY HILL, GOFFS OAK					
Drawing Title: ATTENUATION BASIN SECTIONS					
A1 Scale: 1:500	Date: MAR 2020	Designed by: AW			
Drawn by: AW	Checked by: AW	Approved by: BB			
Drawing Number: 162101-020					Rev: -



LEGEND	
	PROPOSED TREE:
	HEDGE PLANTING:
	NATIVE AND ORNAMENTAL SHRUB PLANTING:
	WETLAND MEADOW GRASS MIX: EMORSGATE EG8
	WOODLAND GRASS SHADE MIX: EMORSGATE EG9
	EXISTING TREE TO REMAIN:
	BARK MULCH APRON:
	NATIVE BULB PLANTING:
	KNEE RAIL TO PREVENT PARKING:
	NO DIG HOGGIN PATH:

Meadow Grass:



Wildflower meadow grass to attenuation basin Woodland grass mixture to rest of Open Space

Marginal Planting:



Iris pseudacorus to wetland areas

Naturalised Bulb Planting:



Crocus, Snowdrops, Bluebell & Daffodil bulb planting.

Native Hedge & Native Planting:



Native hedge & thicket planting Pockets of Native planting to basin edge Tree planting to basin edge

PL1	30.03.20	MJR	Planning Issue	date:	March 2020	project:	Cuffley Hill Goffs Oak
Rev	Date	By	Description	scale:	@A1 1:200	drawing:	Landscape Strategy to Woodland
				drawn by:	MJR	checked:	MJR
				checked:	MJR	Information:	PL Planning
						T Tender	PL
						C Construction	drawing no:
						P Preliminary	C00185_CSP_EL_XX_DR_L_X003
							sheet no:
							PL1

© This drawing is copyright of Countryside and must not be copied or reproduced in whole or in part, nor used in conjunction with any project without Countryside's written consent. DO NOT SCALE THIS DRAWING