

BOROUGH OF BROXBOURNE
ROAD TRAFFIC REGULATION ACT 1984

THE BOROUGH OF BROXBOURNE (VARIOUS ROADS)
(DISABLED PERSONS' PARKING PLACES) ORDER 2020

THE COUNCIL OF THE BOROUGH OF BROXBOURNE, pursuant to arrangements made with the Hertfordshire County Council under Section 19 of the Local Government Act 2000 and the Local Authorities (Arrangements for the Discharge of Functions) (England) Regulations 2000, and in exercise of its powers under Sections 32, 35 and Part IV of Schedule 9 of the Road Traffic Regulation Act 1984, (hereinafter called "the 1984 Act") and of all other enabling powers, and after consultation with the Chief Officer of Police in accordance with Part III of Schedule 9 of the Act of 1984, hereby make the following Order:

1(1) In this Order

"Disabled Person's Badge" has the same meaning as in The Local Authorities' Traffic Orders (Exemptions for Disabled Persons) (England) Regulations 2000.

"Disabled Person's Vehicle" has the same meaning as in Section 142(1) of the 1984 Act

"Driver", in relation to a vehicle waiting in a Parking Place, means the person driving the vehicle at the time it was left in the Parking Place

"Parking Place" means any part of a road authorised by this Order to be used as a parking place

(2) For the purposes of this Order a vehicle shall be regarded as displaying a Disabled Person's Badge in the relevant position if:

- (i) in the case of a vehicle fitted with a dashboard or fascia panel, the badge is exhibited thereon so that the serial number and the date of expiry of the badge is legible from outside the vehicle; or
- (ii) in the case of a vehicle not fitted with a dashboard or fascia panel, the badge is exhibited in a conspicuous position on the vehicle so that the serial number and the date of expiry of the badge is legible from outside the vehicle.

2 The Interpretation Act 1978 shall apply for the interpretation of this Order as it applies for the interpretation of an Act of Parliament.

3 The restrictions imposed by this Order shall be in addition to and not in derogation from any restriction or requirement imposed by any other regulations made or having effect as if made under the Act of 1984 or by or under any other enactment

4(1) Those parts of the roads specified in Column 1 of Schedule 1 and shown for identification purposes only in the plan in the Schedule to this Order are authorised to be used in a position specified in Column 2 of the said Schedule 1 and subject to the following provisions of this Order, as Parking Places at any time for Disabled Person's Vehicles which display in the relevant position a Disabled Person's Badge.

(2) Nothing in paragraph (1) of this Article shall restrict the power of the Council, for preventing obstruction of the roads, by order, or by notice on the occasion of any public procession, rejoicing or illumination, or when the roads are thronged or liable to be obstructed, to close the Parking Place.

- 5 Where in Column 1 of Schedule 1 to this Order a Parking Place is described as available for a Disabled Person's Vehicle which displays in the relevant position a Disabled Person's Badge, the Driver of a vehicle shall not permit it to wait in that Parking Place unless it is:
- (a) a Disabled Person's Vehicle on which is displayed in the relevant position a Disabled Person's Badge, and
 - (b) wholly within the limits of the Parking Place.
- 6 A Driver of a vehicle shall not use a Parking Place:-
- (a) so as unreasonably to prevent access to any premises adjoining the road, or the use of the road by other persons, or so as to be a nuisance;
 - (b) when for preventing obstruction of the road the Council shall by order or by notice made on the occasion of any public procession, rejoicing or illumination or when the roads are thronged or liable to be obstructed have closed that Parking Place and exhibited notice of such closing on or near the Parking Place.
- 7 The Driver of a motor vehicle using a Parking Place shall stop the engine as soon as the vehicle is in a position in the Parking Place, and shall not start the engine except when about to change the position of the vehicle in or to depart from the Parking Place.
- 8 No person shall use a vehicle, while it is in a Parking Place, in connection with the sale of any article to persons in or near the Parking Place or in connection with the selling or offering for hire of his skill or service.
- 9 Subject to the provision hereto, when a vehicle is left in a Parking Place in contravention of any of the provisions contained in Articles 3 and 4 of this Order a person authorised in that behalf by the Council may remove the vehicle or arrange for it to be removed from that Parking Place provided that when a vehicle is waiting in a Parking Place in contravention of the provisions of Articles 3 and 4 of this Order, a person authorised in that behalf by the Council may alter or cause to be altered the position of the vehicle in order that its position shall comply with that provision.
- 10 Any person removing a vehicle or altering its position by virtue of Article 7 of this Order may do so by towing or driving the vehicle or moving the vehicle in such other manner as he may think necessary and may take such measures in relation to the vehicle as he may think necessary to enable him to remove it or alter its position, as the case may be.
- 11 When a person authorised by the Council removes or makes arrangements for the removal of a vehicle from a Parking Place by virtue of Article 7 of this Order, he shall make such arrangements as may be reasonably necessary for safe custody of the vehicle.
- 12 A vehicle left in a Parking Bay in contravention of Articles 2 or 3 of this Order or left otherwise in accordance with the provisions of this Order shall incur a penalty charge.
- 13 The lengths of road specified in Schedule 2 of this Order are no longer authorised for the sole parking of disabled persons vehicles.
- 14 The provisions of The Borough of Broxbourne (Control of Parking) (Consolidation) Order 2013 ("the 2013 Order") are hereby revoked but only in so far as they are affected by the restrictions imposed by this Order.

- 15 Paragraph 4 of schedule 1 of the Borough of Broxbourne (Various Roads) (Disabled Persons Parking Places) Order 2015 is revoked.
- 16 Paragraph 13 of schedule 1 of the Borough of Broxbourne (Various Roads) (Disabled Persons Parking Places) Order 2016 is revoked.
- 17 Paragraph 6 of schedule 1 of the Borough of Broxbourne (Various Roads) (Disabled Persons Parking Places) Order No.2 2019 is revoked.
- 18 This Order shall come into operation on **20th July 2020** and may be cited as the Borough of Broxbourne (Various Roads) (Disabled Persons' Parking Places) Order 2020.

SCHEDULE 1

	Column 1	Column 2
	Description of the Parking Place	
i	ADMIRALS WALK, HODDESDON North-east side from a point 0.8 metres south-east of a point in line with the south-eastern flank wall of No.53 Admirals Walk, north-westwards for a distance of 6.5 metres.	Parallel and adjacent to the kerb
ii	BROADLANDS CLOSE, WALTHAM CROSS West side from a point 1.2 metres north of a point in line with the northern flank wall of No.2 Broadlands Close, northwards for a distance of 6.0 metres.	In the layby, parallel and adjacent to the kerb
iii	COWLES, CHESHUNT South side from a point 4.2 metres east of a point in line with the eastern flank wall of No.36 Cowles, eastwards for a distance of 6.0 metres.	In the layby, Parallel and adjacent to the kerb
iv	CUNNINGHAM ROAD, CHESHUNT East side from a point 3.5 metres south of a point in line with the northern flank wall of Nos.14/16 Cunningham Road, southwards for a distance of 6.0 metres.	Parallel and adjacent to the kerb
v	DEWHURST ROAD, CHESHUNT South side from a point 11.3 metres west of a point in line with the eastern flank wall of No.48 Dewhurst Road, westwards for a distance of 6.0 metres.	Parallel and adjacent to the kerb
vi	EASTERN AVENUE, WALTHAM CROSS West side from a point 12.7 metres south of a point in line with the northern flank wall of No.15 Eastern Avenue, southwards for a distance of 5.5 metres.	Parallel and adjacent to the kerb

vii	<p>FAIRFIELD ROAD, HODDESDON West side from a point 0.9 metres south of a point in line with the southern flank wall of No.25 Fairfield Road, northwards for a distance of 6.0 metres.</p>	Parallel and adjacent to the kerb
viii	<p>BELL LANE, BROXBOURNE North side from a point 1.2 metres east of a point in line with the eastern flank wall of No.1 Bell Lane, eastwards for a distance of 5.75 metres.</p>	In the layby, parallel and adjacent to the kerb
ix	<p>LEA ROAD, HODDESDON North side from a point 1.8 metres west of a point in line with the western flank wall of No.10 Lea Road, eastwards for a distance of 6.0 metres.</p>	In the parking bay, parallel and adjacent to the kerb
x	<p>LOWER MEADOW, CHESHUNT South side from a point 1.4 metres west of a point in line with the eastern flank wall of No.39 Lower Meadow, eastwards for a distance of 5.7 metres.</p>	In the parking bay, parallel and adjacent to the kerb
xi	<p>OLD HIGHWAY, HODDESDON North east side from a point 4.45 metres south east of a point in line with the north western flank wall of No.108 Old Highway, south eastwards for a distance of 6.0 metres.</p>	Parallel and adjacent to the kerb
xii	<p>PROSPECT ROAD, CHESHUNT South side from a point 2.9 metres east of a point in line with the western flank wall of No.104 Prospect Road, westwards for a distance of 6.0 metres.</p>	In the layby, parallel and adjacent to the kerb
xiii	<p>ROMAN STREET, HODDESDON North side from a point 0.65 metres east of a point in line with the eastern flank wall of No.2 Roman Street, westwards for a distance of 5.55 metres.</p>	Parallel and adjacent to the kerb
xiv	<p>SHAW CLOSE, CHESHUNT North side from a point 5.5 metres east of a point in line with the western flank wall of block Nos.37-40 Shaw Close, eastwards for a distance of 2.8 metres.</p>	In the parking bay, lengthwise at 45° to the kerb in a north/south direction
xv	<p>ST AUGUSTINES CLOSE, BROXBOURNE West side, from a point 1.7 metres north of a point in line with the southern flank wall of Nos.1/3 St Augustines Close, northwards for a distance of 2.5 metres.</p>	In the parking bay, lengthwise at 90° to the kerb in an east/west direction
xvi	<p>THE DRIVE, GOFFS OAK East side from a point 5.5 metres north of a point in line with the southern flank wall of No.48 The Drive, northwards for a distance of 2.4 metres.</p>	In the parking bay, lengthwise at 90° to the kerb in an east/west direction

- | | | |
|------|--|---|
| xvii | WHITEFIELDS ROAD, CHESHUNT
East side from a point 15.7 metres south of a point in line with the northern flank wall of block Nos.212-218 Whitefields Road, southwards for a distance of 6.0 metres. | In the layby, parallel and adjacent to the kerb |
|------|--|---|

SCHEDULE 2

Description of those parking places to be removed

ABBEY ROAD, WALTHAM CROSS. South side from a point in line with the boundary between No.41 and No.43, north eastwards for a distance of 6 metres.

CASTLE ROAD, HODDESDON. East side from a point 1 metre north west of a point in line with the southern flank wall of No.29, south eastwards for a distance of 3 metres.

GEWS CORNER, CHESHUNT. East side from a point 3.6 metres north of a point in line with the southern flank wall of No.15 Gews Corner, northwards for a distance of 6.0 metres.

NURSERY ROAD, HODDESDON. South side from a point 1.5 metres east of a point in line with the western flank wall of No.17 Nursery Road, eastwards for a distance of 6.0 metres.

WHITEFIELDS ROAD, CHESHUNT. From a point in line with the boundary between Nos.96 and 94 eastwards for a distance of 6 metres.

WINTERSCROFT ROAD, HODDESDON. South side from a point 3 metres west of a point in line with the boundary between Nos.17&19 Winterscroft Road, westwards for a distance of 6 metres.

DOWNFIELD ROAD, CHESHUNT. East side from a point 10.5 metres south of a point in line with the southern front wall of No.1 Wood Green Way, southwards for a distance of 6.0 metres.

IN WITNESS whereof the Common Seal of the Council of the Borough of Broxbourne has hereunto been affixed on this **15th July 2020**

The Common Seal of the COUNCIL OF THE BOROUGH OF BROXBOURNE was hereunto affixed in the presence of:-



A handwritten signature in blue ink, appearing to read 'D. King'.

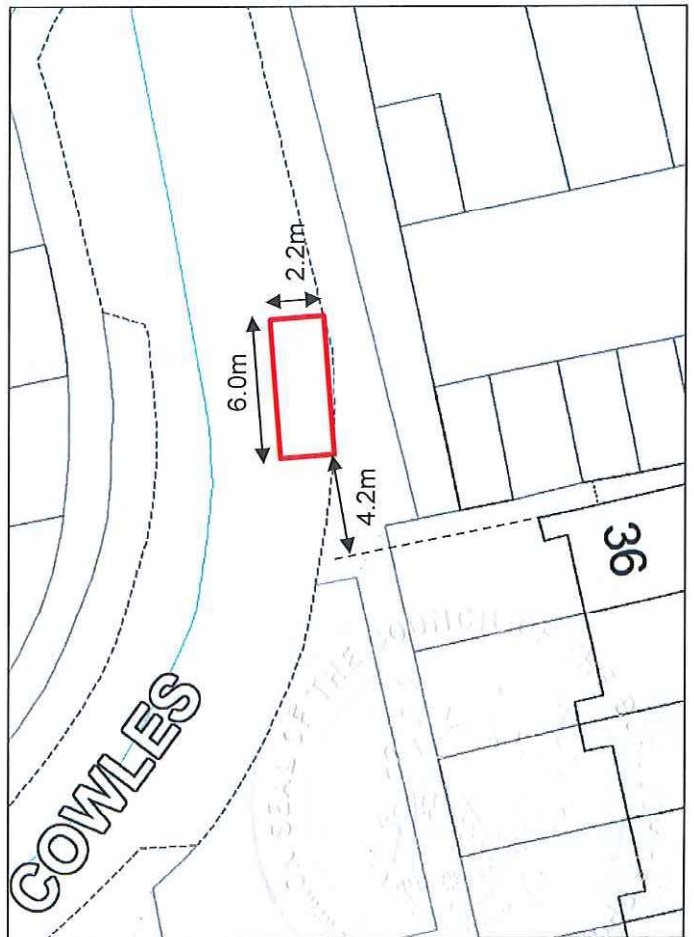
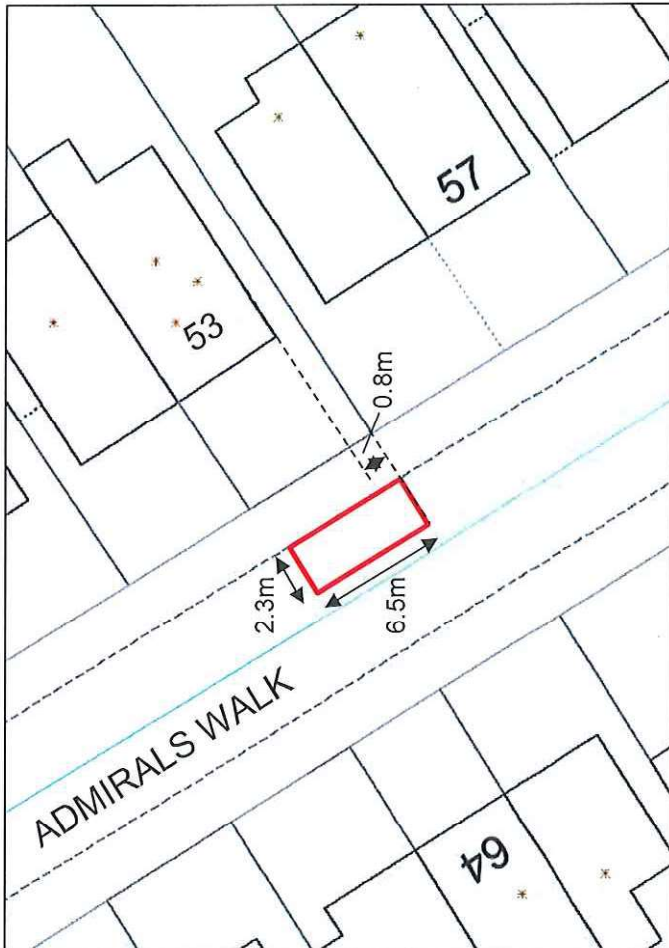
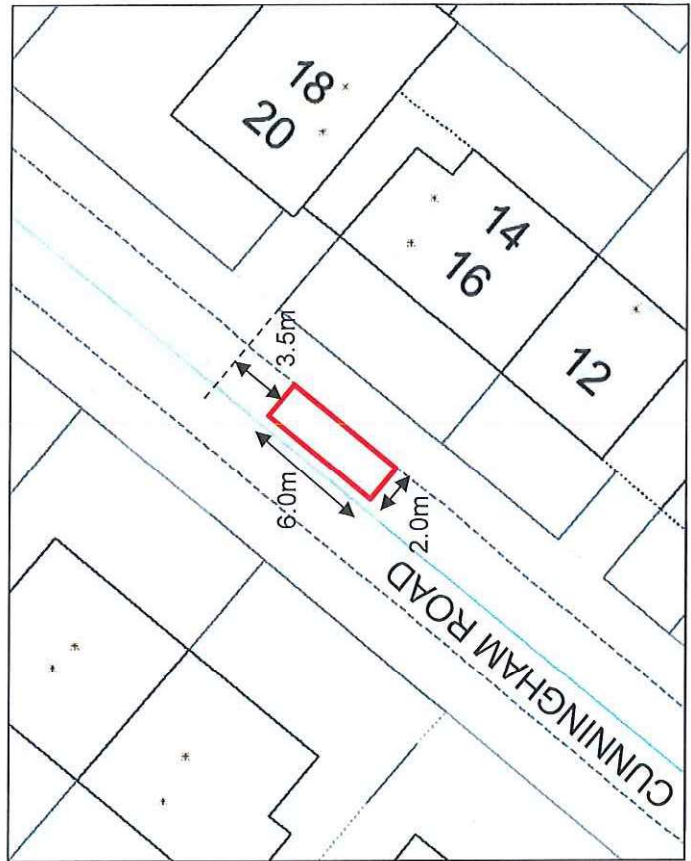
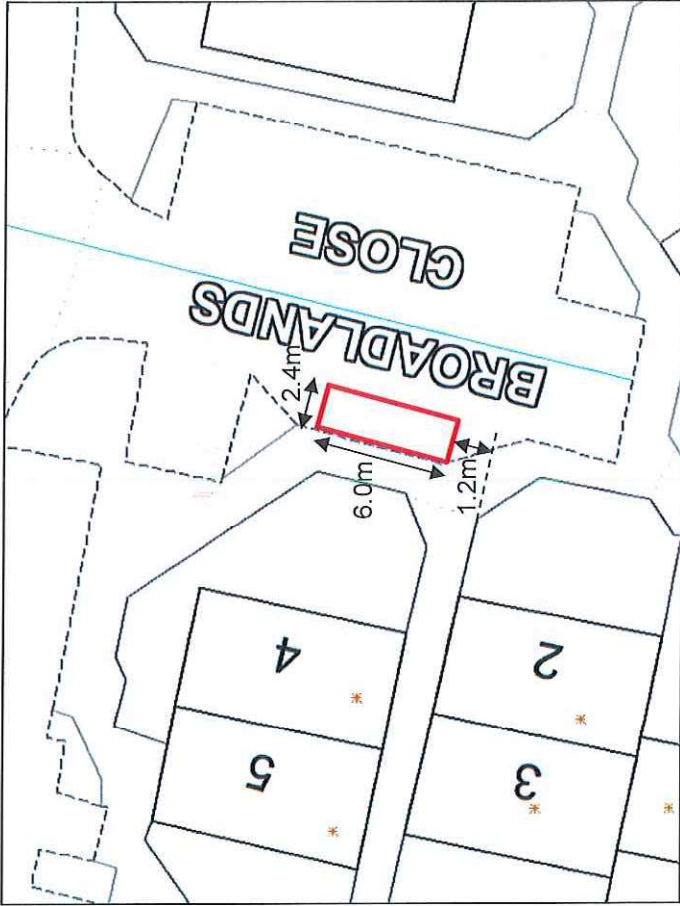
Authorised Signatory

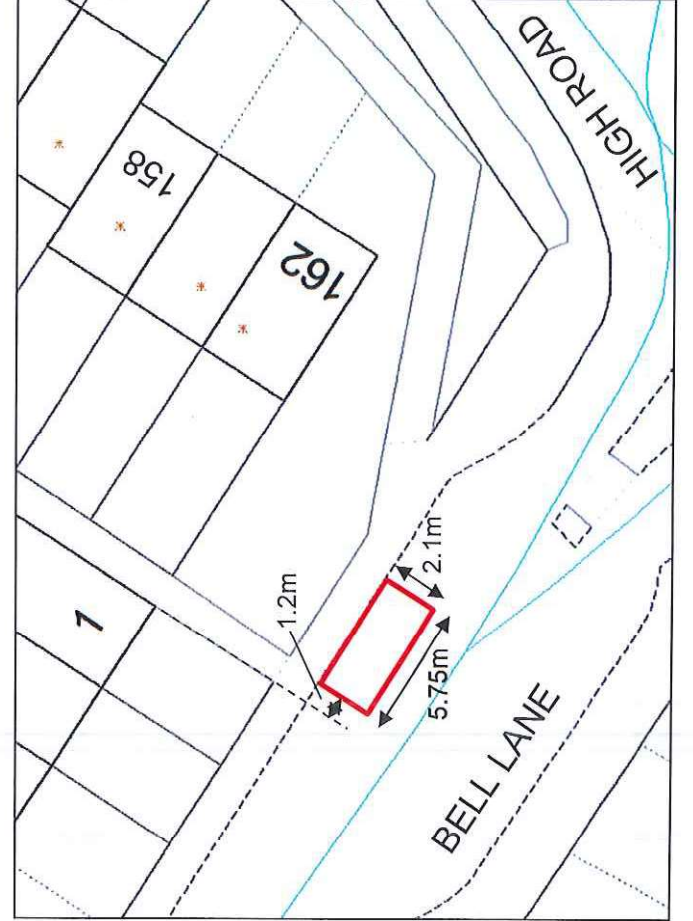
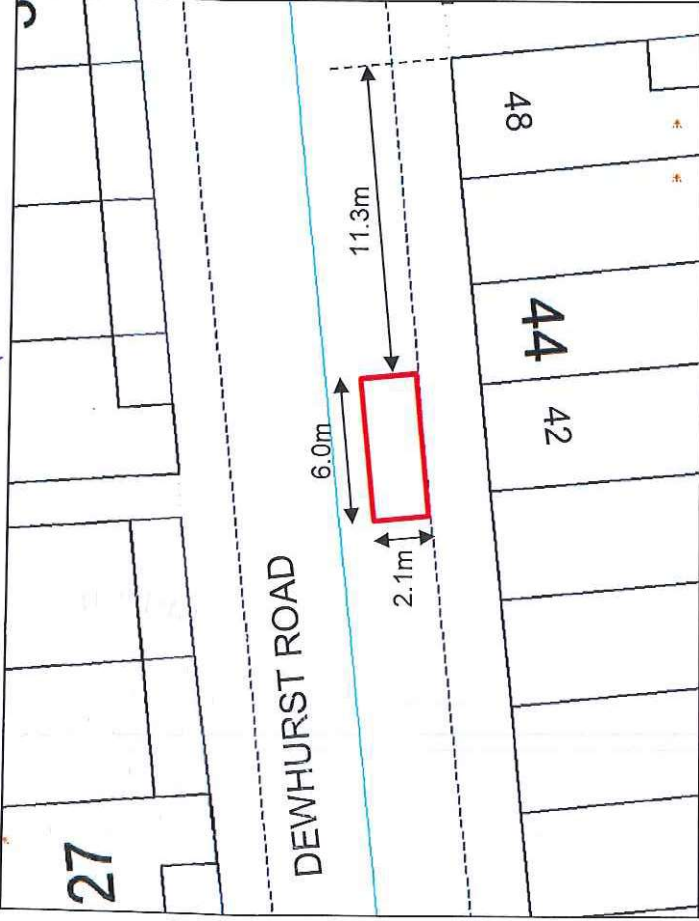
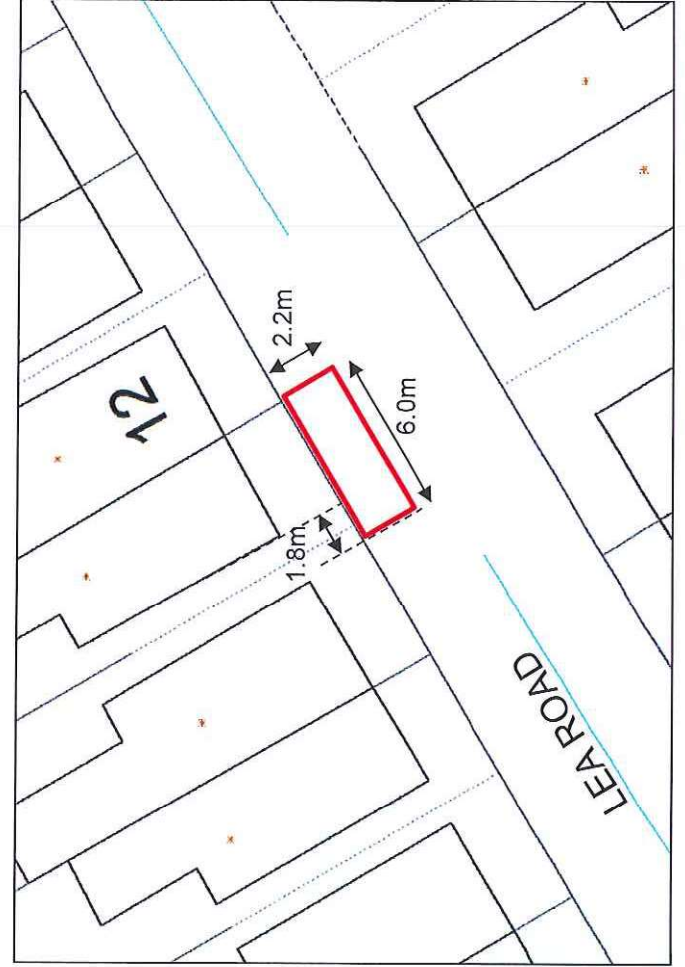
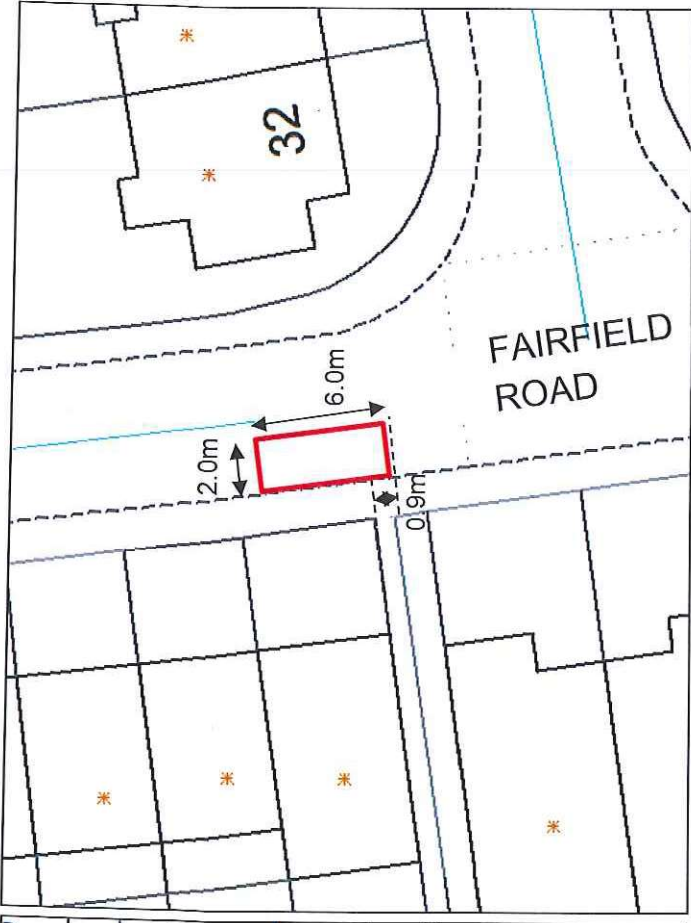
DIANA KING

Dated **15th July 2020**

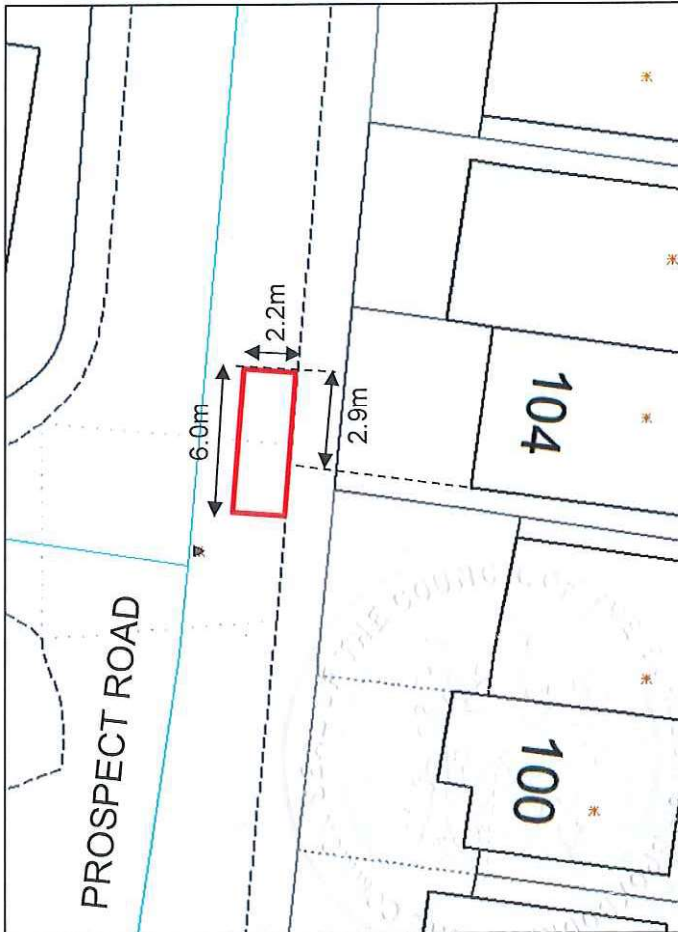
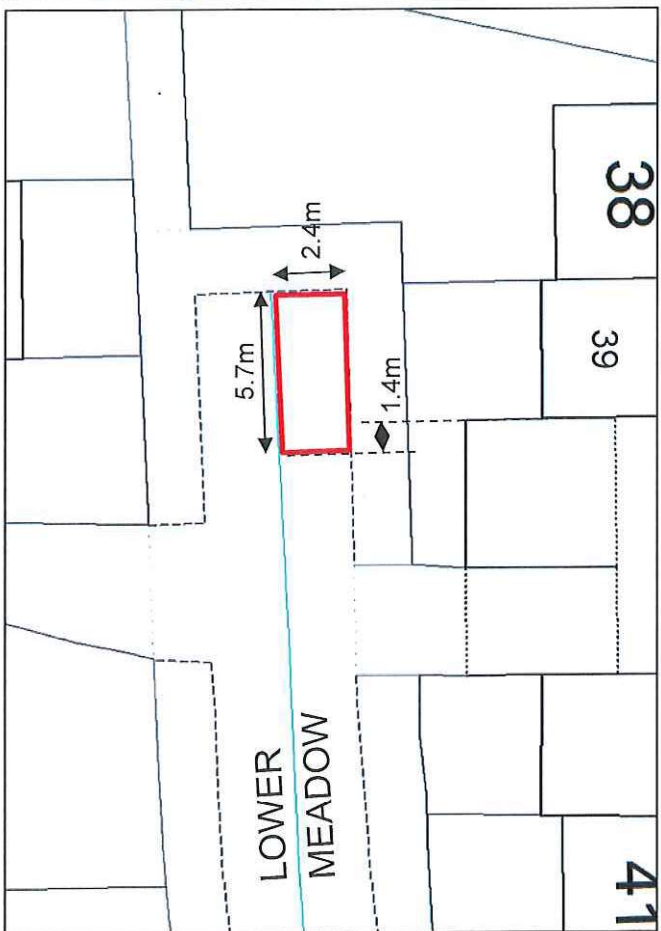
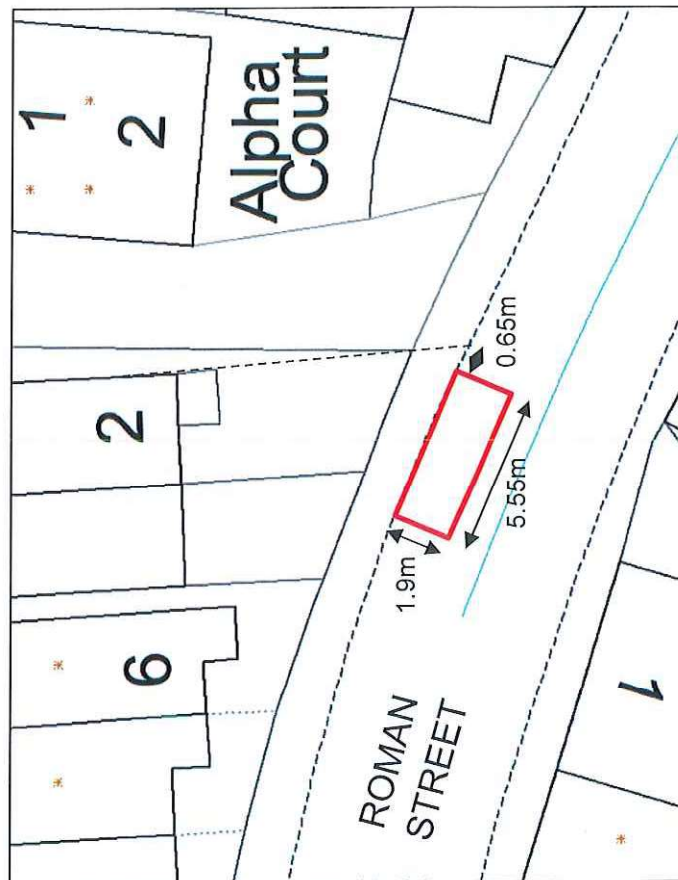
ROAD TRAFFIC REGULATION ACT 1984

THE BOROUGH OF BROXBOURNE
(VARIOUS ROADS) (DISABLED
PERSON'S PARKING PLACES)
ORDER 2020

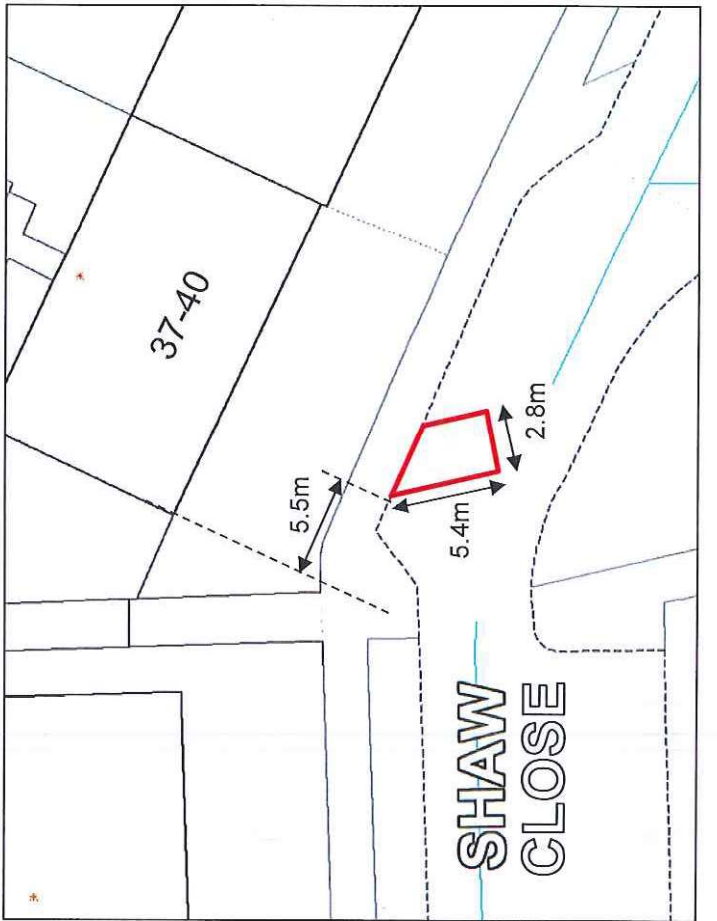
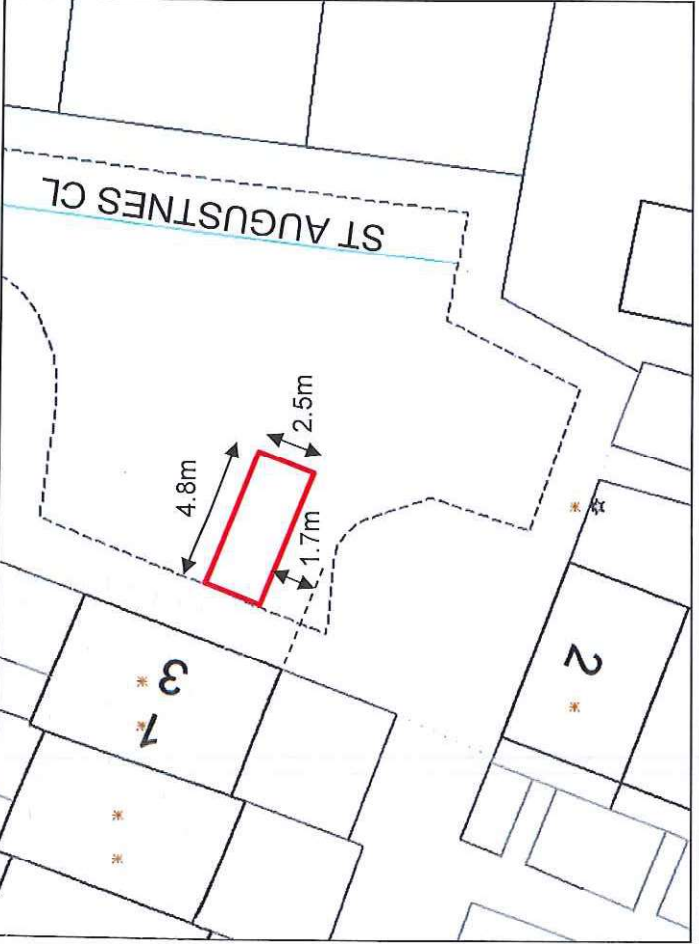
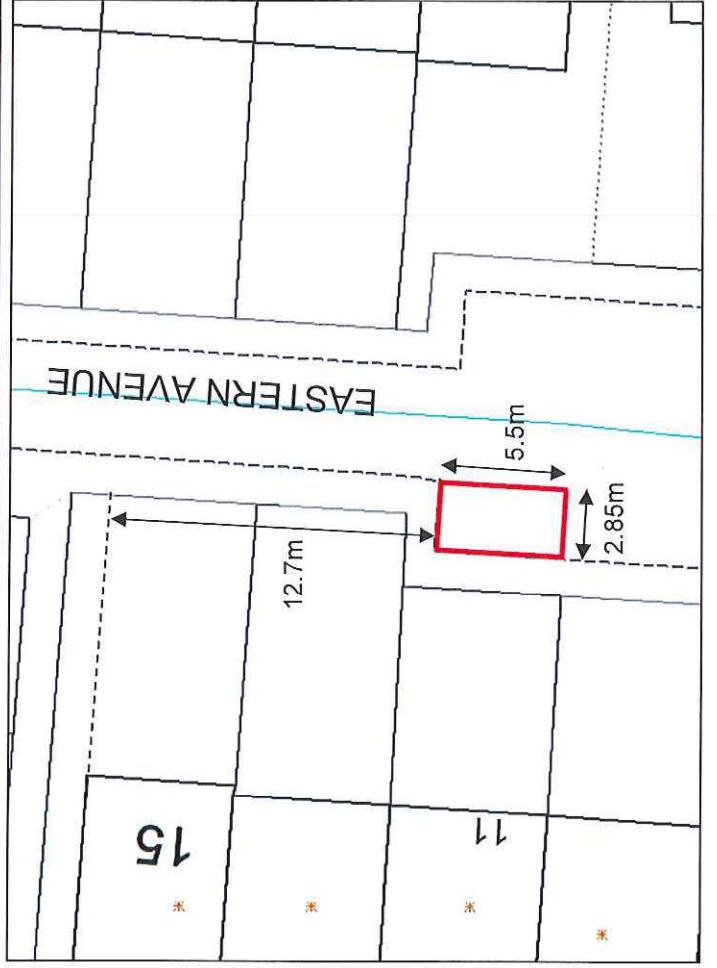
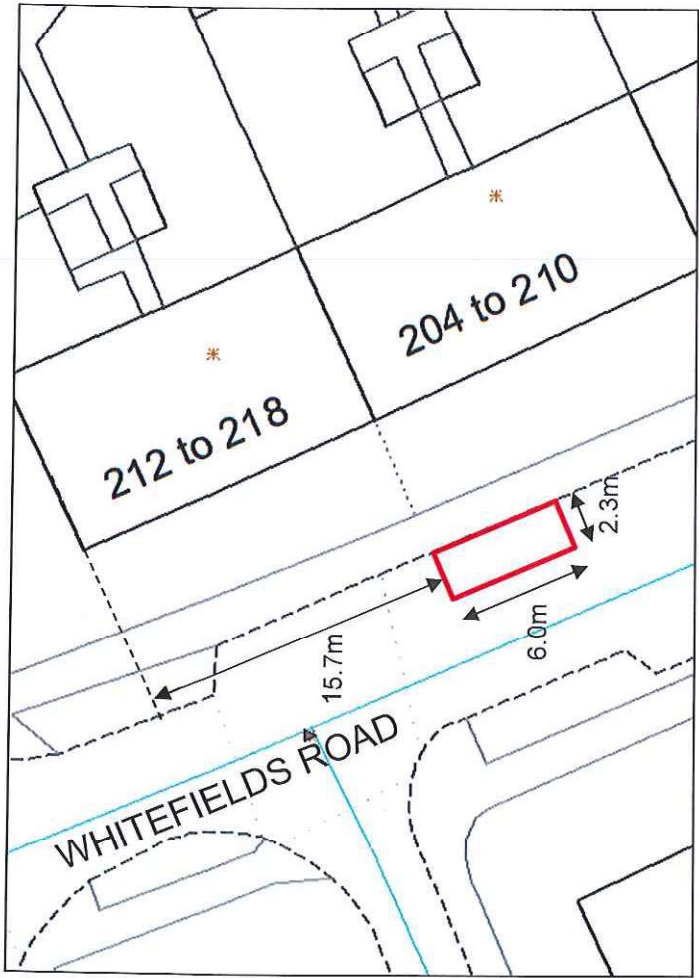


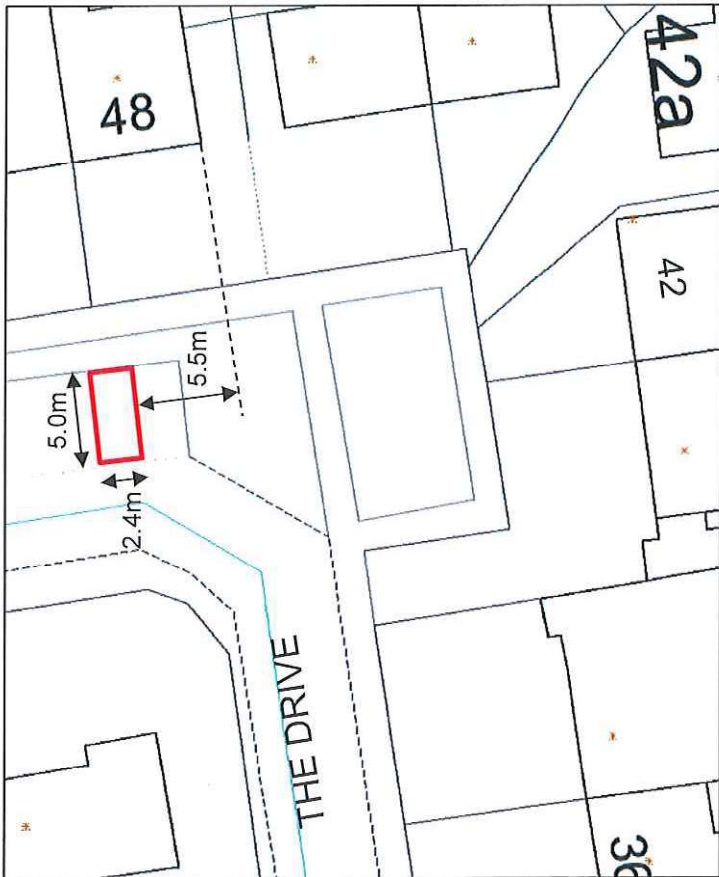


D. n. g.



D. J. L.






AUTHORISED SIGNATORY

