

**BOROUGH OF BROXBOURNE**  
**ROAD TRAFFIC REGULATION ACT 1984**

**THE BOROUGH OF BROXBOURNE (VARIOUS ROADS)**  
**(DISABLED PERSONS' PARKING PLACES) ORDER No.2 2018**

**THE COUNCIL OF THE BOROUGH OF BROXBOURNE**, pursuant to arrangements made with the Hertfordshire County Council under Section 19 of the Local Government Act 2000 and the Local Authorities (Arrangements for the Discharge of Functions) (England) Regulations 2012, and in exercise of its powers under Sections 32 and 35 of Schedule 9 of the Road Traffic Regulation Act 1984, (hereinafter called "the 1984 Act") and of all other enabling powers, and after consultation with the Chief Officer of Police in accordance with Part III of Schedule 9 of the Act of 1984, hereby make the following Order:

1(1) In this Order

"Disabled Person's Badge" has the same meaning as in The Local Authorities' Traffic Orders (Exemptions for Disabled Persons) (England) Regulations 2000.

"Disabled Person's Vehicle" has the same meaning as in Section 142(1) of the 1984 Act

"Driver", in relation to a vehicle waiting in a Parking Place, means the person driving the vehicle at the time it was left in the Parking Place

"Parking Place" means any part of a road authorised by this Order to be used as a parking place

(2) For the purposes of this Order a vehicle shall be regarded as displaying a Disabled Person's Badge in the relevant position if:

- (i) in the case of a vehicle fitted with a dashboard or fascia panel, the badge is exhibited thereon so that the serial number and the date of expiry of the badge is legible from outside the vehicle; or
- (ii) in the case of a vehicle not fitted with a dashboard or fascia panel, the badge is exhibited in a conspicuous position on the vehicle so that the serial number and the date of expiry of the badge is legible from outside the vehicle.

2(1) Those parts of the roads specified in Column 1 of Schedule 1 and shown for identification purposes only in the plan attached to the Order are authorised to be used in a position specified in Column 2 of the said Schedule 1 and subject to the following provisions of this Order, as Parking Places at any time for Disabled Person's Vehicles which display in the relevant position a Disabled Person's Badge.

(2) Nothing in paragraph (1) of this Article shall restrict the power of the Council, for preventing obstruction of the roads, by order, or by notice on the occasion of any public procession, rejoicing or illumination, or when the roads are thronged or liable to be obstructed, to close the Parking Place.

3 Where in Column 1 of Schedule 1 to this Order a Parking Place is described as available for a Disabled Person's Vehicle which displays in the relevant position a Disabled Person's Badge, the Driver of a vehicle shall not permit it to wait in that Parking Place unless it is:

- (a) a Disabled Person's Vehicle on which is displayed in the relevant position a Disabled Person's Badge, and

- (b) wholly within the limits of the Parking Place.
- 4 A Driver of a vehicle shall not use a Parking Place:-
- (a) so as unreasonably to prevent access to any premises adjoining the road, or the use of the road by other persons, or so as to be a nuisance;
- (b) when for preventing obstruction of the road the Council shall by order or by notice made on the occasion of any public procession, rejoicing or illumination or when the roads are thronged or liable to be obstructed have closed that Parking Place and exhibited notice of such closing on or near the Parking Place.
- 5 The Driver of a motor vehicle using a Parking Place shall stop the engine as soon as the vehicle is in a position in the Parking Place, and shall not start the engine except when about to change the position of the vehicle in or to depart from the Parking Place.
- 6 No person shall use a vehicle, while it is in a Parking Place, in connection with the sale of any article to persons in or near the Parking Place or in connection with the selling or offering for hire of his skill or service.
- 7 Subject to the provision hereto, when a vehicle is left in a Parking Place in contravention of any of the provisions contained in Articles 3 and 4 of this Order a person authorised in that behalf by the Council may remove the vehicle or arrange for it to be removed from that Parking Place provided that when a vehicle is waiting in a Parking Place in contravention of the provisions of Articles 3 and 4 of this Order, a person authorised in that behalf by the Council may alter or cause to be altered the position of the vehicle in order that its position shall comply with that provision.
- 8 Any person removing a vehicle or altering its position by virtue of Article 7 of this Order may do so by towing or driving the vehicle or moving the vehicle in such other manner as he may think necessary and may take such measures in relation to the vehicle as he may think necessary to enable him to remove it or alter its position, as the case may be.
- 9 When a person authorised by the Council removes or makes arrangements for the removal of a vehicle from a Parking Place by virtue of Article 7 of this Order, he shall make such arrangements as may be reasonably necessary for safe custody of the vehicle.
- 10 A vehicle left in a Parking Bay in contravention of Articles 2 or 3 of this Order or left otherwise in accordance with the provisions of this Order shall incur a penalty charge.
- 11 The lengths of road specified in Schedule 2 of this Order are no longer authorised for the sole parking of disabled persons vehicles.
- 12 The provisions of The Borough of Broxbourne (Control of Parking) (Consolidation) Order 2013 ("the 2013 Order") are hereby revoked but only in so far as they are affected by the restrictions imposed by this Order.
- 13 Paragraph 34 of Schedule 1 of the Borough of Broxbourne (Various Roads) (Disabled Persons Parking Places) Order No.2 2014 is revoked.
- 14 Paragraph 13 of Schedule 1 of the Borough of Broxbourne (Various Roads) (Disabled Persons Parking Places) Order No. 2017 is revoked.

- 15 This Order shall come into operation on 7<sup>th</sup> January 2019 and may be cited as the Borough of Broxbourne (Various Roads) (Disabled Persons' Parking Places) Order No.2 2018.

### SCHEDULE 1

Column 1	Column 2
Description of the Parking Place	
i TRINITY LANE, WALTHAM CROSS north side from a point 1 metre west of a point in line with the western flank wall of No.129 Trinity Lane, westwards for a distance of 5 metres.	Parallel and adjacent to the kerb
ii BETJEMAN CLOSE, CHESHUNT north side from a point 1 metre east of a point in line with the eastern flank wall of No.2 Betjeman Close, eastwards for a distance of 2.4 metres.	Lengthwise at 90° to the kerb in a north/south direction, in the end parking bay
iii HOLME CLOSE, CHESHUNT east side from a point 3.5 metres south of a point in line with the southern flank wall of No.21 Holme Close, southwards for a distance of 5 metres.	Parallel and adjacent to the kerb, in the lay-by
iv SILVERFIELD, BROXBOURNE north side from a point 3.8 metres east of a point in line with the eastern flank wall of No.47 Silverfield, eastwards for a distance of 2.4 metres.	Lengthwise at 90° to the kerb, in a north/south direction
v WINTERSCROFT ROAD, HODDESDON south side from a point 6.9 metres east of a point in line with the western flank wall of No.100 Winterscroft Road, eastwards for a distance of 3 metres.	Lengthwise at 90° to the kerb, in a south/north direction, in the parking bay
vi ELDERBEK CLOSE, CHESHUNT east side from a point 13.3 metres south of a point in line with the northern flank wall of No.65 Elderbek Close, southwards for a distance of 6 metres	Parallel and adjacent to the kerb
vii HUNTERS REACH, CHESHUNT east side from a point 4 metres north from a point in line with the southern flank wall of No.7 Hunters Reach, northwards for a distance of 5 metres.	Parallel and adjacent to the kerb, in the lay-by
viii NEWGATESTREET ROAD, GOFFS OAK northeast side from a point 2.3 metres northwest of a point in line with the northwestern flank wall of No.9 Newgatestreet Road, southeastwards for a distance of 5.5 metres.	Parallel and adjacent to the kerb
ix GOFFS LANE, GOFFS OAK north side from a point 3.7 metres west of a point in	Parallel and adjacent to the kerb, in the lay-by

- line with the eastern flank wall of No.690 Goffs Lane, westwards for a distance of 5.8 metres.
- |      |  |   |
|------|--|---|
| x    | SALISBURY ROAD, HODDESDON north side from a point 1.2 metres west of a point in line with the eastern flank wall of No.13 Salisbury Road, westwards for a distance of 5.1 metres.  | Parallel and adjacent to the kerb                         |
| xi   | WHITLEY ROAD, HODDESDON south side from a point 4.5 metres west of a point in line with the eastern flank wall of No.13 Whitley Road, westwards for a distance of 5.5 metres.      | Parallel and adjacent to the kerb                         |
| xii  | GROVEDALE CLOSE, CHESHUNT south side from a point 5.5 metres east of a point in line with the western flank wall of No.20 Grovedale Close, eastwards for a distance of 5.3 metres. | Parallel and adjacent to the kerb, in the lay-by          |
| xiii | LILAC CLOSE, CHESHUNT southern end from a point 5.4 metres north of a point in line with the southern flank wall of No.4 Lilac Close, northwards for a distance of 4.8 metres.     | Lengthwise at 90° to the kerb, in a south/north direction |
| xiv  | KINGSLEY AVENUE, CHESHUNT north side from a point 5.5 metres west of a point in line with the eastern flank wall of No.9 Kingsley Avenue, westwards for a distance of 5 metres.    | Parallel and adjacent to the kerb                         |

## SCHEDULE 2

### Description of those parking places to be removed

BRISCOE ROAD, HODDESDON north side from a point in line with the boundary between Nos.42&44 Briscoe Road, eastwards for a distance of 6 metres.

CRANBORNE ROAD, CHESHUNT west side from a point in line with the boundary between Nos.3&4 Cranbourne Road, northwards for a distance of 6 metres.

CORNWALL CLOSE, WALTHAM CROSS east side from a point 1 metre north of a point in line with the northern flank wall of No.7 Cornwall Close, northwards for a distance of 5 metres.

WHITEHANDS CLOSE, HODDESDON north side from a point 8.5 metres west of a point in line with the eastern flank wall of Nos.17&18 Whitehands Close, westwards for a distance of 6.0 metres.

ASHBOURNE ROAD, BROXBOURNE north side from a point 2 metres east of a point in line with the western rear wall of No.142 High Road, westwards for a distance of 6 metres.

OLD ESSEX ROAD, HODDESDON north side from a point 3 metres east of a point in line with the western flank wall of Nos.54&56 Old Essex Road, eastwards for a distance of 6 metres.

SOUTHFIELD ROAD, WALTHAM CROSS south side from a point 0.3 metres west of a point in line with the boundary between Nos.78&80 Southfield Road, eastwards for a distance of 6 metres.

DARCY CLOSE, CHESHUNT north side, from a point 8 metres west of a point in line with the boundary between Nos.24&26 Darcy Close, westwards for a distance of 6 metres.

LORD STREET, HODDESDON north side from a point in line with the western flank wall of No.64 Lord Street, eastwards for a distance of 6 metres.

MACERS LANE, WORMLEY north side from a point in line with the boundary between Nos.23&25, westwards for a distance of 6 metres.

LAMPITS, HODDESDON east side from a point 4.8 metres north of a point in line with the northern flank wall of No.101 Lampits, northward for a distance of 2.5 metres.

ELDERBEK CLOSE, CHESHUNT west side from a point 13 metres south of the southern flank wall of Nos. 67-82 Elderbek Close, southwards for a distance of 2.5 metres.

HAWTHORN ROAD, HODDESDON north side from a point 0.7 metres east of a point in line with the eastern flank wall of No.8 Hawthorn Road, westwards for a distance of 6 metres.

IN WITNESS whereof the Common Seal of the Council of the Borough of Broxbourne has hereunto been affixed on this 4<sup>th</sup> January 2019.

The Common Seal of the COUNCIL OF THE BOROUGH OF BROXBOURNE was hereunto affixed in the presence of:-

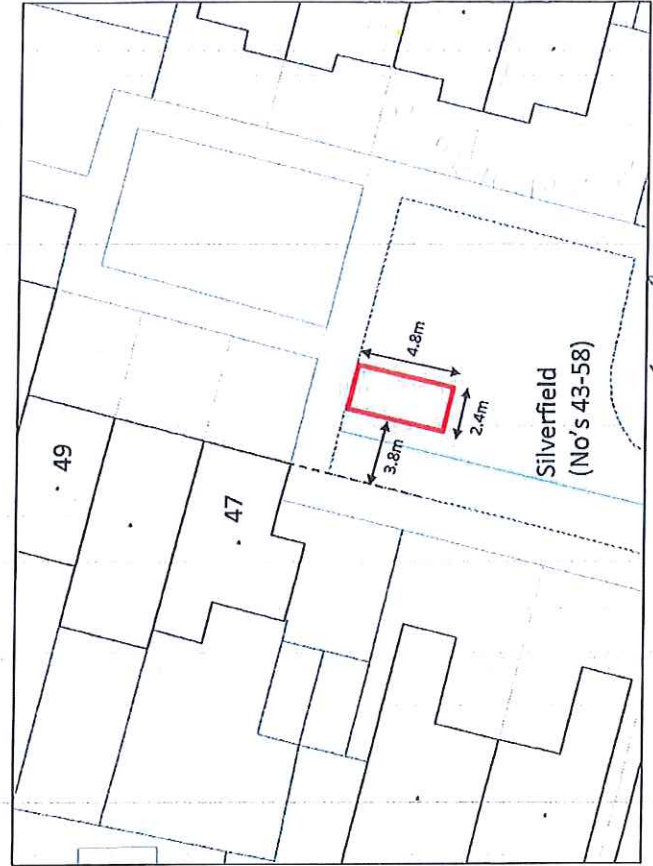
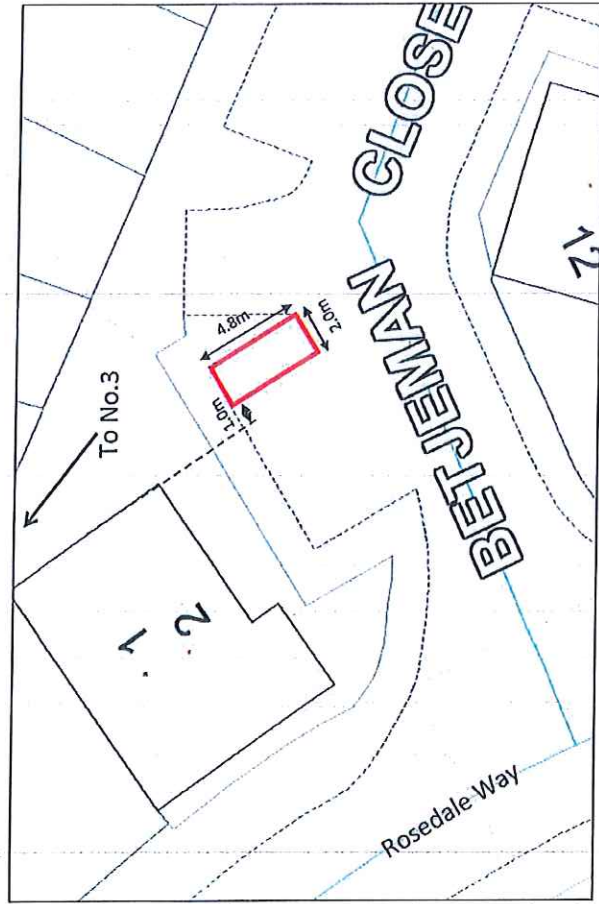
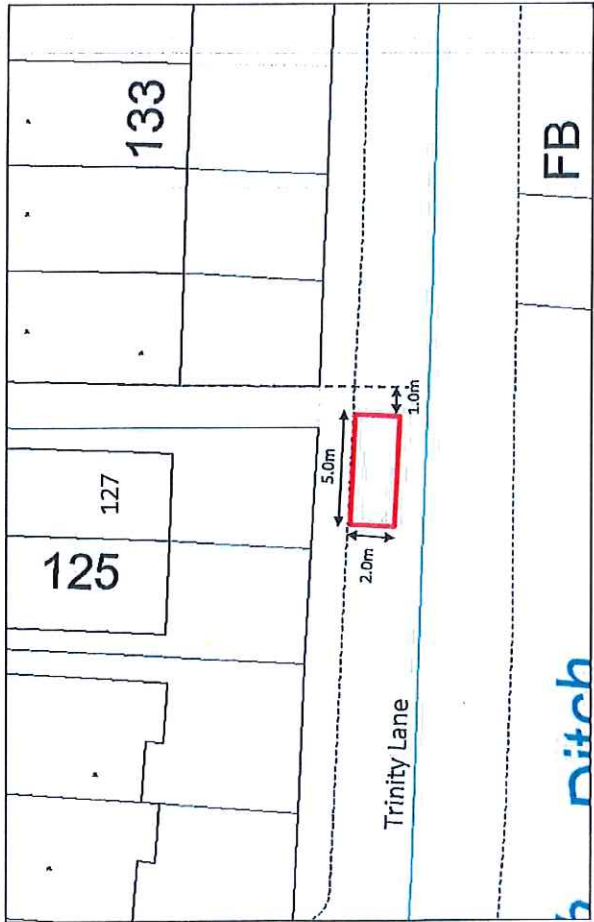


*M. Boake*  
Authorised Signatory

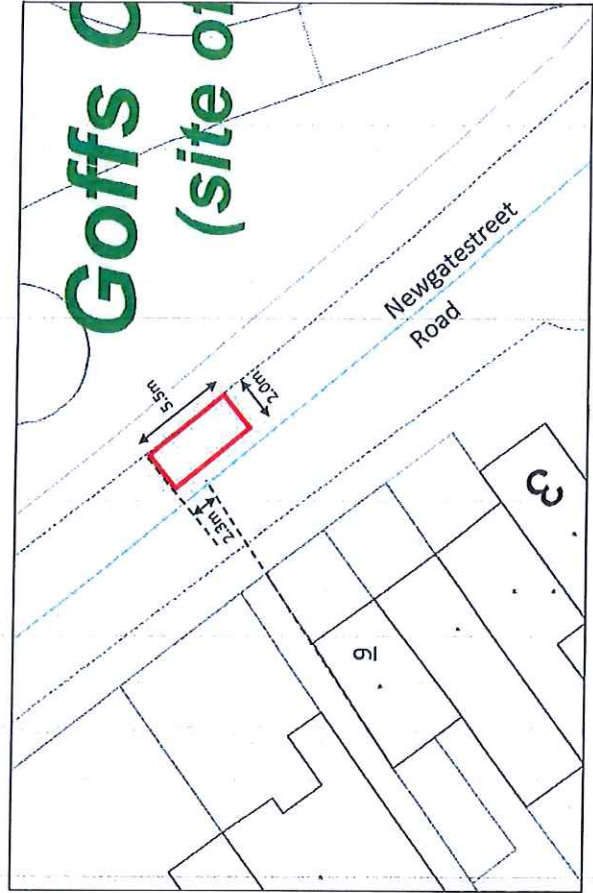
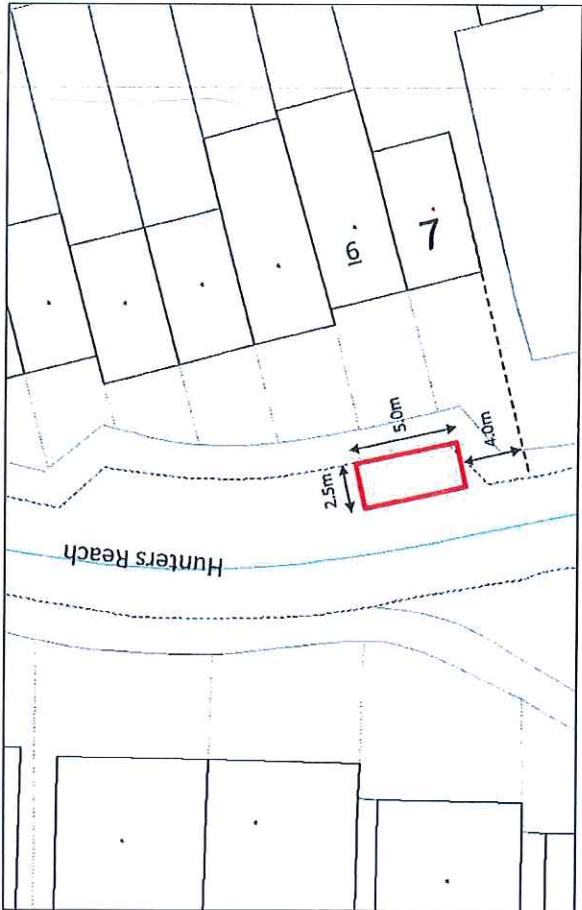
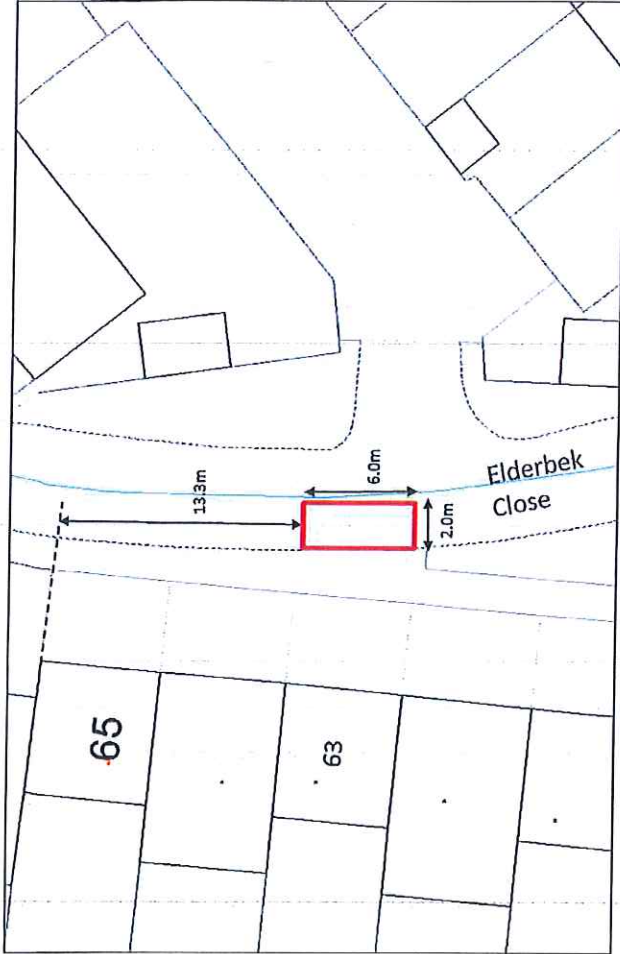
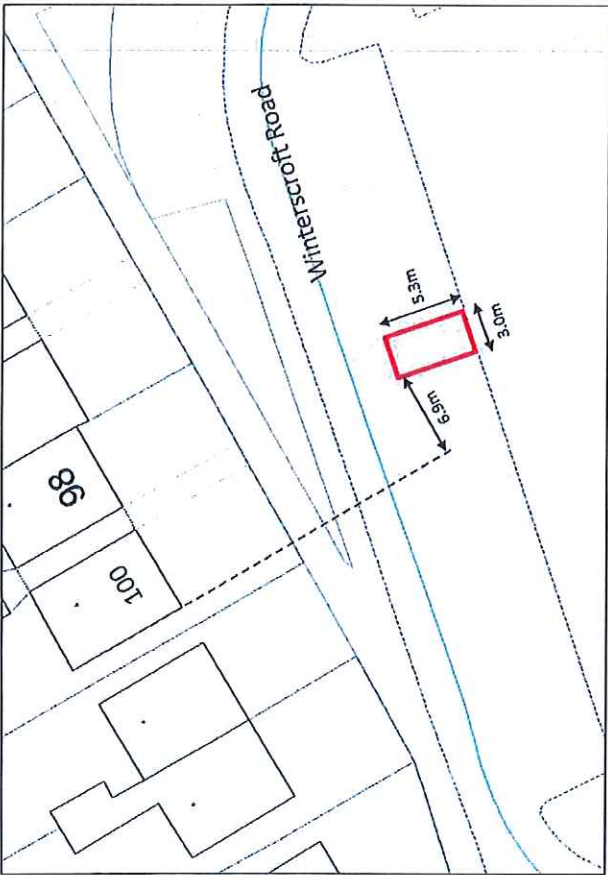
Dated 4<sup>th</sup> January 2019

ROAD TRAFFIC REGULATION ACT 1984

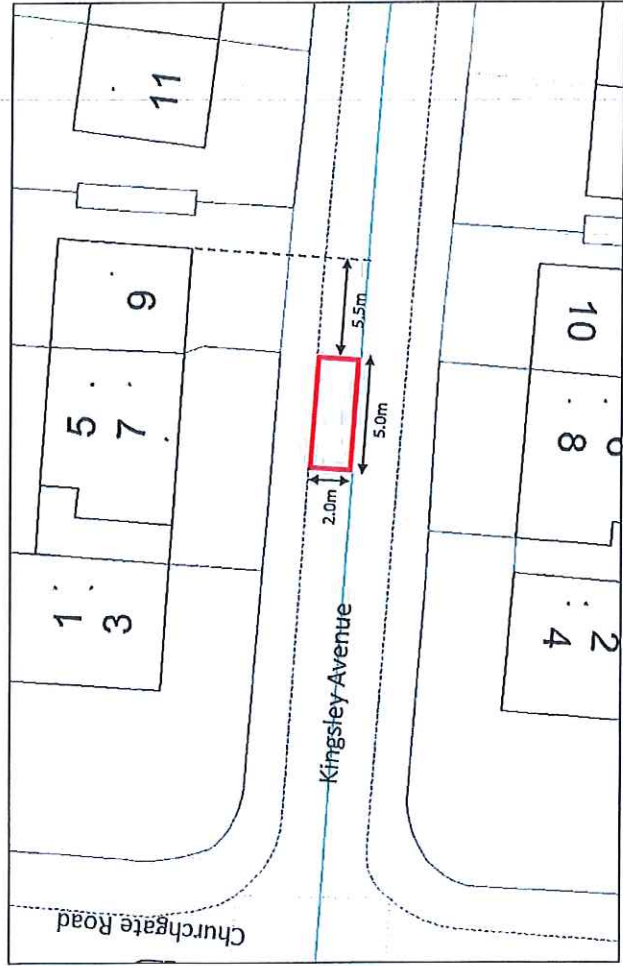
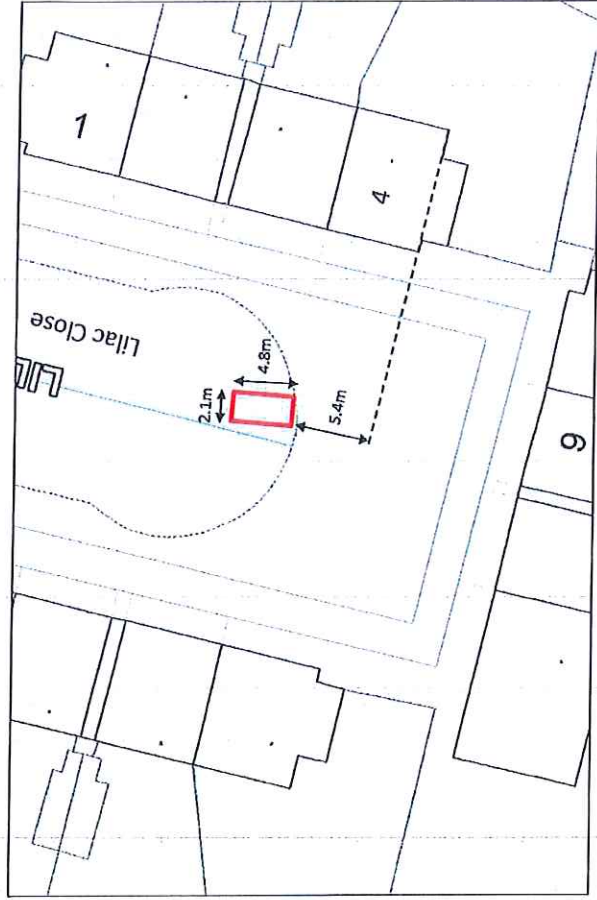
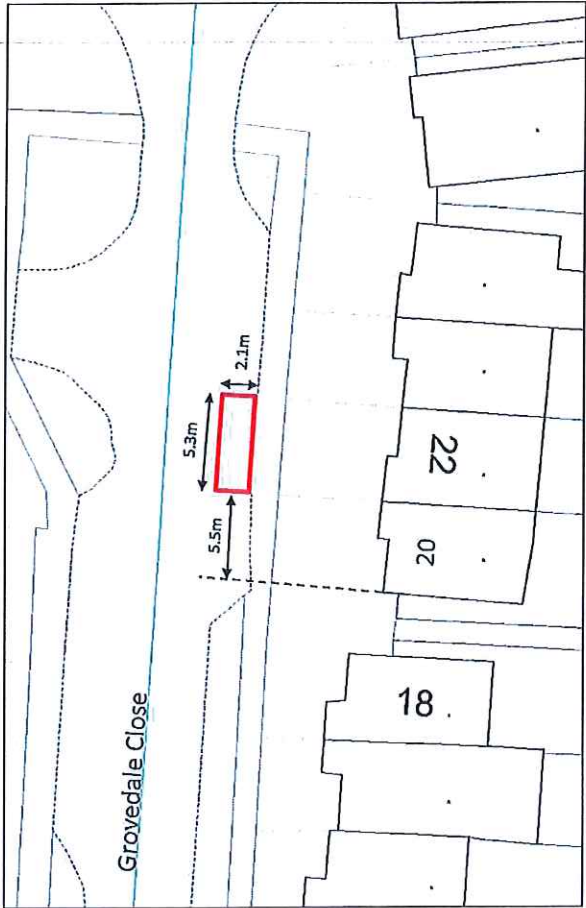
THE BOROUGH OF BROXBOURNE  
(VARIOUS ROADS) (DISABLED  
PERSON'S PARKING PLACES)  
ORDER No.2 2018



*M. Barber*  
**AUTHORISED SIGNATORY**







*M. Searles*  
**AUTHORISED SIGNATORY**

