

HERTFORDSHIRE COUNTY COUNCIL
ROAD TRAFFIC REGULATION ACT 1984

Date of Order: 11/03/2021
Order No: 8419

**THE HERTFORDSHIRE (BRYANSTONE ROAD, WALTHAM CROSS)
(PROHIBITION AND RESTRICTION OF WAITING) ORDER 2019**

The Hertfordshire County Council in exercise of their powers under Sections 1, 2 and 3 of the Road Traffic Regulation Act 1984 (which said Act of 1984 is hereinafter referred to as “the Act of 1984”), and Part IV of Schedule 9 of the Act of 1984 and of all other enabling powers and after consultation with the Chief Officer of Police in accordance with Part III of Schedule 9 of the Act of 1984, hereby make the following Order:-

1. This Order may be cited as “The Hertfordshire (Bryanstone Road, Waltham Cross) (Prohibition and Restriction of Waiting) Order 2019” and shall come into effect on Monday 22 March 2021.
2. Save as provided in Articles 4, 5 and 6 of this Order no person shall cause or permit any vehicle to wait at any time in those lengths of Bryanstone Road, Waltham Cross as specified in Schedule 1 to this Order.
3. Save as provided in Article 4 of this Order no person shall cause or permit any vehicle to load or unload between the hours of 8.00am to 9.30am and 4.30pm to 6.30pm Monday to Saturday inclusive in those lengths of Bryanstone Road, Waltham Cross as specified in Schedule 2 to this Order.
4. (1) Nothing in Articles 2 and 3 of this Order applies to the lengths of road restricted by those Articles (which said lengths of road are referred to in this Article as “the restricted area”) in relation to –
 - (a) a vehicle being used for Fire and Rescue, Ambulance or Police purposes.
 - (b) anything done with the permission of or at the direction of a Police Constable in uniform; or with permission of a Civil Enforcement Officer as defined by the Traffic Management Act 2004 and appointed by Broxbourne Borough Council.
 - (c) a vehicle which is prevented from proceeding by circumstances beyond the drivers control or which has stopped in order to avoid injury or damage to persons or property or when required to do so by law;
 - (d) a vehicle which is stationary in order that it may be used for one or more of the purposes specified in sub-Article (2) of this Article and which cannot reasonably be used for such a purpose without stopping in the restricted area;
 - (e) a marked vehicle which, whilst used by a universal service provider in the course of the provision of a universal postal service, is stationary only for so long as may be reasonably necessary for postal packets to be delivered or collected;

In this Article -

The expressions “universal service provider”, “provision of a universal postal Service” and “postal packet” shall bear the same meanings as in Section 65 of the Postal Services Act 2011.

(2) The “purposes” referred to in sub-Article (1)(d) of this Article are –

- (a) any operation involving building, demolition or excavation;
- (b) the removal of any obstruction to traffic;
- (c) the maintenance, improvement or reconstruction of a road;
- (d) constructing, improving, maintaining, or cleaning of any street furniture; or

- (e) the laying, erection, alteration, repair or cleaning of any sewer or of any main pipe or apparatus for the supply of gas, water or electricity, or of any telecommunications apparatus kept or installed for the purposes of a telecommunications code system or of any other telecommunications apparatus lawfully kept installed in any position.
5. Nothing in Article 2 of this Order applies to the lengths of road restricted by that Article (which said lengths of road are referred to in this Article as “the restricted area”) so as to render it unlawful to cause or permit any vehicle to wait between the hours of 9:30am and 4:30pm or between the hours of 6:30pm and 8:00am Monday to Saturday inclusive or at anytime on a Sunday only for so long as may be reasonably necessary –
- (a) to enable goods to be loaded on or unloaded from the vehicle from or to premises adjacent to the restricted area; or
- (b) to enable a passenger to board or alight and to load and unload any luggage.
6. (1) Nothing in Article 2 of this Order shall render it unlawful to cause or permit a disabled person’s vehicle which displays in the relevant position a disabled person’s badge and a parking disc, to wait between the hours of 9:30am and 4:30pm or between the hours of 6:30pm and 8:00am Monday to Saturday inclusive, or at any time on a Sunday, in the lengths of road specified in Schedule 1 of this Order for a period not exceeding 3 hours (not being a period separated by an interval of less than 1 hour from a previous period of waiting by the same vehicle in the same length of road).
- (2) In this Article -
- “disabled person’s vehicle” has the same meaning as in Section 142(1) of the Act of 1984;
- “disabled person’s badge” has the same meaning as given in Regulation 3(1) of The Local Authorities’ Traffic Orders (Exemptions for Disabled Persons) (England) Regulations 2000
- “parking disc” has the same meaning as given in Regulation 8(5) of The Local Authorities’ Traffic Orders (Exemptions for Disabled Persons) (England) Regulations 2000; and
- “relevant position” has the same meaning as given in Regulation 4 of The Local Authorities’ Traffic Orders (Exemptions for Disabled Persons) (England) Regulations 2000
7. The Interpretation Act 1978 shall apply for the interpretation of this Order as it applies for the interpretation of an Act of Parliament.
8. The provisions of the following Order are hereby revoked but only in so far as they are affected by the restrictions imposed by this Order:
- The Borough of Broxbourne (Control of Parking) (Consolidation) Order 2013 – map BRX0468 version 4.
9. The restrictions imposed by this Order shall be in addition to and not in derogation from any restriction or requirement imposed by any other regulations made or having effect as if made under the Act of 1984 or by or under any other enactment.

SCHEDULE

lengths of Bryanstone Road, Waltham Cross – no waiting at any time

- Bryanstone Road (north east side) from a point 7.5 metres south east of a point in line with the projected south east kerbline of Willow Tree Drive south eastwards for approximately 34 metres to a point 53 metres north west of a point in line with the projected north west kerbline of Latimer Court.
- (south west side) (a) from a point 5.5 metres south east of a point in line with the projected south east kerbline of Willow Tree Drive south eastwards for approximately 17.5

metres to a point in line with the projected north west kerblines of Bryanstone Road (south west arm).

- (b) from a point in line with the projected south east kerblines of Bryanstone Road (south west arm) south eastwards for approximately 30 metres to a point 31.5 metres north west of a point in line with the projected north west kerblines of Latimer Court.

(south west arm) (a) from a point in line with the projected south west kerblines of Bryanstone
(north west side) Road south westwards for approximately 87.5 metres to a point in line with the projected north east kerblines of the northern access road to private garages.

- (b) from a point in line with the projected south west kerblines of the northern access road leading to private garages westwards for 11.5 metres.

(south east side) (a) from a point in line with the projected south west kerblines of Bryanstone Road south westwards for approximately 59.5 metres to a point in line with the projected north east kerblines of the southern access road to car sales garage.

- (b) from a point in line with the projected south west kerblines of the southern access road to car sales garage south westwards for 35 metres.

Northern access road leading to private garages (both sides) from its junction with the north west kerblines of Bryanstone Road (south west arm) north westwards for 12.5 metres to its end.

Southern access road to car sales garage (north east side) from its junction with the south east kerblines of Bryanstone Road (south west arm) south eastwards for 5 metres.

(south west side) from its junction with the south east kerblines of Bryanstone Road (south west arm) south eastwards for 4 metres.

SCHEDULE 2

lengths of Bryanstone Road, Waltham Cross – no loading 8.00am to 9.30am and 4.30pm to 6.30pm Monday to Saturday

Bryanstone Road (north east side) from a point 7.5 metres south east of a point in line with the projected south east kerblines of Willow Tree Drive south eastwards for approximately 34 metres to a point 53 metres north west of a point in line with the projected north west kerblines of Latimer Court.

(south west side) (a) from a point 5.5 metres south east of a point in line with the projected south east kerblines of Willow Tree Drive south eastwards for approximately 17.5 metres to a point in line with the projected north west kerblines of Bryanstone Road (south west arm).

- (b) from a point in line with the projected south east kerblines of Bryanstone Road (south west arm) south eastwards for approximately 30 metres to a point 31.5 metres north west of a point in line with the projected north west kerblines of Latimer Court.

(south west arm) (a) from a point in line with the projected south west kerblines of Bryanstone
(north west side) Road south westwards for approximately 87.5 metres to a point in line with the projected north east kerblines of the northern access road to private garages.

- (b) from a point in line with the projected south west kerblines of the northern access road leading to private garages westwards for 11.5 metres.

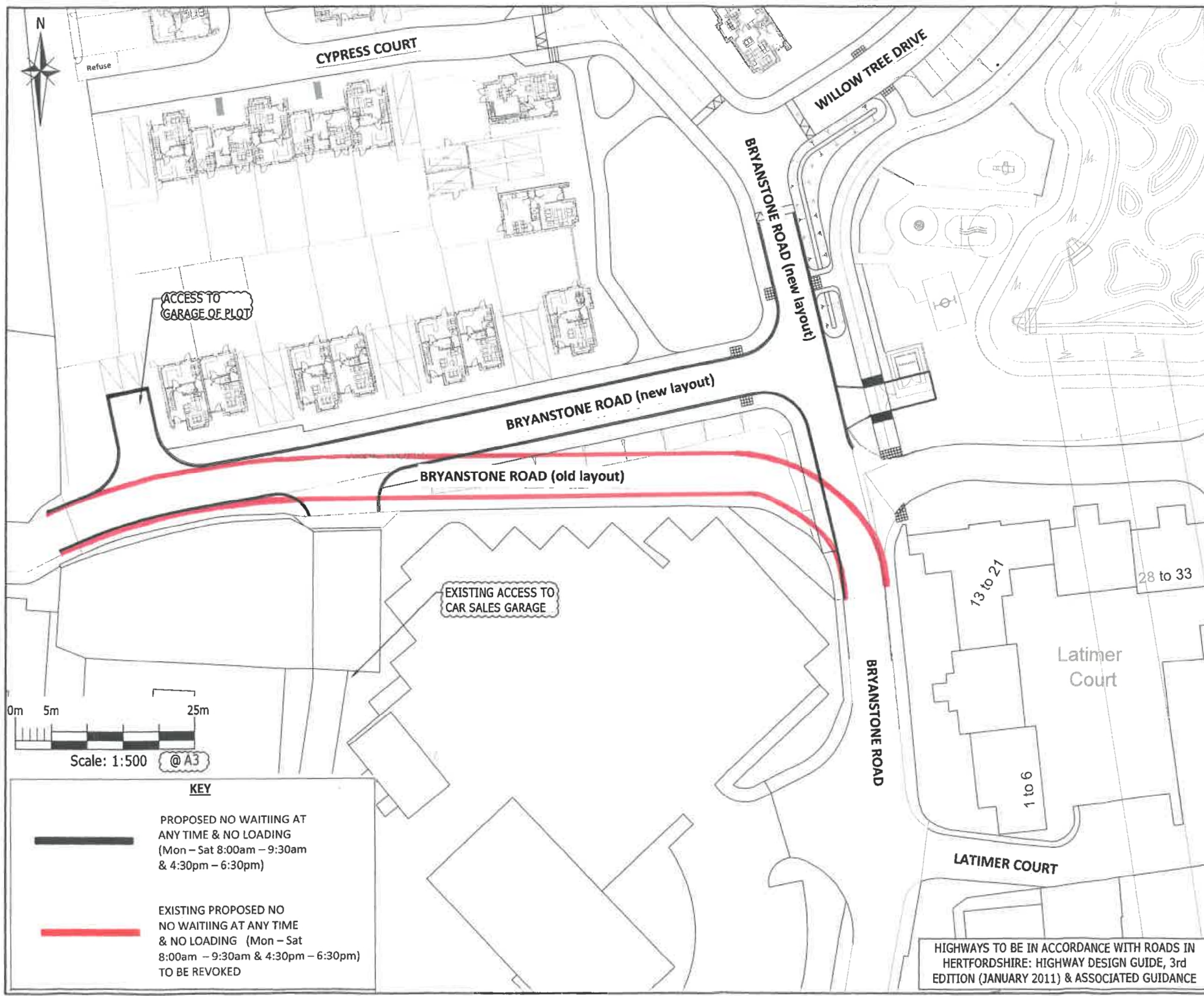
- (south east side) (a) from a point in line with the projected south west kerblines of Bryanstone Road south westwards for approximately 59.5 metres to a point in line with the projected north east kerblines of the southern access road to car sales garage.
- (b) from a point in line with the projected south west kerblines of the southern access road to car sales garage south westwards for 35 metres.
- Northern access road leading to private garages (both sides) from its junction with the north west kerblines of Bryanstone Road (south west arm) north westwards for 12.5 metres to its end.
- Southern access road to car sales garage (north east side) from its junction with the south east kerblines of Bryanstone Road (south west arm) south eastwards for 5 metres.
- (south west side) from its junction with the south east kerblines of Bryanstone Road (south west arm) south eastwards for 4 metres.

Signed:



Quentin Baker
Chief Legal Officer

Dated: 11/03/2021



- NOTES**
1. THIS DRAWING IS TO BE READ IN CONJUNCTION WITH THE RELEVANT SPECIFICATION AND ALL OTHER RELATED DRAWINGS ISSUED BY THE ENGINEER.
 2. DO NOT SCALE FROM THIS DRAWING. WORK FROM FIGURED DIMENSIONS ONLY.
 3. ALL DIMENSIONS SHOWN ON THIS DRAWING ARE IN METRES, UNLESS OTHERWISE STATED.
 4. ALL DIMENSIONS, LEVELS AND SURVEY GRID CO-ORDINATES ARE TO BE CHECKED ON SITE AND THE ENGINEER NOTIFIED IMMEDIATELY OF ANY DISCREPANCIES PRIOR TO THE COMMENCEMENT OF THE WORKS.
 5. NO DEVIATION FROM THE DETAILS SHOWN ON THIS DRAWING IS PERMITTED WITHOUT PRIOR PERMISSION FROM THE ENGINEER.
 6. THIS DRAWING IS BASED ON TOPOGRAPHICAL SURVEY BY GRYPHON SURVEYS, DRAWING NO. G4264-26 REV B, DATED 10/10/2012.
 7. THE PROPOSED SITE LAYOUT SHOWN IS PROVIDED BY FOURPOINT ARCHITECTS, DETAILED SITE PLAN DRAWINGS NO. P905/010-012 P-02, DATED 10/02/2017, AND RECEIVED 14/02/2017.
 8. THE CONTRACTOR SHALL UNDERTAKE SUCH MATERIALS TESTING AS INDICATED IN THE SPECIFICATIONS AND SHALL INCLUDE THE COST OF TESTING IN THE TENDER.
 9. ALL EXCAVATED MATERIAL WHERE NOT SUITABLE FOR REUSE SHALL BE DISPOSED OF AT AN APPROVED TIP OFF-SITE.
 10. WHERE LIGHTING IS TO BE REMOVED FROM A LIVE CARRIAGEWAY, REPLACEMENT LIGHTING SHOULD BE IN PLACE BEFORE OLD LIGHTING IS DECOMMISSIONED.

- CONSTRUCTION NOTES:**
1. ALL SOFT SPOTS AND VOIDS SHALL BE REMOVED BEFORE CONSTRUCTION AND REPLACED WITH SUITABLE FILL MATERIAL.
 2. ROAD FORMATION TO BE IN ACCORDANCE WITH CLAUSE 615 AND COMPACTED IN ACCORDANCE WITH TABLE THE REQUIREMENTS OF 6/4 OF THE SPECIFICATION FOR HIGHWAY WORKS - SERIES 600 EARTHWORKS.
 3. APPROVED RESIDUAL WEEDKILLER, WHICH DOES NOT CONTAIN ATRAZINE OR SIMAZINE, MUST BE APPLIED TO ALL FORMATIONS.
 4. ALL CONCRETE AND CEMENT MORTAR MUST BE SULPHATE RESISTING TO BS 4021.
 5. ALL CARRIAGEWAY MATERIALS SHALL BE SUPPLIED AND LAID IN ACCORDANCE WITH BS EN 13108-1.
 6. ALL MATERIALS IN CARRIAGEWAYS TO BE LAID BY MACHINE.
 7. MINIMUM DEPTH OF 450mm CONSTRUCTION IS REQUIRED FOR NON-FROST SUSCEPTIBLE MATERIAL.
 8. THE CONTRACTOR MUST VERIFY CBR VALUES ALONG EACH ACCESS ROAD AT 30m INTERVALS, THE RESULTS OF WHICH MUST BE SENT TO THE ENGINEER FOR CONFIRMATION OF THE CARRIAGEWAY CONSTRUCTION SHOWN ON THIS DRAWING, PRIOR TO COMMENCING THE WORKS.
 9. THE CONTRACTOR MUST BE AWARE OF THEIR OBLIGATIONS IN RESPECT OF THE RIGOROUS TESTING OF MATERIALS USED FOR CONSTRUCTION IN ACCORDANCE WITH APPENDIX D OF THE DEVELOPMENT CONSTRUCTION MANUAL.

CDM NOTES:
THE ATTENTION OF THE CLIENT, PRINCIPAL DESIGNER, PRINCIPAL CONTRACTOR, DESIGNERS AND CONTRACTORS IS DRAWN TO THE FOLLOWING POTENTIAL RISKS IN CONJUNCTION WITH THE PROPOSED ON-SITE AND OFF-SITE WORKS AS DESIGNED FOR THIS PROJECT.

1. WORKS IN THE VICINITY OF LIVE SERVICES INCLUDING GAS, ELECTRICITY AND BT WILL BE NECESSARY AND THE ADVICE OF ALL STATUTORY SERVICE COMPANIES MUST BE SOUGHT BEFORE ANY WORKS COMMENCE.
2. WORKS WITHIN AND ABUTTING THE EXISTING HIGHWAY WILL ENTAIL TRAFFIC HAZARDS AND ALL APPROPRIATE SAFETY MEASURES INCLUDING BARRIERS, SIGNS AND LIGHTING MUST BE UNDERTAKEN TO THE APPROVAL OF THE LOCAL AUTHORITY, THE HIGHWAY AUTHORITY AND THE POLICE DEPARTMENT.
3. HAZARDOUS MATERIALS INCLUDING CEMENT AND BITUMINOUS MATERIALS ARE SPECIFIED AND THE MANUFACTURERS ADVICE ON SAFE HANDLING PROCEDURES MUST BE OBTAINED AND MADE CLEAR TO ALL OPERATIVES.
4. THE CONTRACTOR WILL BE RESPONSIBLE FOR LOCATING ALL EXISTING SERVICES WITHIN THE VICINITY OF THE WORKS HAND DUG AND ENSURE THESE ARE PROTECTED THROUGHOUT THE DURATION OF THE WORKS. ALL UTILITY PLANT SHOULD BE CLEARLY MARKED ON THE GROUND PRIOR TO COMMENCEMENT OF THE WORKS.
5. THE CONTRACTOR MUST ENSURE ALL WORKING AREAS ARE FULLY SECURE.

SUBJECT TO APPROVAL

B	UPDATED WITH HCC COMMENTS	RM	PI	BB	11.06.18
A	SPATED IN ACCORDANCE WITH HCC SECTION 276 SESSION REVIEW 2 AND 3 COMMENTS	HB	PI	BB	14.05.18
Rev	Description	Drn	Chk	App	Date

ARDENT CONSULTING ENGINEERS

Suite 207
One Alle Street
London
E1 8DE

Tel: 020 7680 4088
Fax: 020 7488 3756

Web: www.ardent-ce.co.uk
E-mail: enquiries@ardent-ce.co.uk

worksafe consultant
www.ardentce.com

SSIP
SAFETY
SPECIALIST
INSTITUTE

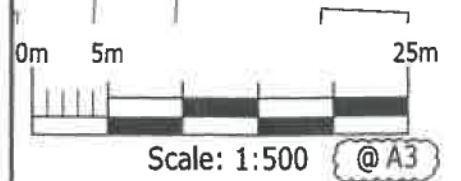
Client: **HIGGINS HOMES PLC**

Project Title: **BRITANNIA NURSERIES WALTHAM CROSS**

Drawing Title: **PROPOSED TRAFFIC REGULATION ORDER PLAN**

A3 Scale	Date	Designed by
1:500	18.08.2017	NJT
Drawn by	Checked by	Approved by
NJT	JC	TRF
Drawing Number	Rev	
N355-122	B	

HIGHWAYS TO BE IN ACCORDANCE WITH ROADS IN HERTFORDSHIRE: HIGHWAY DESIGN GUIDE, 3rd EDITION (JANUARY 2011) & ASSOCIATED GUIDANCE



KEY

PROPOSED NO WAITING AT ANY TIME & NO LOADING (Mon – Sat 8:00am – 9:30am & 4:30pm – 6:30pm)

EXISTING PROPOSED NO WAITING AT ANY TIME & NO LOADING (Mon – Sat 8:00am – 9:30am & 4:30pm – 6:30pm) TO BE REVOKED