

BOROUGH OF BROXBOURNE
ROAD TRAFFIC REGULATION ACT 1984

THE BOROUGH OF BROXBOURNE (VARIOUS ROADS)
(DISABLED PERSONS' PARKING PLACES) ORDER No. 2016

THE COUNCIL OF THE BOROUGH OF BROXBOURNE, pursuant to arrangements made with the Hertfordshire County Council under Section 19 of the Local Government Act 2000 and the Local Authorities (Arrangements for the Discharge of Functions) (England) Regulations 2012, and in exercise of its powers under Sections 32 and 35 of the Road Traffic Regulation Act 1984, (hereinafter called "the 1984 Act") and of all other enabling powers, and after consultation with the Chief Officer of Police in accordance with Part III of Schedule 9 of the Act of 1984, hereby make the following Order:

1(1) In this Order

"Disabled Person's Badge" has the same meaning as in The Local Authorities' Traffic Orders (Exemptions for Disabled Persons) (England) Regulations 2000.

"Disabled Person's Vehicle" has the same meaning as in Section 142(1) of the 1984 Act

"Driver", in relation to a vehicle waiting in a Parking Place, means the person driving the vehicle at the time it was left in the Parking Place

"Parking Place" means any part of a road authorised by this Order to be used as a parking place

(2) For the purposes of this Order a vehicle shall be regarded as displaying a Disabled Person's Badge in the relevant position if:

- (i) in the case of a vehicle fitted with a dashboard or fascia panel, the badge is exhibited thereon so that the serial number and the date of expiry of the badge is legible from outside the vehicle; or
- (ii) in the case of a vehicle not fitted with a dashboard or fascia panel, the badge is exhibited in a conspicuous position on the vehicle so that the serial number and the date of expiry of the badge is legible from outside the vehicle.

2(1) Those parts of the roads specified in Column 1 of Schedule 1 and shown for identification purposes only in the plan in the Schedule to this Order are authorised to be used in a position specified in Column 2 of the said Schedule 1 and subject to the following provisions of this Order, as Parking Places at any time for Disabled Person's Vehicles which display in the relevant position a Disabled Person's Badge.

(2) Nothing in paragraph (1) of this Article shall restrict the power of the Council, for preventing obstruction of the roads, by order, or by notice on the occasion of any public procession, rejoicing or illumination, or when the roads are thronged or liable to be obstructed, to close the Parking Place.

3 Where in Column 1 of Schedule 1 to this Order a Parking Place is described as available for a Disabled Person's Vehicle which displays in the relevant position a Disabled Person's Badge, the Driver of a vehicle shall not permit it to wait in that Parking Place unless it is:

- (a) a Disabled Person's Vehicle on which is displayed in the relevant position a Disabled Person's Badge, and
- (b) wholly within the limits of the Parking Place.

- 4 A Driver of a vehicle shall not use a Parking Place:-
- (a) so as unreasonably to prevent access to any premises adjoining the road, or the use of the road by other persons, or so as to be a nuisance;
 - (b) when for preventing obstruction of the road the Council shall by order or by notice made on the occasion of any public procession, rejoicing or illumination or when the roads are thronged or liable to be obstructed have closed that Parking Place and exhibited notice of such closing on or near the Parking Place.
- 5 The Driver of a motor vehicle using a Parking Place shall stop the engine as soon as the vehicle is in a position in the Parking Place, and shall not start the engine except when about to change the position of the vehicle in or to depart from the Parking Place.
- 6 No person shall use a vehicle, while it is in a Parking Place, in connection with the sale of any article to persons in or near the Parking Place or in connection with the selling or offering for hire of his skill or service.
- 7 Subject to the provision hereto, when a vehicle is left in a Parking Place in contravention of any of the provisions contained in Articles 3 and 4 of this Order a person authorised in that behalf by the Council may remove the vehicle or arrange for it to be removed from that Parking Place provided that when a vehicle is waiting in a Parking Place in contravention of the provisions of Articles 3 and 4 of this Order, a person authorised in that behalf by the Council may alter or cause to be altered the position of the vehicle in order that its position shall comply with that provision.
- 8 Any person removing a vehicle or altering its position by virtue of Article 7 of this Order may do so by towing or driving the vehicle or moving the vehicle in such other manner as he may think necessary and may take such measures in relation to the vehicle as he may think necessary to enable him to remove it or alter its position, as the case may be.
- 9 When a person authorised by the Council removes or makes arrangements for the removal of a vehicle from a Parking Place by virtue of Article 7 of this Order, he shall make such arrangements as may be reasonably necessary for safe custody of the vehicle.
- 10 The lengths of road specified in Schedule 2 of this Order are no longer authorised for the sole parking of disabled persons vehicles.
- 11 The provisions of The Borough of Broxbourne (Control of Parking) (Consolidation) Order 2013 ("the 2013 Order") are hereby revoked but only in so far as they are affected by the restrictions imposed by this Order.
- 12 Paragraph 3 of Schedule 1 of the Borough of Broxbourne (Various Roads) (Disabled Persons Parking Places) Order No. 2 2013.
- 13 Paragraph 6 of Schedule 1 of the Borough of Broxbourne (Various Roads) (Disabled Persons Parking Places) Order No. 2 2014.
- 14 Paragraph 16 of Schedule 1 of the Borough of Broxbourne (Various Roads) (Disabled Persons Parking Places) Order No. 2015 is revoked.
- 15 Paragraph 16 of Schedule 1 of the Borough of Broxbourne (Various Roads) (Disabled Persons Parking Places) Order No. 2 2015 is revoked.

- 16 This Order shall come into operation on 9 June 2016 and may be cited as the Borough of Broxbourne (Various Roads) (Disabled Persons' Parking Places) Order No.2016.

SCHEDULE 1

Column 1	Column 2
Description of the Parking Place	Position in which the vehicle may wait
ST AUGUSTINES DRIVE, BROXBOURNE west side from a point in line with the northern flank wall of 9 St Augustines Drive southward for a distance of 6.0m.	Parallel and adjacent to the kerb
BIRCHFIELD ROAD, CHESHUNT west side from a point 1.5m south of a point in line with the southern flank wall of No. 36 & 38 Birchfield Road northward for a distance of 6.0m.	Parallel and adjacent to the kerb
BIRCHFIELD ROAD, CHESHUNT south side from a point 1m west of a point in line with the boundary between Nos.100 & 102 Birchfield Road eastward for a distance of 6.0m.	Parallel and adjacent to the kerb
BRAMPTON CLOSE, CHESHUNT west side from a point in line with the boundary between Nos.18 & 19 Brampton Close northward for a distance of 5.0m	Parallel and adjacent to the kerb
COLLETT CLOSE, CHESHUNT west side from a point 2.5m north of a point in line with the northern flank wall of No.10 Breeze Terrace, Davison Drive northward for a distance of 2.5m	Lengthwise at 90° to the kerb in a East / West direction
DEWHURST ROAD, CHESHUNT east side from a point in line with the boundary between Nos.132 & 134 Dewhurst Road southward for a distance of 6.0m.	Parallel and adjacent to the kerb
HAWTHORNE AVENUE, CHESHUNT west side from a point 2.3m north of a point in line with the boundary between Nos. 37 & 39 Hawthorne Avenue southward for a distance of 6.0m.	Parallel and adjacent to the kerb
MCGREDY, CHESHUNT west side from a point 1.9m north of a point in line with the southern flank wall of No.17 McGredy southwards for a distance of 2.8m	Lengthwise at 90° to the kerb in a East / West direction
OUSDEN CLOSE, CHESHUNT south side from a point 1.0m west of a point in line with the eastern flank wall of Nos.46 & 48 Ousden Close westward for a distance of 2.5m.	Lengthwise at 90° to the kerb in a North / South direction

RUSSELLS RIDE, CHESHUNT east side from a point 1.9m south of a point in line with the northern flank wall of No.93 Russells Ride southward for a distance of 2.4m.

Lengthwise at 90° to the kerb in a East / West direction

WHEATCROFT, CHESHUNT south side from a point in line with the western flank wall of Nos. 11 & 14 Wheatcroft eastwards for a distance of 2.4m.

Lengthwise at 90° to the kerb in a North / South direction

THE DRIVE, GOFFS OAK east side from a point 3m north of a point in line with the southern flank wall of No. 48 The Drive northward for a distance of 2.4m.

Lengthwise at 90° to the kerb in a East / West direction

NURSERY ROAD, HODDESDON south side from a point 1.5m east of a point in line with the western flank wall of No. 17 Nursery Road eastward for a distance of 6.0m.

Parallel and adjacent to the kerb

ROSELANDS AVENUE, HODDESDON south side from a point in line with the boundary between of Nos.79 & 81 Roselands Avenue eastward for a distance of 2.7m.

Lengthwise at 90° to the kerb in a North / South direction

GALLOWAY CLOSE, TURNFORD east side from a point in line with the northern flank wall of No. 3 Shire Close northward for a distance of 2.85m.

Lengthwise at 90° to the kerb in a East / West direction

PERRAM CLOSE, TURNFORD west side from a point 0.8m south of a point in line with the boundary between Nos. 21/22 & 23/24 Perram Close northward for a distance of 2.5m.

Lengthwise at 90° to the kerb in a East / West direction

HURST DRIVE, WALTHAM CROSS east side from a point in line with the boundary between Nos. 44 & 46 Hurst Drive northward for a distance of 6.0m.

Parallel and adjacent to the kerb

NORTHFIELD ROAD, WALTHAM CROSS west side from a point in line with the boundary between Nos. 67 & 69 Northfield Road northward for a distance of 6.0m.

Parallel and adjacent to the kerb

WESTFIELD ROAD, WALTHAM CROSS east side from a point in line with the southern front wall of No. 4 Westfield Road southward for a distance of 5.0m.

Parallel and adjacent to the kerb

HIGH ROAD, WORMLEY east side from a point 2.2m south of the boundary between Nos. 8/10 & 12/14 High Road northward for a distance of 6.0m.

Parallel and adjacent to the kerb

SCHEDULE 2

Description of those parking places to be removed

Chadwell Avenue, Cheshunt north side from a point 0.7m west of a point in line with the boundary between Nos. 7 & 9 Chadwell Avenue eastward for a distance of 6 metres.

Delamare Road, Cheshunt east side from a point in line with the boundary between Nos.15/16 & 17/18 Delamare Road southwards for a distance of 5.5 metres.

Downfield Road, Cheshunt north side from a point 6.25m east of a point in line with the western flank wall of Nos. 127 – 135 Downfield Road eastwards for a distance of 6 metres

Hargreaves Avenue, Cheshunt east side from a point in line with the boundary between Nos. 3 & 5 Hargreaves Avenue northwards for a distance of 6 metres.

Hargreaves Close, Cheshunt south side from a point 19m west of a point in line with the eastern flank wall of No.3 Hargreaves Close westward for a distance of 2.8 metres.

Hargreaves Close, Cheshunt south side from a point in line with the boundary between Nos.5 & 6 Hargreaves Close westward for a distance of 2.8 metres.

Harkness, Cheshunt west side from a point in line with the southern flank wall of No. 74 Harkness northward for a distance of 2.5 metres.

Limes Road, Cheshunt north side from a point 1.5m east of the boundary between Nos. 37 & 39 Limes Road westwards for a distance of 5 metres.

Lower Meadow, Cheshunt east side from a point in line with the boundary between Nos. 44 & 45 Lower Meadow southwards for a distance of 6 metres.

Rosedale Way, Cheshunt north side from a point 1.5m east of a point in line with the eastern flank wall of No.14 Harkness eastward for a distance of 6 metres

Smarts Green, Cheshunt southwest side from a point 4.7m northwest of a point in line with the boundary between Nos. 45 & 47 Smarts Green north-westwards for a distance of 2.4 metres.

Barclay Court, Hoddesdon south side from a point 20.5m east of a point in line with the eastern wall of Nos. 25 - 36 Barclay Court eastwards for a distance of 2.4 metres.

Glenester Close, Hoddesdon south side from a point in line with boundary wall between Nos. 34 & 36 Glenester Close westward for a distance of 6 metres.

Hawthorn Road, Hoddesdon north side from a point in line with the boundary between Nos. 40 & 42 Hawthorn Road westwards for a distance of 6 metres.

Lord Street, Hoddesdon south side from a point 1m west of a point in line with the eastern flank wall of Friends Hall, Lord Street westwards for a distance of 8 metres.

Lord Street, Hoddesdon north side from a point in line with the boundary between Nos. 70 & 72 Lord Street eastwards for a distance of 6 metres

Old Highway, Hoddesdon east side from a point in line with the boundary between Nos. 110 & 112 Old Highway southward for a distance of 6 metres

Rowan Drive, Turnford south side from a point in line with the boundary between Nos. 89 &

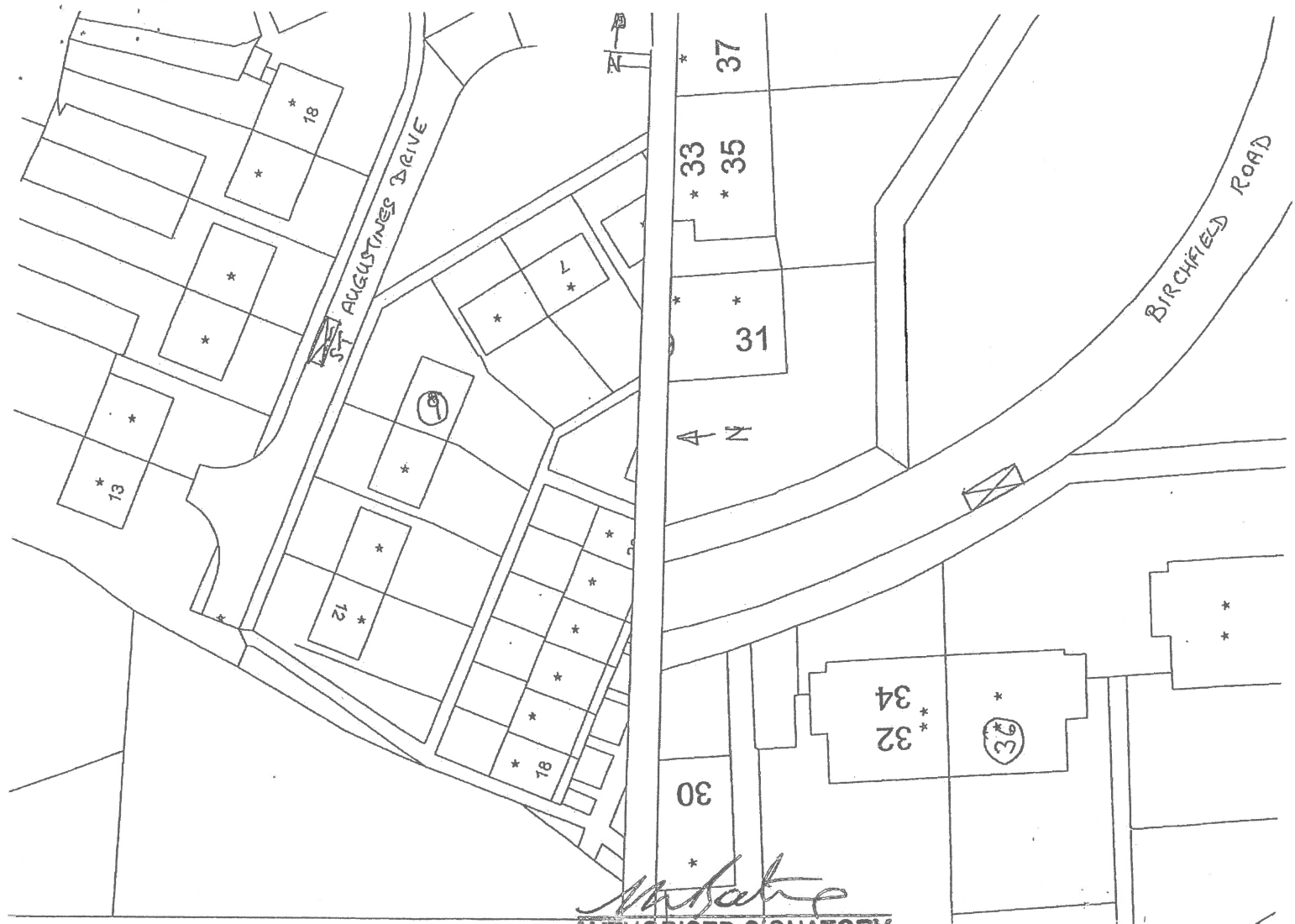
91 Rowan Drive westwards for a distance of 6 metres.

Berwick Close, Waltham Cross east side from a point 3.5m south of a point in line with the northern flank wall of No.5 Berwick Close southwards for a distance of 6 metres.

Cecil Road, Waltham Cross south side from a point 1m west of a point in line with the boundary between Nos. 10 & 12 Cecil Road eastwards for a distance of 6 metres.

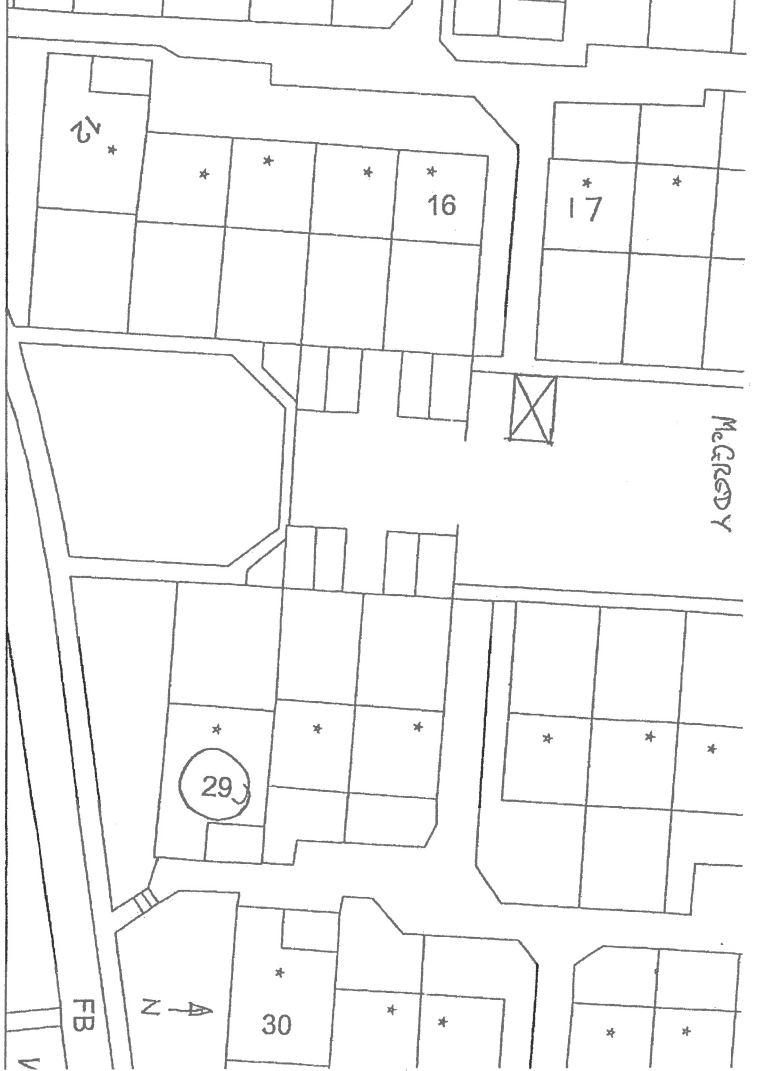
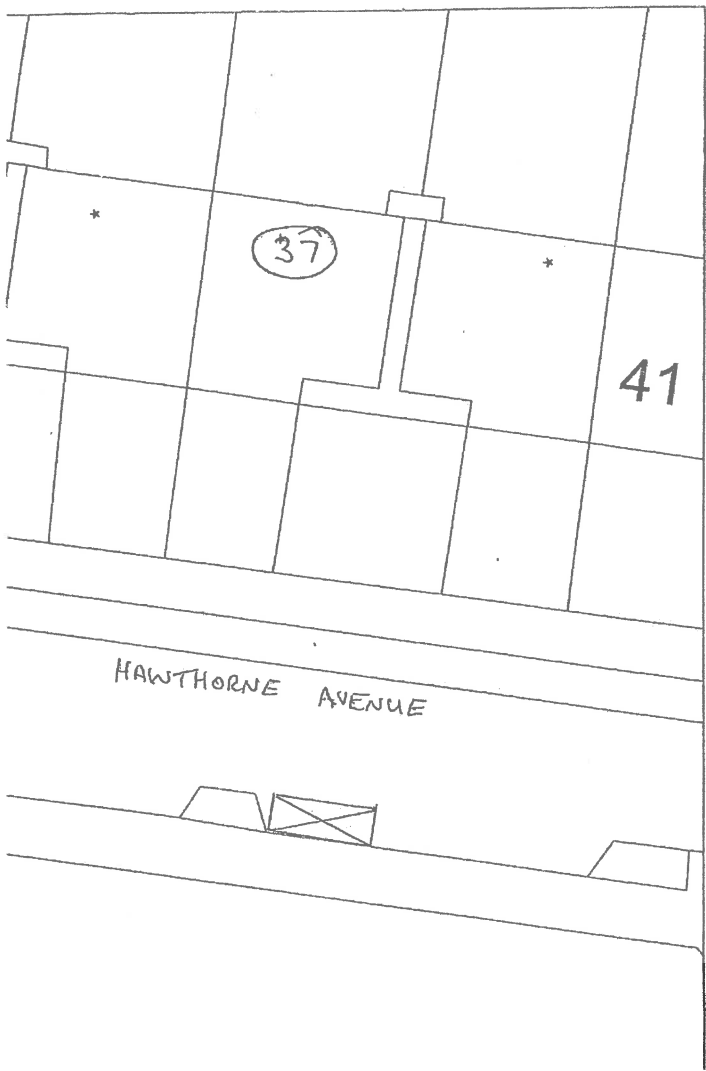
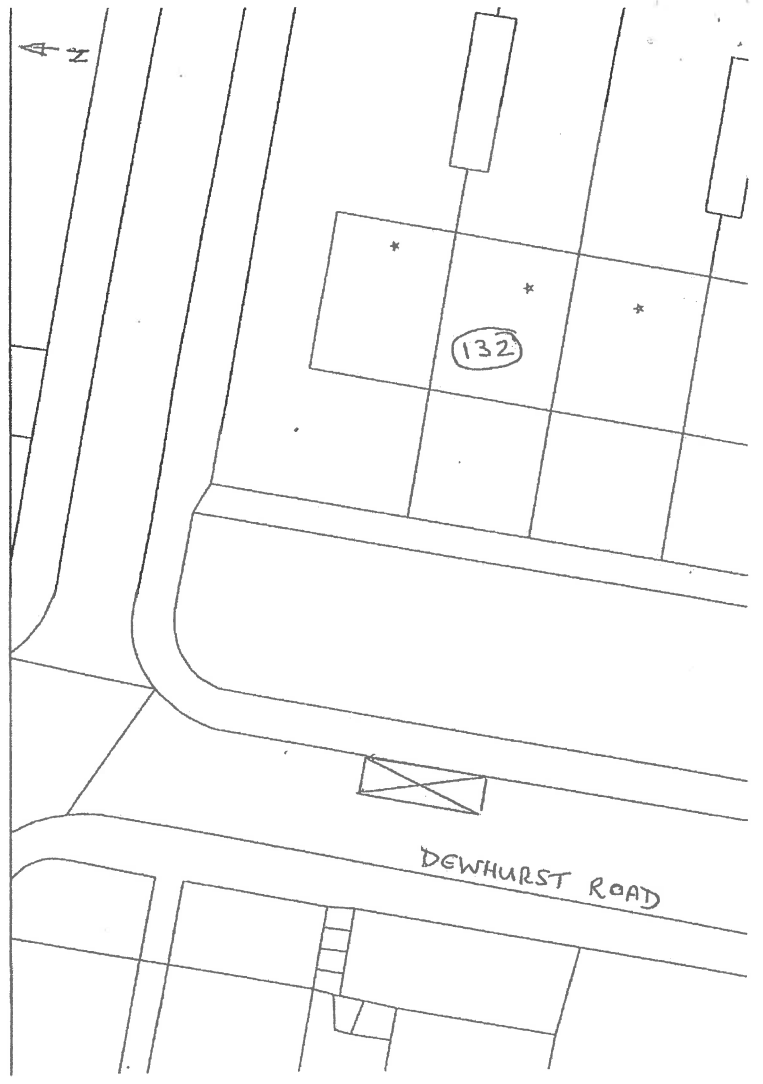
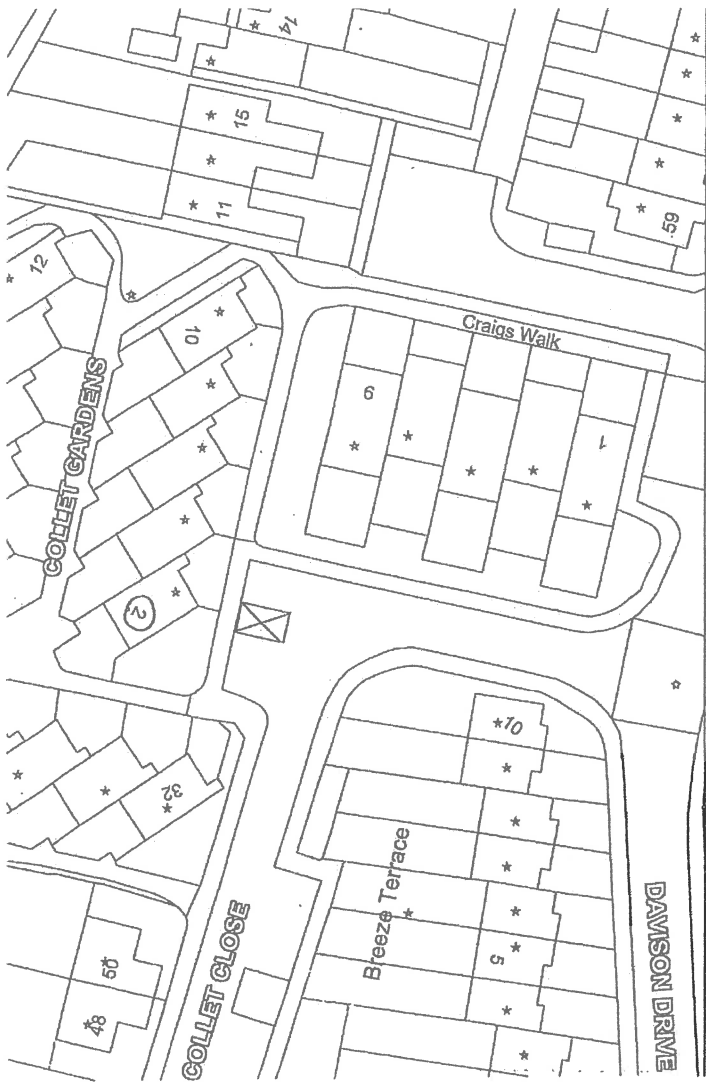
Kenworth Close, Waltham Cross south side from a point 10m north west of a point in line with the western most flank wall of No.12 Kenworth Close north-westward for a distance of 6 metres

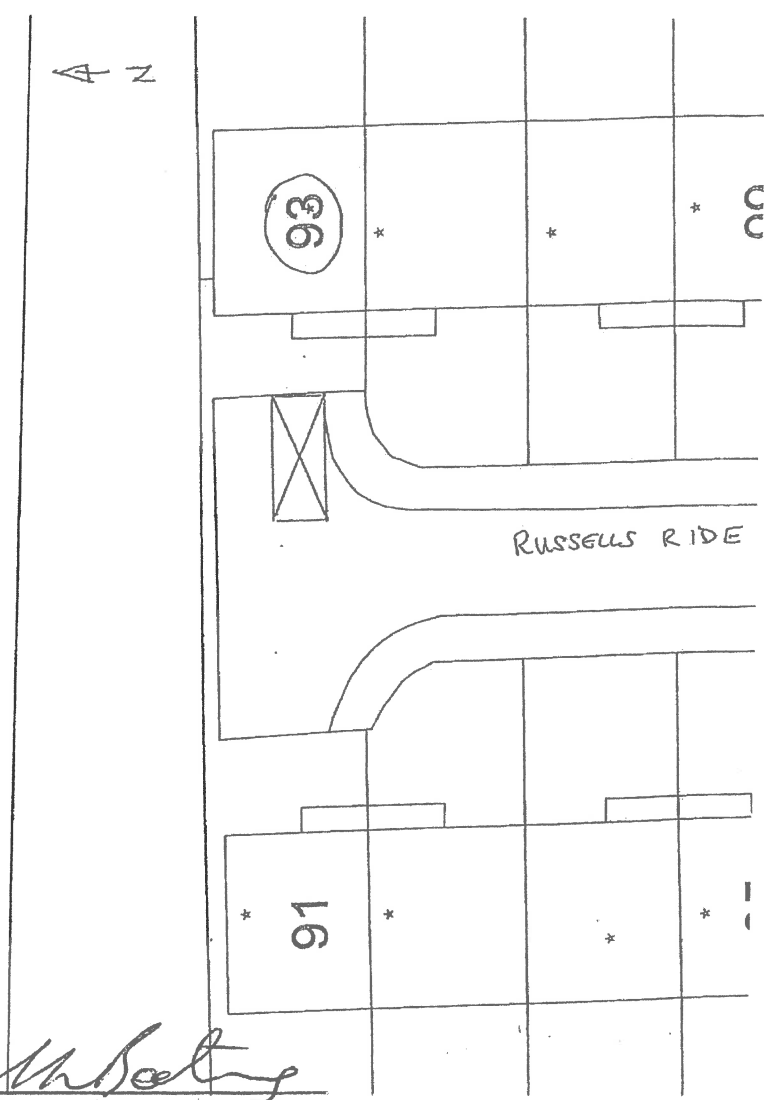
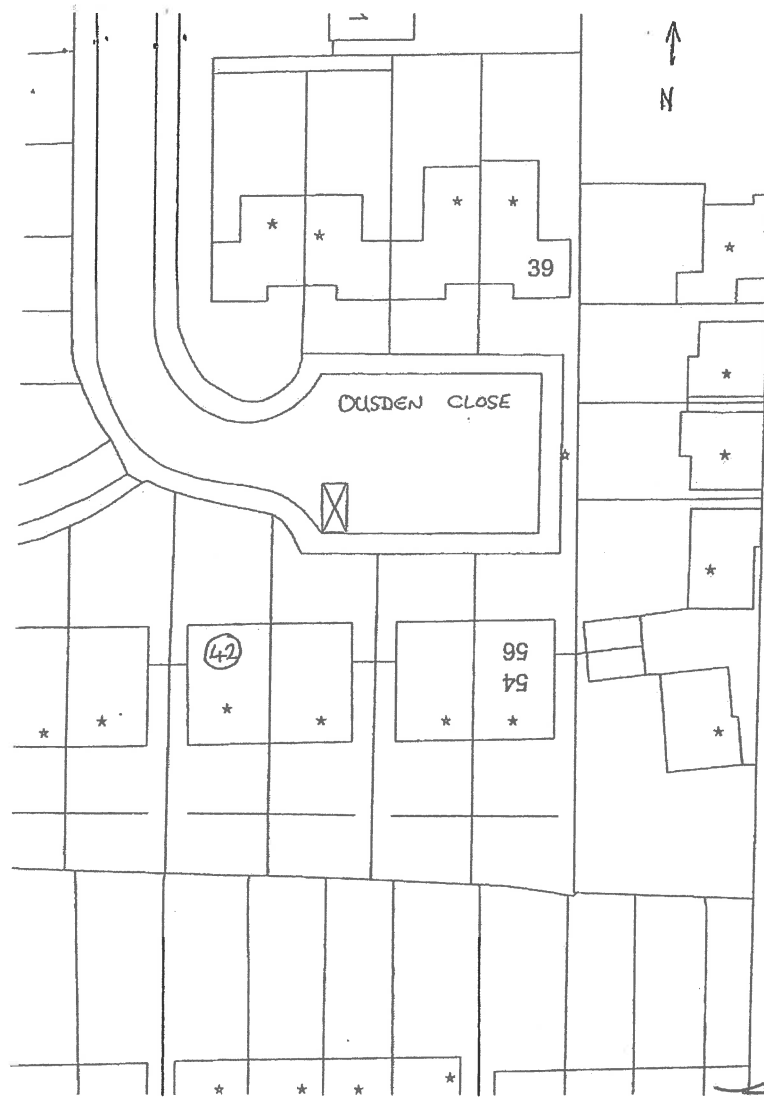
King Edward Road, Waltham Cross north side from a point 3.5m west of a point in line with the boundary between Nos.12 & 14 King Edward Road eastward for a distance of 5.5 metres.



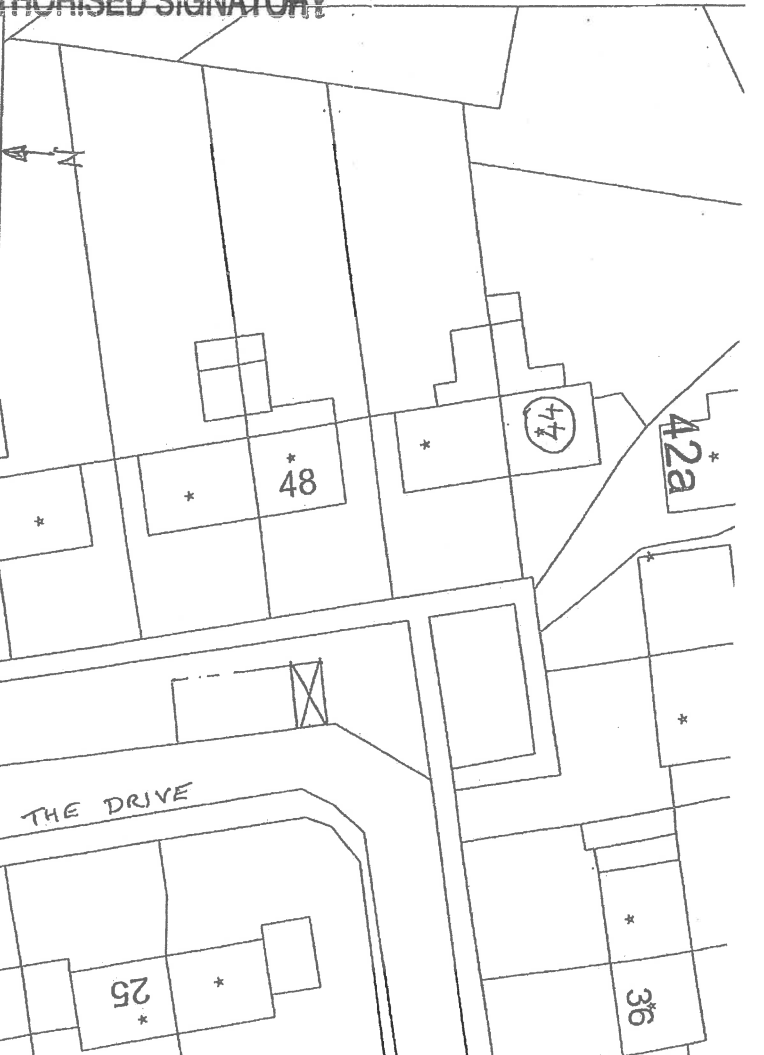
M. Baker
AUTHORISED SIGNATORY

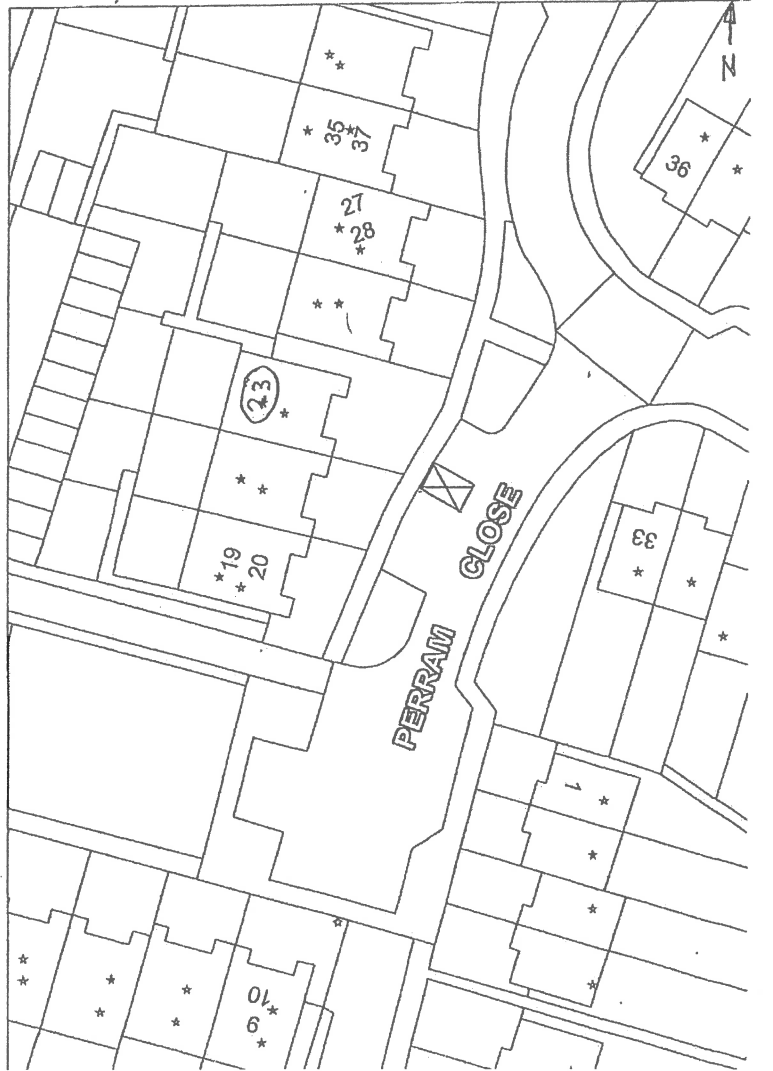
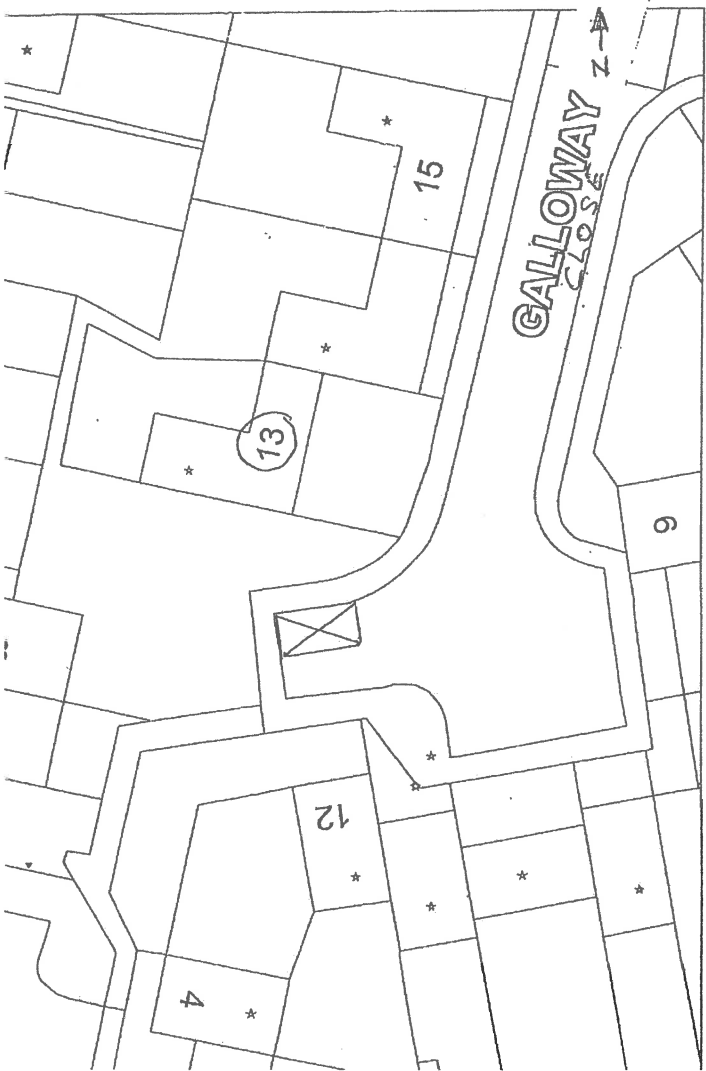
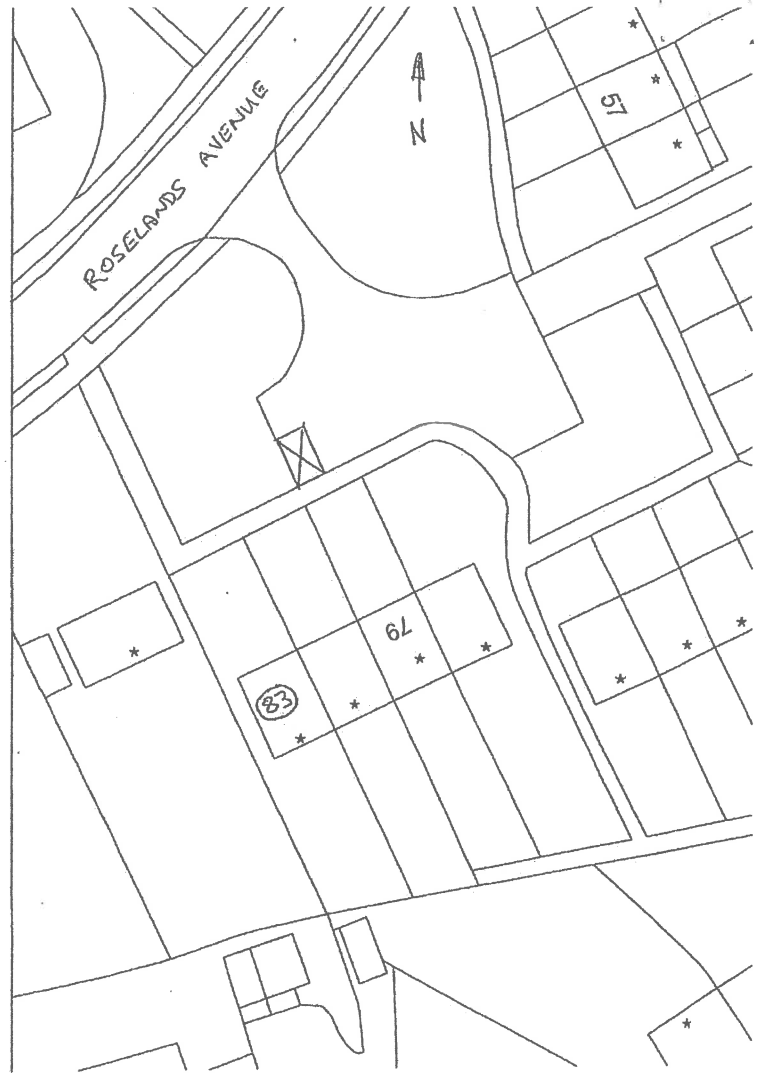
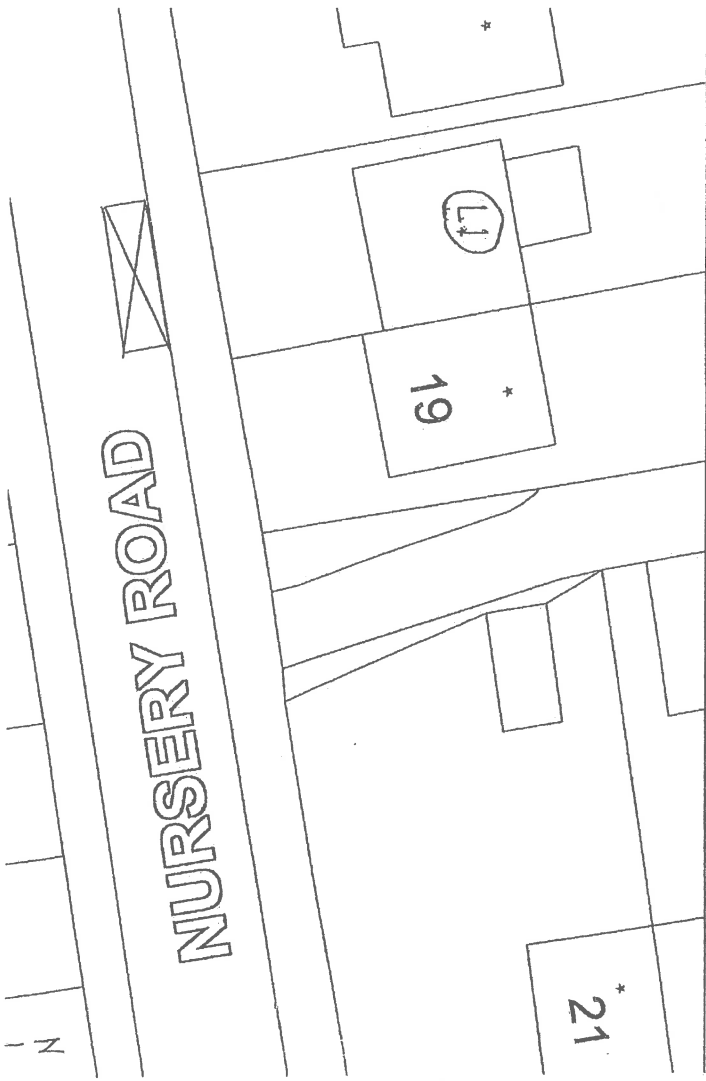


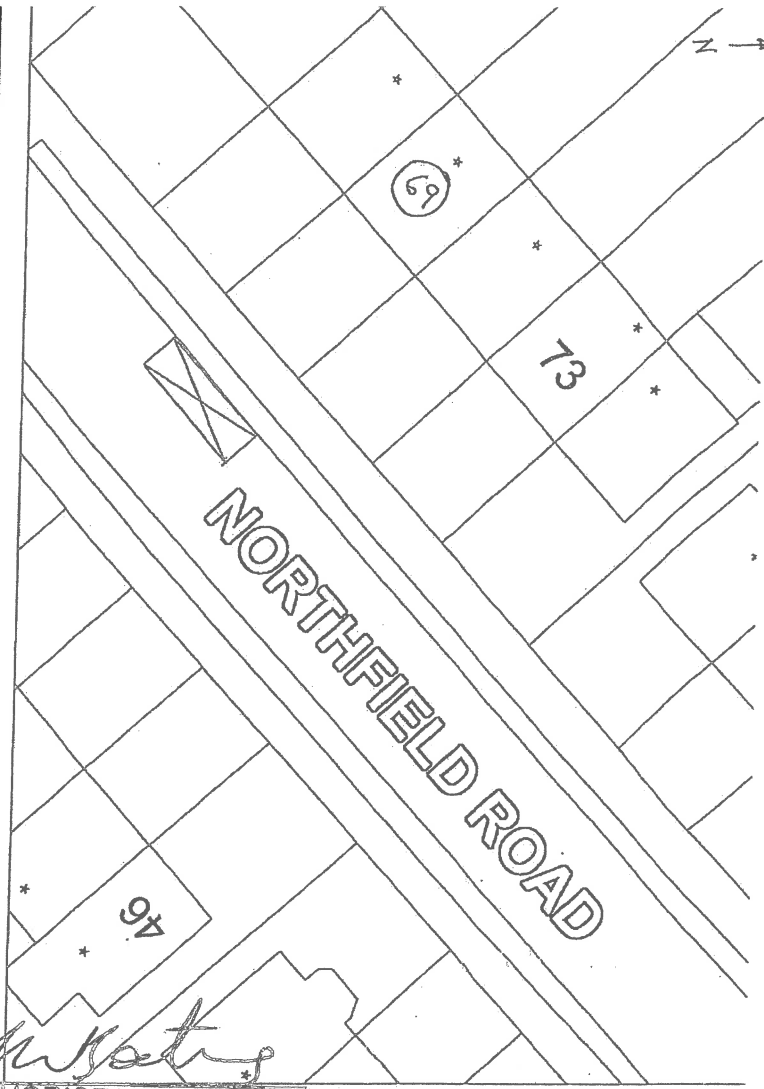
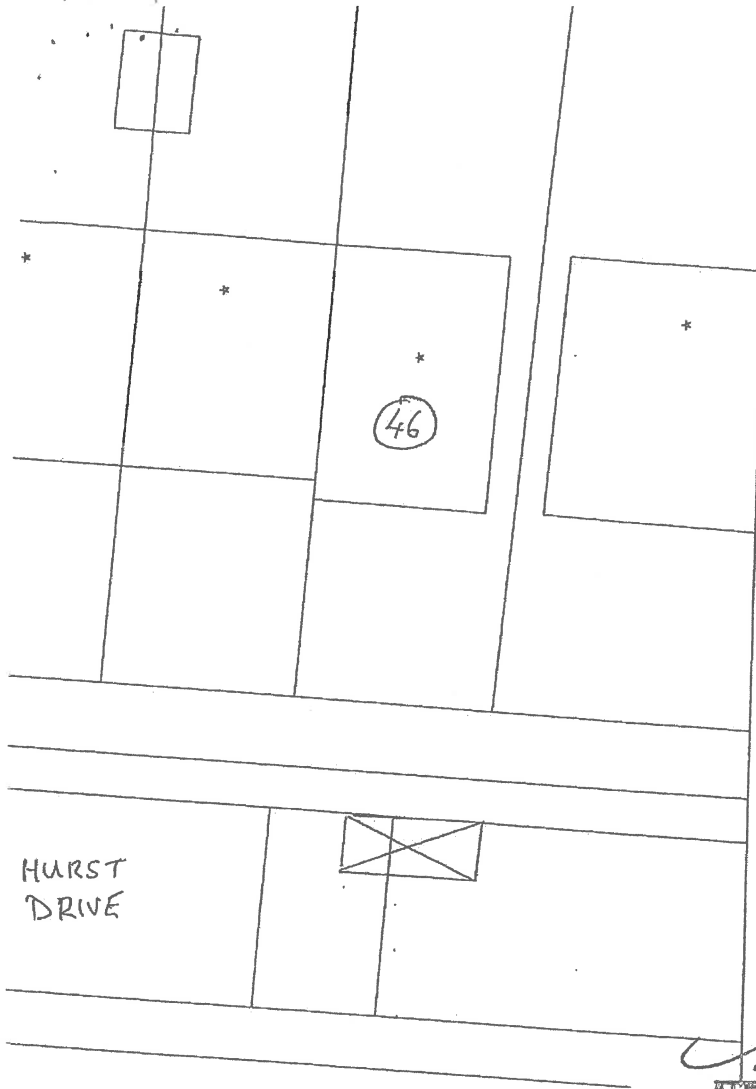




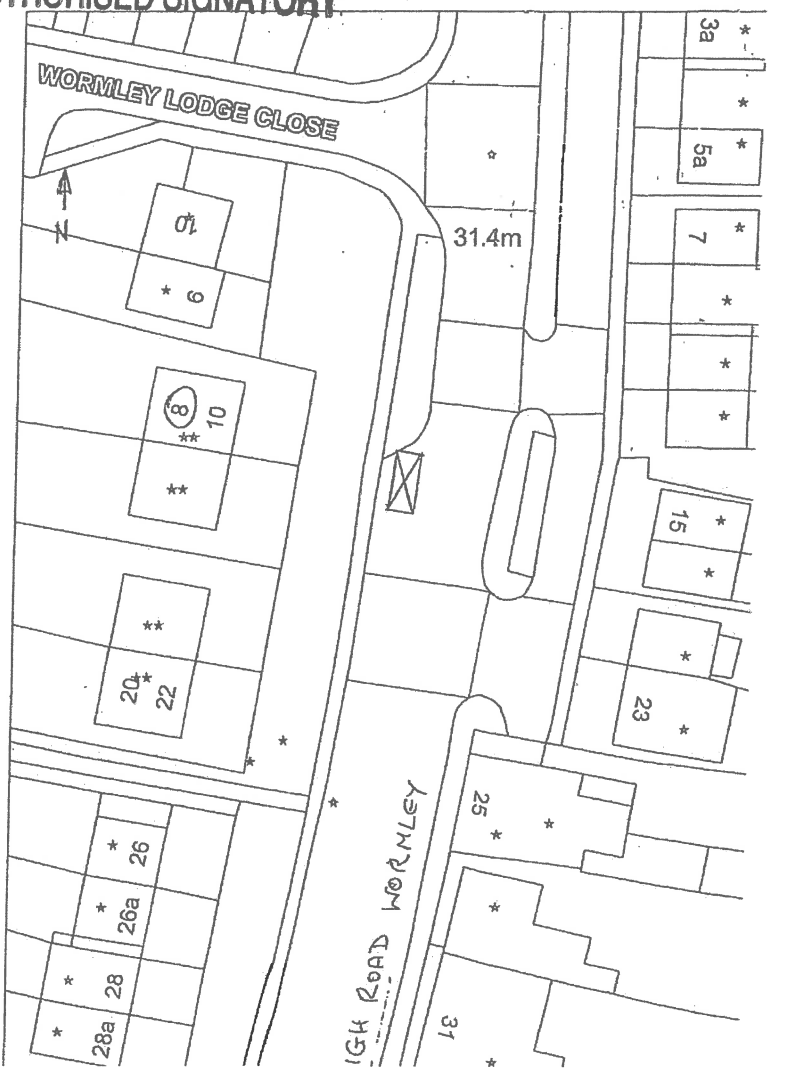
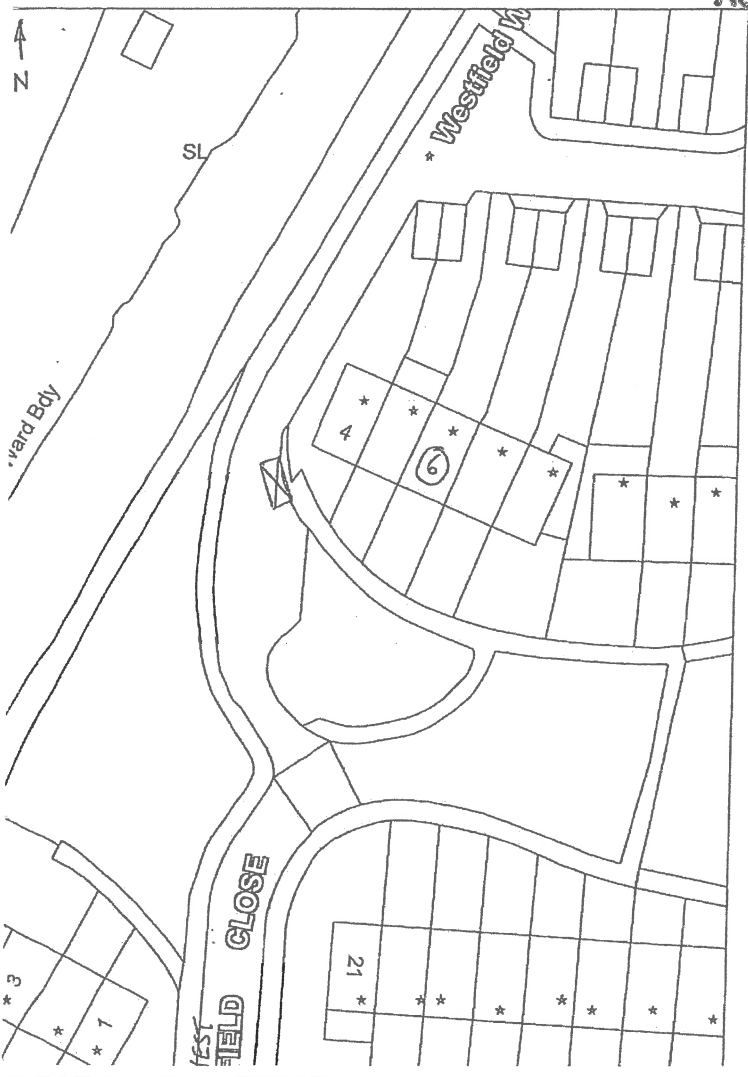
M. B. [Signature]
 AUTHORIZED SIGNATORY







M. Waters
 AUTHORIZED SIGNATORY



IN WITNESS whereof the Common Seal of the Council of the Borough of Broxbourne has hereunto been affixed on this 6 June 2016

The Common Seal of the COUNCIL OF THE BOROUGH OF BROXBOURNE was hereunto affixed in the presence of:-



M. Soater
Authorised Signatory

Dated 6 June 2016

ROAD TRAFFIC REGULATION ACT 1984

THE BOROUGH OF BROXBOURNE
(VARIOUS ROADS) (DISABLED
PERSON'S PARKING PLACES)
ORDER No. 2016

**THE BOROUGH OF BROXBOURNE
ROAD TRAFFIC REGULATION ACT 1984**

**THE BOROUGH OF BROXBOURNE (VARIOUS ROADS)
(DISABLED PERSONS' PARKING PLACES) ORDER No. 2016**

NOTICE is hereby given that on the 6th June 2016 the Council of the Borough of Broxbourne, pursuant to arrangements made with Hertfordshire County Council under Section 19 of the Local Government Act 2000 and the Local Authorities (Arrangements for the Discharge of Functions) (England) Regulations 2000, made an order under Sections 32 and 35 of the Road Traffic Regulations Act 1984, the effect of which is to:

1. Provide Disabled Persons' Parking Places adjacent to or outside the following premises or in the locations indicated if not directly outside the premises as shown;

<u>Premises</u>	<u>Location – if not directly outside Premises</u>
i 9 St. Augustines Drive, Broxbourne	
ii 36 Birchfield Road, Cheshunt	
iii 102 Birchfield Road, Cheshunt	
iv 12 Brampton Close, Cheshunt	Opposite No. 18 Brampton Close
v 2 Collett Gardens, Cheshunt	Outside property in Collett Close
vi 132 Dewhurst Road, Cheshunt	
vii 37 Hawthorne Avenue, Cheshunt	
viii 29 McGredy, Cheshunt	Rear of No. 17 McGredy
ix 42 Ousden Close, Cheshunt	Outside Nos. 46 & 48 Ousden Close
x 93 Russells Ride, Cheshunt	
xi 4 Wheatcroft, Cheshunt	Opposite No.119 Wheatcroft
xii 44 The Drive, Goffs Oak	Outside No. 48 The Drive
xiii 17 Nursery Road, Hoddesdon	
xiv 83 Roselands Avenue, Hoddesdon	Outside No. 79 Roselands Avenue
xv 13 Galloway Close, Turnford	
xvi 23 Perram Close, Turnford	
xvii 46 Hurst Drive, Waltham Cross	
xviii 69 Northfield Road, Waltham Cross	
xix 6 Westfield Close, Waltham Cross	Outside No. 4 Westfield Close
xx 8 High Road, Wormley	

2. Remove the existing Disabled Persons' Parking Places at the following locations which are no longer being used;

1. 9 Chadwell Avenue, Cheshunt	12. 30 Barclay Court, Hoddesdon
2. 16 Delamare Road, Cheshunt	13. 34 Glenester Close, Hoddesdon
3. 131 Downfield Road, Cheshunt	14. 42 Hawthorn Road, Hoddesdon
4. 3 Hargreaves Avenue, Cheshunt	15. 55 Lord Street, Hoddesdon
5. 5 Hargreaves Close, Cheshunt	16. 70 Lord Street, Hoddesdon
6. 6 Hargreaves Close, Cheshunt	17. 110 Old Highway, Hoddesdon
7. 14 Harkness, Cheshunt	18. 91 Rowan Drive, Turnford
8. 74 Harkness, Cheshunt	19. 5 Berwick Close, W. Cross
9. 39 Limes Road, Cheshunt	20. 12 Cecil Road, W. Cross
10. 45 Lower Meadow, Cheshunt	21. 13 Kenworth Close, W. Cross
11. 47 Smarts Green, Cheshunt	22. 14 King Edward Road, W. Cross

3. Relocate Disabled Persons Parking Place from outside 7 Craigs Walk, Cheshunt to a new position outside 9 Craigs Walk, Cheshunt west next to its current position.

The Order came in to force on 9th June 2016.

Documents giving more detailed particulars of the Order namely a copy of the Order and maps contained in it, showing each length of road to which the Order relates, a statement of the Council's reasons for making the Order, the Notice relating to the Council's intention to make the Order together with a copy of The Borough of Broxbourne (Control of Parking Consolidation) Order 2013, The Borough of Broxbourne (Various Roads) (Disabled Persons' Parking Places) Order No. 2 2013, The Borough of Broxbourne (Various Roads) (Disabled Persons' Parking Places) Order No. 2 2014, The Borough of Broxbourne (Various Roads) (Disabled Persons' Parking Places) Order No. 2015 The Borough of Broxbourne (Various Roads) (Disabled Persons' Parking Places) Order No. 2 2015 may be inspected by visiting the Cheshunt One Stop Shop, Laura Trott Leisure Centre, Windmill Lane, CHESHUNT and the Hoddesdon One Stop Shop, Hoddesdon Library, 98A High Street, HODDESDON, between the hours of 9.00 am and 5.30 pm, Monday to Fridays and 9.00 am and 1.00 pm Saturdays, the Waltham Cross One Stop Shop, 123 High Street, WALTHAM CROSS between the hours of 9.00 am and 5.30 pm Monday to Fridays and 9.00 am and 4.00 pm Saturdays and at the office of the undersigned between the hours 8.30 am and 5.30 pm Monday to Fridays.

Any person wishing to question the validity of the Order or any of its provisions on the grounds that it or they are not within the powers conferred by the Road Traffic Regulation Act 1984, or on any grounds that any requirements of that Act or any regulations made thereunder has not been complied with, may within 6 weeks from 12th May 2016, make any application for this purpose to the High Court.

Dated 6th June 2016

Borough Offices
Bishops' College
Churchgate
CHESHUNT
Herts EN8 9XB



Peter Linkson
Director of Environmental Services