

BOROUGH OF BROXBOURNE
ROAD TRAFFIC REGULATION ACT 1984

THE BOROUGH OF BROXBOURNE (VARIOUS ROADS)
(DISABLED PERSONS' PARKING PLACES) ORDER 2011

THE COUNCIL OF THE BOROUGH OF BROXBOURNE, pursuant to arrangements made with the Hertfordshire County Council under Section 19 of the Local Government Act 2000 and the Local Government (Arrangements for Discharge of Functions) (England) Regulations 2000, and in exercise of its powers under Sections 32 and 35 of the Road Traffic Regulation Act 1984, (hereinafter called "the 1984 Act") and of all other enabling powers, and after consultation with the Chief Officer of Police in accordance with Part III of Schedule 9 of the Act of 1984, hereby make the following Order:

1(1) In this Order

"Disabled Person's Badge" has the same meaning as in The Local Authorities' Traffic Orders (Exemptions for Disabled Persons) (England) Regulations 2000.

"Disabled Person's Vehicle" has the same meaning as in Section 142(1) of the 1984 Act

"driver", in relation to a vehicle waiting in a parking place, means the person driving the vehicle at the time it was left in the parking place

"parking place" means any part of a road authorised by this Order to be used as a parking place

(2) For the purposes of this Order a vehicle shall be regarded as displaying a Disabled Person's Badge in the relevant position if:

- (i) in the case of a vehicle fitted with a dashboard or fascia panel, the badge is exhibited thereon so that the serial number and the date of expiry of the badge is legible from outside the vehicle; or
- (ii) in the case of a vehicle not fitted with a dashboard or fascia panel, the badge is exhibited in a conspicuous position on the vehicle so that the serial number and the date of expiry of the badge is legible from outside the vehicle.

2 (1) Those parts of the roads specified in Column 1 of Schedule 1 to this Order are authorised to be used in a position specified in Column 2 of the said Schedule 1 and subject to the following provisions of this Order, as parking places at any time for Disabled Person's Vehicles which display in the relevant position a Disabled Person's Badge.

(2) Nothing in paragraph (1) of this Article shall restrict the power of the Council, for preventing obstruction of the roads, by order, or by notice on the occasion of any public procession, rejoicing or illumination, or when the roads are thronged or liable to be obstructed, to close the parking place.

3. Where in Column 1 of Schedule 1 to this Order a parking place is described as available for a Disabled Person's Vehicle which displays in the relevant position a Disabled Person's Badge, the driver of a vehicle shall not permit it to wait in that parking place unless it is:

- (a) a Disabled Person's Vehicle on which is displayed in the relevant position a Disabled Persons Badge, and
 - (b) wholly within the limits of the parking place.
4. A driver of a vehicle shall not use a parking place:-
 - (a) so as unreasonably to prevent access to any premises adjoining the road, or the use of the road by other persons, or so as to be a nuisance;
 - (b) when for preventing obstruction of the road the Council shall by order or by notice made on the occasion of any public procession, rejoicing or illumination or when the roads are thronged or liable to be obstructed have closed that parking place and exhibited notice of such closing on or near the parking place.
5. The driver of a motor vehicle using a parking place shall stop the engine as soon as the vehicle is in a position in the parking place, and shall not start the engine except when about to change the position of the vehicle in or to depart from the parking place.
6. No person shall use a vehicle, while it is in a parking place, in connection with the sale of any article to persons in or near the parking place or in connection with the selling or offering for hire of his skill or service.
7. Subject to the provision hereto, when a vehicle is left in a parking place in contravention of any of the provisions contained in Articles 3 and 4 of this Order a person authorised in that behalf by the Council may remove the vehicle or arrange for it to be removed from that parking place provided that when a vehicle is waiting in a parking place in contravention of the provisions of Articles 3 and 4 of this Order, a person authorised in that behalf by the Council may alter or cause to be altered the position of the vehicle in order that its position shall comply with that provision.
8. Any person removing a vehicle or altering its position by virtue of the last preceding Article of this Order may do so by towing or driving the vehicle or in such other manner as he may think necessary and may take such measures in relation to the vehicle as he may think necessary to enable him to remove it or alter its position, as the case may be.
9. When a person authorised by the Council removes or makes arrangements for the removal of a vehicle from a parking place by virtue of Article 7 of this Order, he shall make such arrangements as may be reasonably necessary for safe custody of the vehicle.
10. The Borough of Broxbourne (Control of Parking) (Consolidation) Order 2008 is hereby amended by the deletion from the On-Street Plans contained therein of the parking places for Disabled Persons Vehicles specified in Schedule 2 of this Order.
11. Paragraph No.21 of Schedule 1 to the Borough of Broxbourne (Various Roads) (Disabled Persons Parking Places) Order No.2 2008 is hereby revoked.
12. Paragraphs No.13 & 14 of Schedule 1 to the Borough of Broxbourne (Various Roads) (Disabled Persons Parking Places) Order 2009 is hereby revoked.

13 Paragraphs No.1 & 7 of Schedule 1 to the Borough of Broxbourne (Various Roads) (Disabled Persons Parking Places) Order 2010 is hereby revoked.

14 This Order shall come into operation on the 2nd of June 2011 and may be cited as the Borough of Broxbourne (Various Roads) (Disabled Person's Parking Places) Order 2011.

SCHEDULE 1

Column 1	Column 2
Description of the parking place	Position in which the vehicle may wait
1 Barrow Lane, CHESHUNT south side from a point 1.85m east of the western flank wall of Nos. 119 & 121 eastwards for a distance of 6m	Parallel and adjacent to the kerb
2 Burleigh Road, CHESHUNT west side from a point 1m south of the boundary between Nos. 1 & 2 southwards for a distance of 5m	Parallel and adjacent to the kerb
3 Cromwell Avenue, CHESHUNT north side from a point in line with the boundary between Nos. 38 & 40 eastwards for a distance of 6m	Parallel and adjacent to the kerb
4 Downfield Road, CHESHUNT north side from a point 6.25m east of the western flank wall of Nos. 127-135 eastwards for a distance of 6m	Parallel and adjacent to the kerb
5 Hammond Close, CHESHUNT east side from a point 2m north of the southern flank wall of No. 14 northwards for a distance of 2.4m	Lengthwise at 90° to the kerb in a East / West direction
6 Hatton Road, CHESHUNT east side from a point 0.3m north of the boundary between Nos. 4 & 6 northwards for a distance of 6m	Parallel and adjacent to the kerb
7 Rowlands Close, CHESHUNT east side from a point 5.5m north of the boundary between Nos.72 & 73 northwards for a distance of 5.5m	Parallel and adjacent to the kerb
8 Whitefields Road, CHESHUNT east side from a point 1.4m south of the boundary between Nos.118 & 120 northwards for a distance of 6m	Parallel and adjacent to the kerb
9 Beyers Gardens, HODDESDON north kerb line in the central parking area from a point in line with the boundary between Nos.8 & 10 southwards for a distance of 2.4m	Parallel and adjacent to the kerb

- | | | |
|----|---|--|
| 10 | Hawards Road, HODDESDON south side from a point 4.1m east of the western flank wall of No. 10 eastwards for a distance of 5.9m | Parallel and adjacent to the kerb |
| 11 | Broomfield Road, TURNFORD north side from a point 2.75m west of the boundary between Nos.49 & 51 westwards for a distance of 3m | Lengthwise at 90° to the kerb in a North / South direction |
| 12 | Barbel Close, WALTHAM CROSS north side from a point 0.75m east of the boundary between Nos. 9 – 15 & 17 – 23 eastwards for a distance of 6m | Parallel and adjacent to the kerb |
| 13 | Queens Drive, WALTHAM CROSS east side from a point in line with the southern rear wall of No.194 Eleanor Cross Road northwards for a distance of 6m | Parallel and adjacent to the kerb |
| 14 | York Road, WALTHAM CROSS west side from a point inline with the boundary between Nos. 38 & 40 northwards for a distance of 6m | Parallel and adjacent to the kerb |

SCHEDULE 2

Column 1

Description of the parking place

- 1 BIRCHFIELD ROAD, CHESHUNT east side from a point in line with the boundary between Nos. 3 & 5 northwards for a distance of 6 metres.
- 2 PENGELLY ROAD, CHESHUNT south side from a point in line with the boundary between Nos. 54 & 56 southeast wards for a distance of 6 metres.
- 3 SOUTHFIELD ROAD, CHESHUNT north side from a point in line with a point 2 metres east of the boundary wall between Nos. 73 & 75 westward for a distance of 6 metres
- 4 TUDOR AVENUE, CHESHUNT north side from a point 1 metre west of the eastern flank wall of No. 43 westwards for a distance of 6 metres
- 5 WHEATCROFT, CHESHUNT south side from a point in line with the boundary wall between Nos. 27 & 28 westwards for a distance of 2.5 metres
- 6 WHITEHANDS CLOSE, HODDESDON north side from a point in line with a point 5.5metres east of the western flank wall of Nos. 1 & 8 eastwards for a distance of 6 metres.
- 7 MURCHISON ROAD, HODDESDON from a point in line with the eastern flank wall of No 17 westwards for a distance of 6 metres.
- 8 FARMHOUSE CLOSE, TURNFORD north side from a point 4 metres west of a point in line with the western boundary of No.23, westwards for a distance of 2.5 metres.
- 9 GARNER DRIVE, TURNFORD south side from a point in line with the boundary of Nos. 19 & 21 eastward for a distance of 6 metres
- 10 CAMERON DRIVE, WALTHAM CROSS south side from a point in line with the boundary wall between No. 57 & 59 eastwards for a distance of 6 metres.

- 11 BARBEL CLOSE, WALTHAM CROSS north side from a point inline with the flank wall of Nos.33 – 39 westwards for a distance of 6 metres
- 12 YORK ROAD, WALTHAM CROSS west side from a point 1 metre west of the western flank wall of No 1 eastwards for a distance of 6 metres.
- 13 WHARF ROAD, WORMLEY south side in line with the boundary wall of No. 26 & 28 westwards for a distance of 6 metres

IN WITNESS whereof the Common Seal of the Council of the Borough of Broxbourne has hereunto been affixed on this 7th July 2011

The Common Seal of the COUNCIL OF THE BOROUGH OF BROXBOURNE was hereunto affixed in the presence of:-



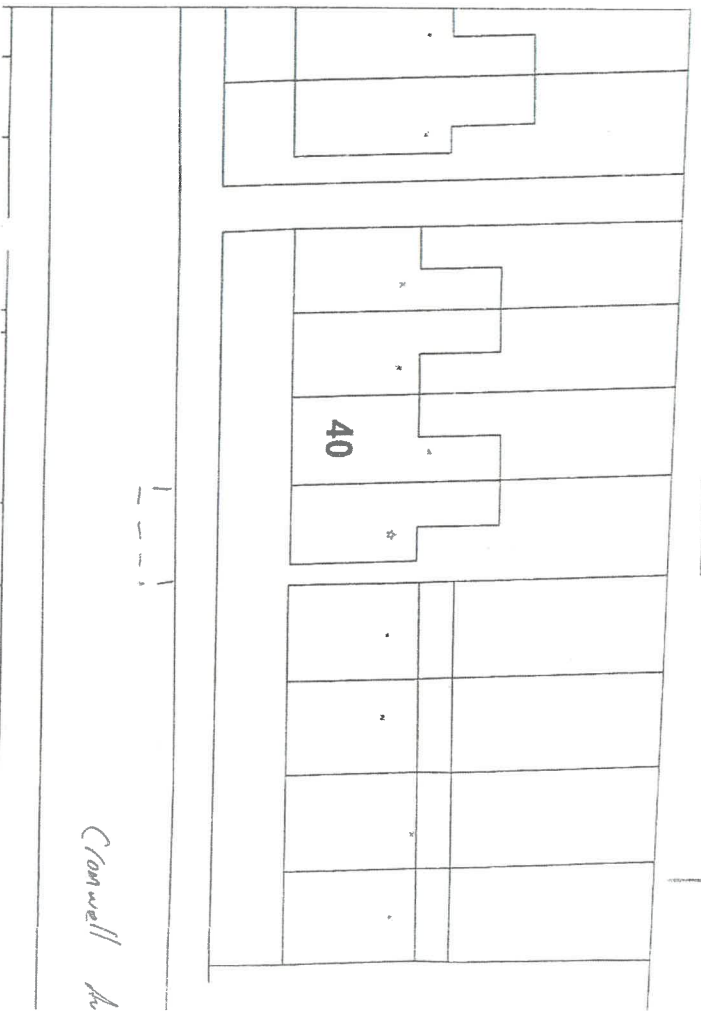

Chief Executive Officer

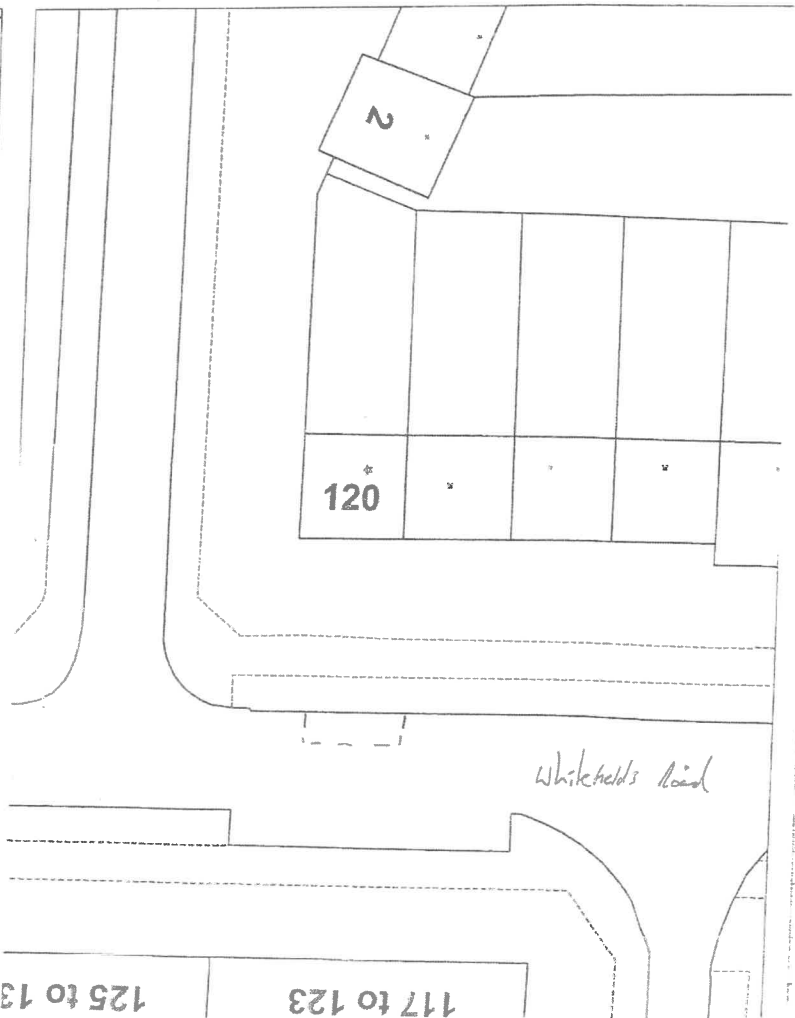
Dated 7th July 2011

OAD

n



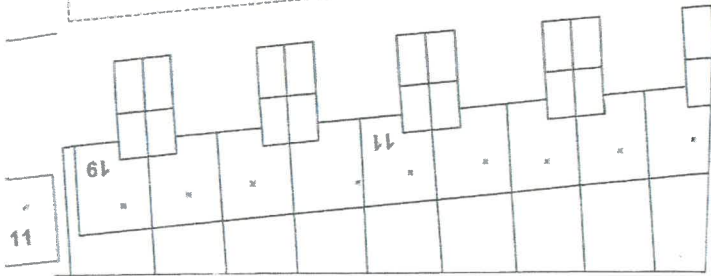
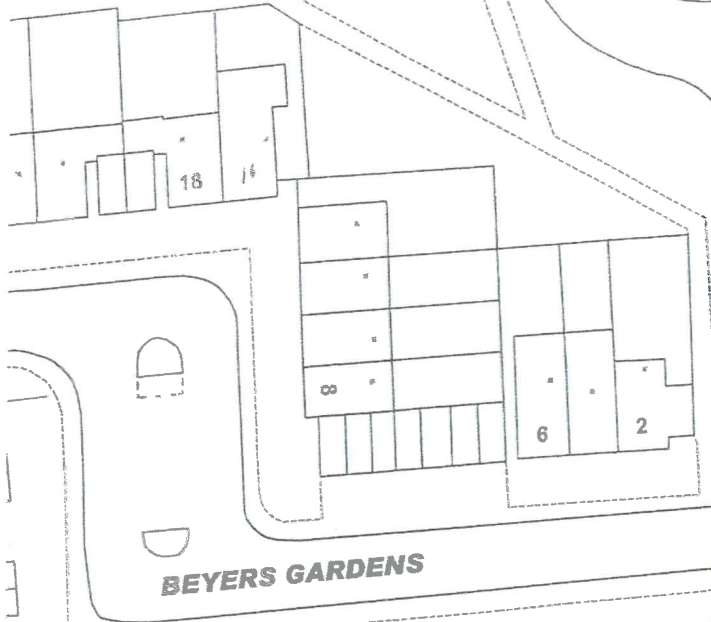




125 to 13

117 to 123

BRIDLE WAY



HAWARD ROAD



BARBEL CLOSE



