

WINSTON CHURCHILL WAY A121



SUBJECT TO SITE SURVEY, CONFIRMATION OF LEGAL BOUNDARIES, SITE CONSTRAINTS & HIGHWAYS

THE HARRIS GROUP LTD DOES NOT ACCEPT LIABILITY FOR ANY DEVIATION FROM OUR DRAWINGS OR SPECIFICATION

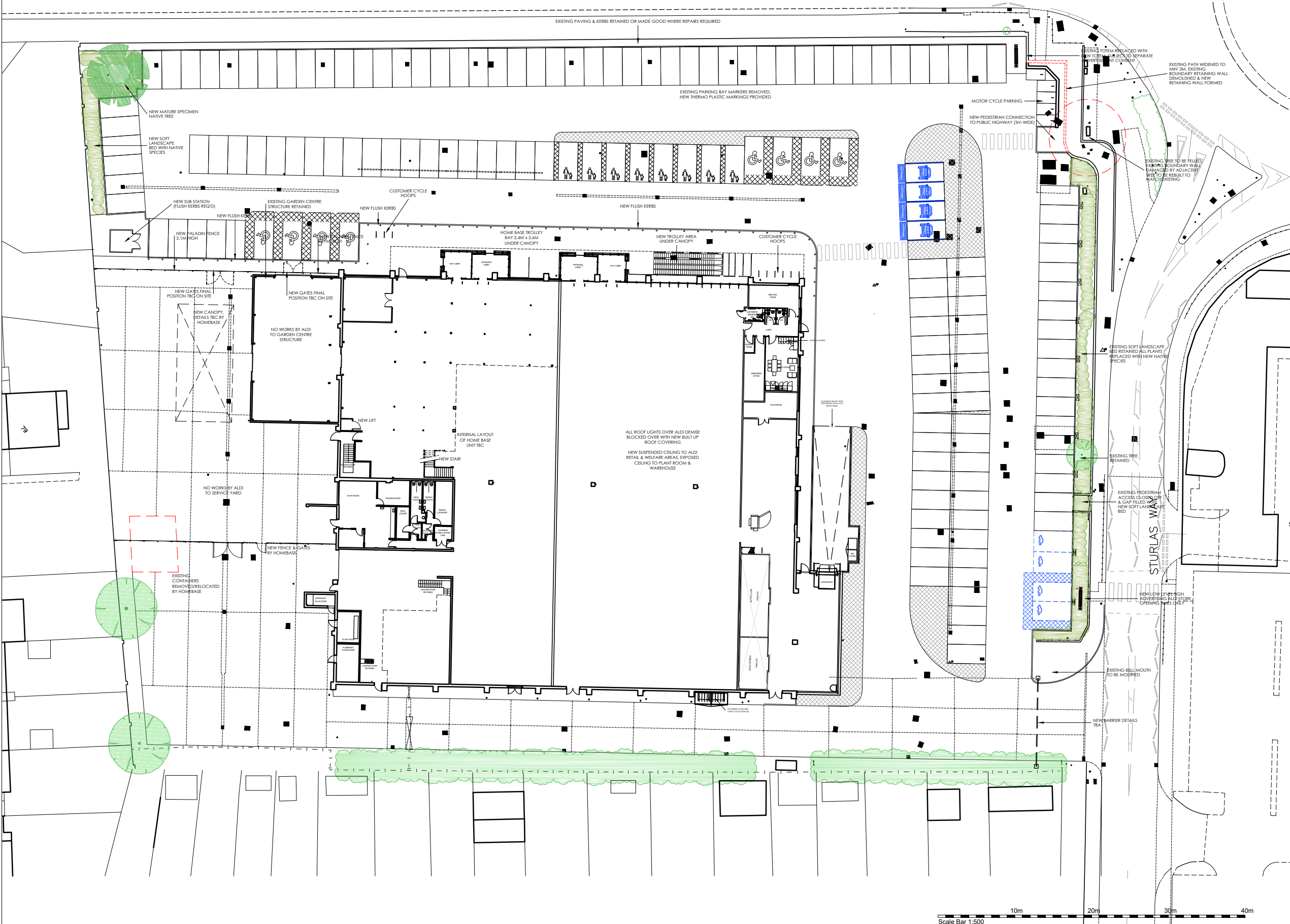
**EXTERNALS:**  
SITE AREA (RED LINE) 12,159 SQ.M; 3.005 ACRES; 1.217 HECTARES

155 SHARED CUSTOMER SPACES INC 8 DDA, 8 PC & 4 C+C; 4 ACTIVE EVCP & 16 PASSIVE EVCP; 5 MOTOR CYCLE SPACES; 18 CUSTOMER CYCLE SPACES; 10 STAFF CYCLE SPACES

EXISTING PROPOSED PARKING BAYS 3,520 SQ.M (GEA) 3,596 SQ.M (GEA)  
PARKING AISLES 2.5M X 5.0M VARIES MIN 6M

**ALDI FOOD STORE:**  
PROPOSED RETAIL AREA 1,756 SQ.M (GIA)  
WAREHOUSE 1,262 SQ.M (GIA)  
WELFARE 337 SQ.M (GIA)  
EXTERNAL LOBBY 120 SQ.M (GIA)  
INTERNAL WALLS 29 SQ.M (GIA)  
RETAIL AREA 8 SQ.M (GIA)  
WAREHOUSE 23.9M X 52.7M 7M

**HOME BASE:**  
PROPOSED GROUND INC GARDEN CENTRE STRUCTURE 2,371 SQ.M (GIA)  
EXTERNAL LOBBY MEZZ 1,706 SQ.M (GIA)  
29 SQ.M (GIA)  
436 SQ.M (GIA)



Rev	Date	Description	Rev By	Chk'd By
F	12.01.22	ALIGNMENT OF BOUNDARY WALL IN NORTH EAST CORNER SPLAYED	JPG	---
E	30.09.21	PEDESTRIAN ROUTES INTO THE SITE. REV'D, ANNOTATION ADDED RE STAFF SHOWERS, LOCKERS, STAFF CYCLE SPACES ADDED	JPG	---
D	15.04.21	NUMBER OF CYCLES SPACES INCREASED	JPG	---
C	01.04.21	EMPLOYEE SHOWER RMS ADDED	JPG	---
B	19.03.21	EXTENDED TOPG ADDED	JPG	---
A	26.02.21	LAYOUT UPDATED TO AFL DRAWINGS & TO INCLUDE MEASURES IN RESPONSE TO HIGHWAY AUTHORITY COMMENTS	JPG	---



Project Title	PROPOSED ALDI FOOD STORE AND HOMEBASE UNIT EXISTING HOME BASE UNIT STURLAS WAY WATHAM CROSS EN8 7BF		
Client	ALDI STORES LIMITED - CORPORATE		
Status	PLANNING		
Scale	1:500	Drawing Size	A3
Date	14.09.20	Drawn By	JPG
		Checked	---
Drawing Title	PROPOSED SITE PLAN		
Job-Dwg No	2924-COR-111	Rev	F

- 2 St. Johns North, Wakefield, WF1 3QA t. 01924 291800
- Carvers Warehouse, 77 Dale Street, Manchester, M1 2HG t. 0161 2388555
- The Old Rectory, 79 High Street, Newport Pagnell, MK16 8AB t. 01908 211377
- 101 London Road, Reading, RG1 5BY t. 0118 9507700
- 10 Gees Court, 31 Christophers Place, London, W1U 1JJ t. 0207 4091215

