

SUBJECT TO SITE SURVEY, CONFIRMATION OF LEGAL BOUNDARIES, SITE CONSTRAINTS & HIGHWAYS

THE HARRIS GROUP LTD DOES NOT ACCEPT LIABILITY FOR ANY DEVIATION FROM OUR DRAWINGS OR SPECIFICATION

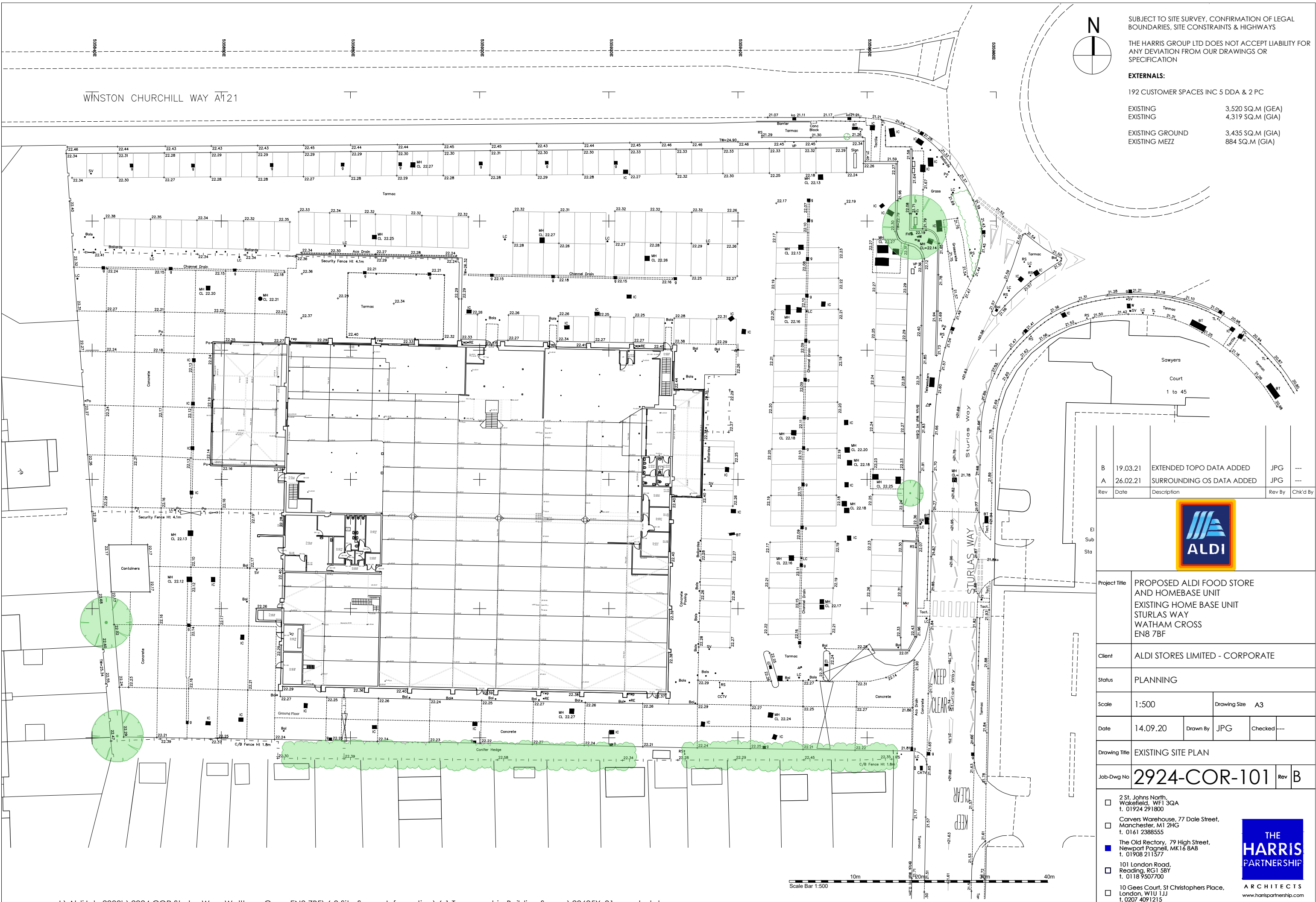
EXTERNALS:

192 CUSTOMER SPACES INC 5 DDA & 2 PC

EXISTING 3,520 SQ.M (GEA)
EXISTING 4,319 SQ.M (GIA)

EXISTING GROUND 3,435 SQ.M (GIA)
EXISTING MEZZ 884 SQ.M (GIA)

WINSTON CHURCHILL WAY A121



Rev	Date	Description	Rev By	Chk'd By
B	19.03.21	EXTENDED TOPO DATA ADDED	JPG	---
A	26.02.21	SURROUNDING OS DATA ADDED	JPG	---



Project Title	PROPOSED ALDI FOOD STORE AND HOMEBASE UNIT EXISTING HOME BASE UNIT STURLAS WAY WATHAM CROSS EN8 7BF		
Client	ALDI STORES LIMITED - CORPORATE		
Status	PLANNING		
Scale	1:500	Drawing Size	A3
Date	14.09.20	Drawn By	JPG
		Checked	---
Drawing Title	EXISTING SITE PLAN		
Job-Dwg No	2924-COR-101	Rev	B

- 2 St. Johns North, Wakefield, WF1 3QA t. 01924 291800
- Carvers Warehouse, 77 Dale Street, Manchester, M1 2HG t. 0161 2388555
- The Old Rectory, 79 High Street, Newport Pagnell, MK16 8AB t. 01908 211377
- 101 London Road, Reading, RG1 5BY t. 0118 9507700
- 10 Gees Court, 51 Christophers Place, London, W1U 1JJ t. 0207 4091215

