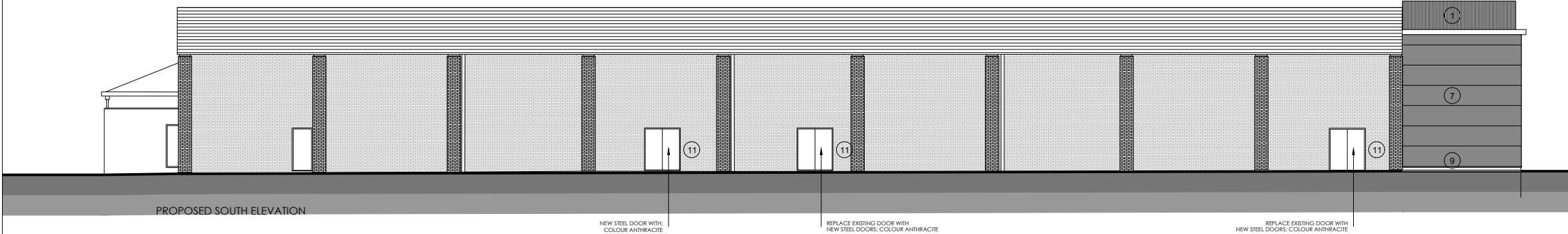
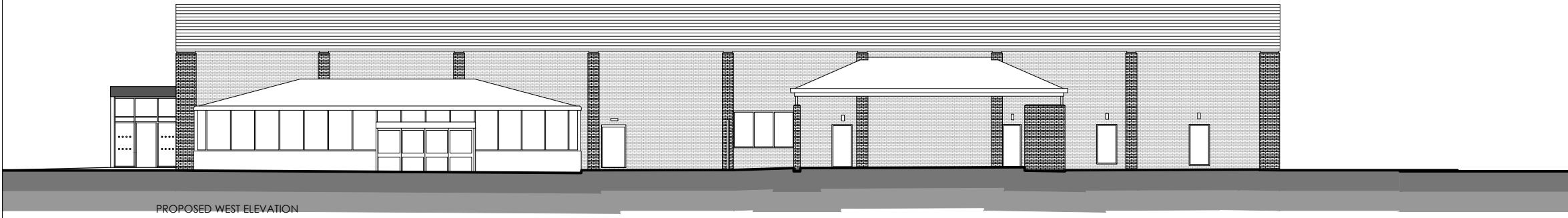
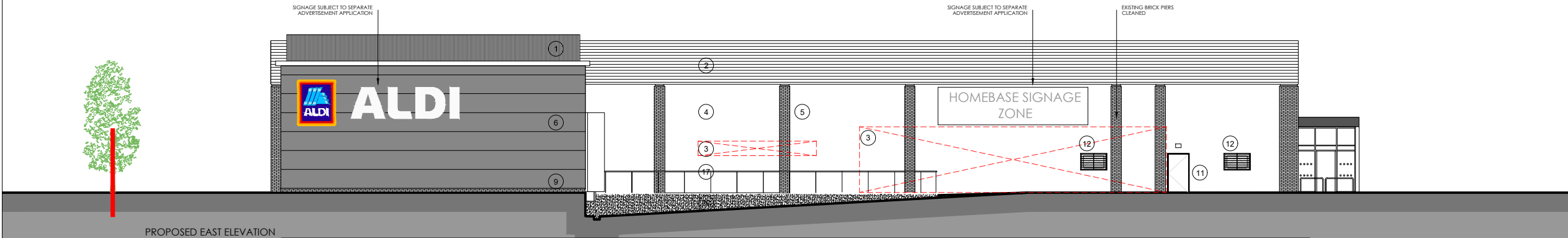


SUBJECT TO SITE SURVEY, CONFIRMATION OF LEGAL BOUNDARIES, SITE CONSTRAINTS & HIGHWAYS

THE HARRIS GROUP LTD DOES NOT ACCEPT LIABILITY FOR ANY DEVIATION FROM OUR DRAWINGS OR SPECIFICATION

MATERIALS KEY:

1. ACOUSTIC SCREENING TO ROOF PLANT, RAL 7016.
2. REPAINT EXISTING HIGH LEVEL CLADDING RAL 7016.
3. NEW INFILL BLOCKWORK FINISHED WITH WBS EPISCOAT MINERAL RENDER PLUS TEXTURED FINISH INCORPORATING STYROBOND BASECOAT WITH MESH, COLOUR 0500N (WHITE).
4. WBS RENDER SYSTEM WHITE TO EXISTING INFILL BRICK PANELS.
5. EXISTING BRICK PIERS CLEANED & RETAINED.
6. KINGSPAN KS1000MR METALLIC SILVER CLADDING RAL 9006 (NOTE: ANY ELEVATIONS NOT VISIBLE TO THE PUBLIC ARE TO BE CLAD WITH KINGSPAN KS1000RW OR KINGSPAN KS1000FC FINISHED RAL 9006).
7. KINGSPAN KS1000MR ANTHRACITE GREY CLADDING RAL 7016.
8. SHOPFRONTS - POLYESTER POWDER COATED ALUMINIUM (RAL 7016).
9. BLOCKLEYS BRICK LTD. 'SMOOTH BLACK' BRICKWORK WITH TARMAC Y14 (BLACK) COLOURED MORTAR.
10. ENTRANCE - POLYESTER POWDER COATED ALUMINIUM (RAL 7016 ANTHRACITE).
11. STEEL ESCAPE DOORS - POLYESTER POWDER COATED COLOUR GREY (RAL 7016) (FRAME COLOUR RAL 7016).
12. WINDOWS - POLYESTER POWDER COATED ALUMINIUM (RAL 7016).
13. FASCIAS - POWDER COATED ALUMINIUM TO BS6496 RAL 7016.
14. RAINWATER GOODS POLYESTER POWDER COATED ALUMINIUM (RAL 7016).
15. SECTIONAL OVERHEAD DOOR - PVF COATED STEEL (RAL 7016).
16. TROLLEY BAY RAILS - BATH FINISH STAINLESS STEEL.
17. HANDRAILS - GALVANISED TUBULAR STEEL.
18. PVF2 COATED ALUMINIUM PRESSED DRIP FLASHING. COLOUR METALLIC SILVER RAL 9006.
19. ALL EXPOSED STEELWORK TO BE PAINTED STEELGUARD Z44 FINISH COAT TO BE GLOSS FINISH RAL 7016 ANTHRACITE GREY.
20. CONCRETE FACED RETAINING WALL.



Rev	Date	Description	Rev By	Chk'd By
A	26.02.21	LAYOUT UPDATED TO AFL DRAWINGS	JPG	---



Project Title	PROPOSED ALDI FOOD STORE AND HOMEBASE UNIT EXISTING HOME BASE UNIT STURLAS WAY WATHAM CROSS EN8 7BF			
Client	ALDI STORES LIMITED - CORPORATE			
Status	PLANNING			
Scale	1:250	Drawing Size	A3	
Date	14.09.20	Drawn By	JPG	Checked ---
Drawing Title	PROPOSED ELEVATIONS			
Job-Dwg No	2924-COR-114	Rev	A	

- 2 St. Johns North, Wakefield, WF1 3QA t. 01924 291800
- Carvers Warehouse, 77 Dale Street, Manchester, M1 2HG t. 0161 2388555
- The Old Rectory, 79 High Street, Newport Pagnell, MK16 8AB t. 01908 211377
- 101 London Road, Reading, RG1 5BY t. 0118 9507700
- 10 Gees Court, St Christophers Place, London, W1U 1JJ t. 0207 4091215

