



SUBJECT TO SITE SURVEY, CONFIRMATION OF LEGAL BOUNDARIES, SITE CONSTRAINTS & HIGHWAYS

THE HARRIS GROUP LTD DOES NOT ACCEPT LIABILITY FOR ANY DEVIATION FROM OUR DRAWINGS OR SPECIFICATION

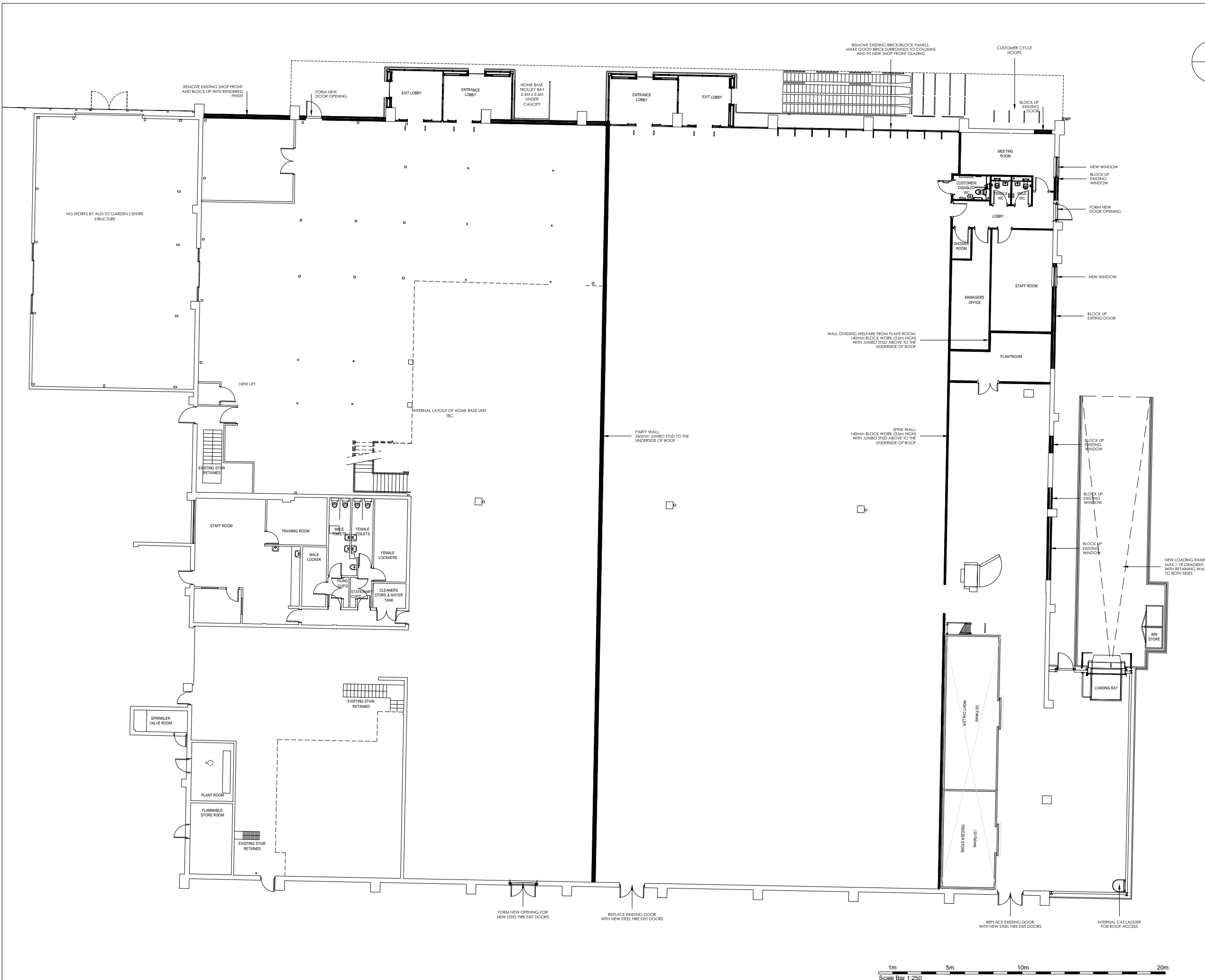
ALDI FOOD STORE:

PROPOSED	1,756 SQ.M (GIA)
RETAIL AREA	1,262 SQ.M (GIA)
WAREHOUSE	337 SQ.M (GIA)
WELFARE	120 SQ.M (GIA)
EXTERNAL LOBBY	29 SQ.M (GIA)
INTERNAL WALLS	8 SQ.M (GIA)

RETAIL AREA	23.9M X 52.7M
WAREHOUSE	7M

HOME BASE:

PROPOSED	2,371 SQ.M (GIA)
GROUND INC GARDEN CENTRE STRUCTURE	1,706 SQ.M (GIA)
EXTERNAL LOBBY	29 SQ.M (GIA)
MEZZ	636 SQ.M (GIA)



Rev	Date	Description	Rev By	Chk'd By
B	01.04.21	EMPLOYEE SHOWER RMS ADDED	JPG	---
A	26.02.21	LAYOUT UPDATED TO AFL DRAWINGS	JPG	---



Project Title	PROPOSED ALDI FOOD STORE AND HOMEBASE UNIT EXISTING HOME BASE UNIT STURLAS WAY WATHAM CROSS EN8 7BF			
Client	ALDI STORES LIMITED - CORPORATE			
Status	PLANNING			
Scale	1:250	Drawing Size	A3	
Date	14.09.20	Drawn By	JPG	Checked ---
Drawing Title	PROPOSED GROUND FLOOR PLAN			
Job-Dwg No	2924-COR-112	Rev	B	

- 2 St. Johns North, Wakefield, WF1 3QA t. 01924 291800
- Carvers Warehouse, 77 Dale Street, Manchester, M1 2HG t. 0161 2388555
- The Old Rectory, 79 High Street, Newport Pagnell, MK16 8AB t. 01908 21157
- 101 London Road, Reading, RG1 5BY t. 0118 9507700
- 10 Gees Court, St Christophers Place, London, W1U 1JJ t. 0207 4091215

