

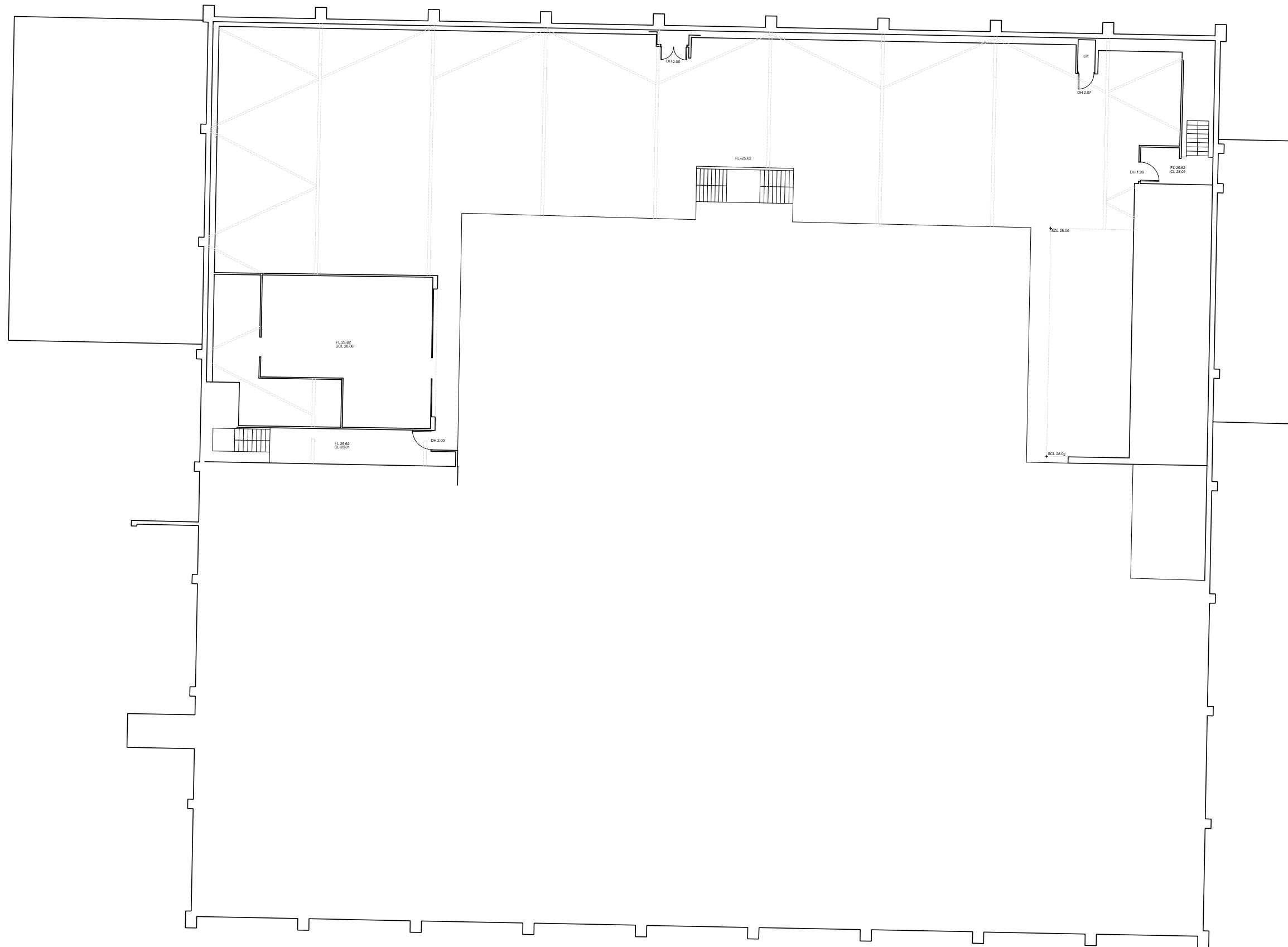


SUBJECT TO SITE SURVEY, CONFIRMATION OF LEGAL BOUNDARIES, SITE CONSTRAINTS & HIGHWAYS

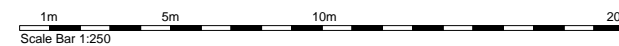
THE HARRIS GROUP LTD DOES NOT ACCEPT LIABILITY FOR ANY DEVIATION FROM OUR DRAWINGS OR SPECIFICATION

**INTERNALS:**

EXISTING	3,520 SQ.M (GEA)
EXISTING	4,319 SQ.M (GIA)
EXISTING GROUND	3,435 SQ.M (GIA)
EXISTING MEZZ	884 SQ.M (GIA)



First Floor



Rev	Date	Description	Rev By	Chk'd By
-	dd-mm-yy		---	---



Project Title	PROPOSED ALDI FOOD STORE AND HOMEBASE UNIT EXISTING HOME BASE UNIT STURLAS WAY WATHAM CROSS EN8 7BF			
Client	ALDI STORES LIMITED - CORPORATE			
Status	PLANNING			
Scale	1:250	Drawing Size	A3	
Date	14.09.20	Drawn By	JPG	Checked ---
Drawing Title	EXISTING MEZZ FLOOR PLAN			
Job-Dwg No	2924-COR-103	Rev	-	

- 2 St. Johns North, Wakefield, WF1 3QA t. 01924 291800
- Carvers Warehouse, 77 Dale Street, Manchester, M1 2HG t. 0161 2388555
- The Old Rectory, 79 High Street, Newport Pagnell, MK16 8AB t. 01908 211577
- 101 London Road, Reading, RG1 5BY t. 0118 9507700
- 10 Gees Court, St Christophers Place, London, W1U 1JJ t. 0207 4091215

