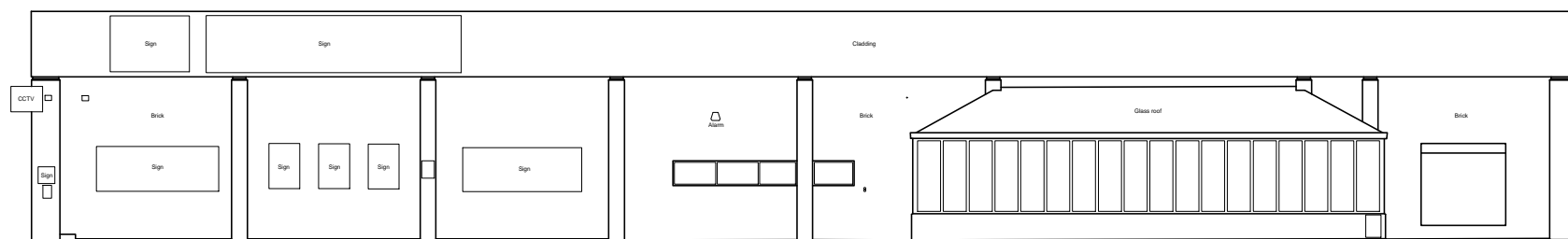
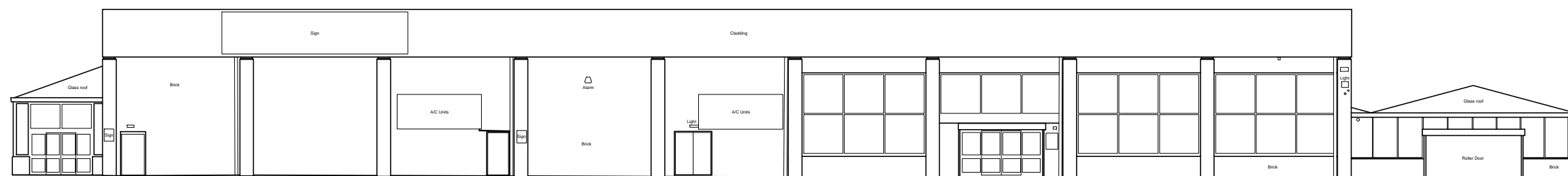


SUBJECT TO SITE SURVEY, CONFIRMATION OF LEGAL BOUNDARIES, SITE CONSTRAINTS & HIGHWAYS

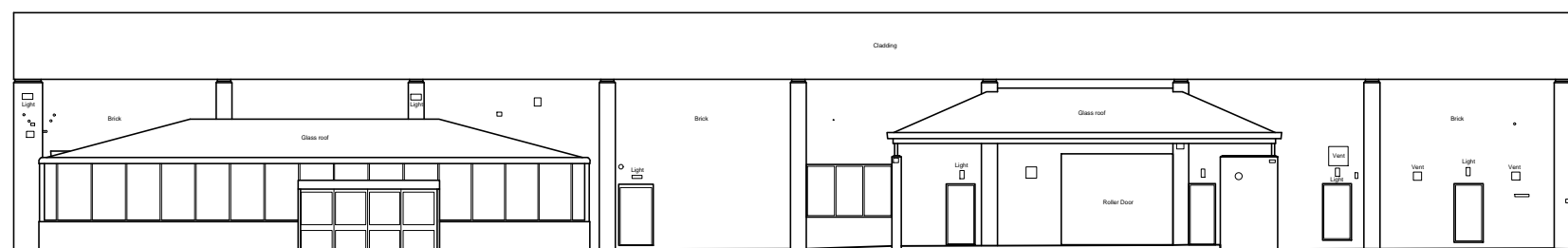
THE HARRIS GROUP LTD DOES NOT ACCEPT LIABILITY FOR ANY DEVIATION FROM OUR DRAWINGS OR SPECIFICATION



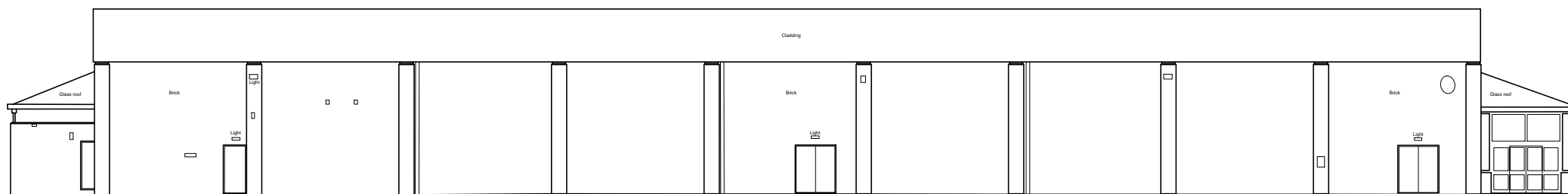
EXISTING EAST ELEVATION



EXISTING NORTH ELEVATION



EXISTING WEST ELEVATION



EXISTING SOUTH ELEVATION

Rev	Date	Description	Rev By	Chk'd By
-	dd-mm-yy	----	---	---



Project Title  
**PROPOSED ALDI FOOD STORE AND HOMEBASE UNIT**  
 EXISTING HOME BASE UNIT  
 STURLAS WAY  
 WATHAM CROSS  
 EN8 7BF

Client  
 ALDI STORES LIMITED - CORPORATE

Status  
 PLANNING

Scale  
 1:250 Drawing Size A3

Date  
 14.09.20 Drawn By JPG Checked ----

Drawing Title  
 EXISTING ELEVATIONS

Job-Dwg No  
**2924-COR-104** Rev -

- 2 St. Johns North, Wakefield, WF1 3QA t. 01924 291800
- Carvers Warehouse, 77 Dale Street, Manchester, M1 2HG t. 0161 2388555
- The Old Rectory, 79 High Street, Newport Pagnell, MK16 8AB t. 01908 211577
- 101 London Road, Reading, RG1 5BY t. 0118 9507700
- 10 Gees Court, St Christophers Place, London, W1U 1JJ t. 0207 4091215



ARCHITECTS  
 www.harrispartnership.com

