

Level	League(s)/division(s)								
1	Premier League								
2	EFL Championship								
3	EFL League One								
4	EFL League Two								
5 (Step 1)	National League								
6 (Step 2)	National League North				National League South				
7 (Step 3)	Northern Premier League Premier Division		Southern League Central Division		Southern League South Division		Isthmian League Premier Division		
8 (Step 4)	Northern Premier League Div. 1 East	Northern Premier League Div. 1 Midlands	Northern Premier League Div. 1 West	Southern League Div. 1 Central	Southern League Div. 1 South	Isthmian League Div. 1 South Central	Isthmian League Div. 1 North	Isthmian League Div. 1 South East	
9 (Step 5)	Combined Counties League Premier Division North Combined Counties League Premier Division South Eastern Counties League Premier Division Essex Senior League Hellenic League Premier Division Midland League Premier Division North West Counties League Premier Division Northern Counties East League				Northern League Division One Southern Combination League Premier Division Southern Counties East League Premier Division Spartan South Midlands League Premier Division United Counties League Premier Division North United Counties League Premier Division South Wessex League Premier Division Western League Premier Division				
10 (Step 6)	Combined Counties League Division One Eastern Counties League Division One North Eastern Counties League Division One South Hellenic League Division One Midland League Division One North West Counties League Division One North North West Counties League Division One South Northern Counties East League Division One				Northern League Division Two South West Peninsula League Premier Division East South West Peninsula League Premier Division West Southern Combination League Division One Southern Counties East League Division One Spartan South Midlands League Division One United Counties League Division One Wessex League Division One Western League Division One				

Current members

EFL League 2

• Barrow	5,045	Club Owned Ground
• Bolton Wanderers	28,723	Club Owned Ground
• Bradford City	25,136	Leased
• Cambridge United	8,127 (4,376 seated)	Club Owned Ground
• Carlisle United	17,949	Club Owned Ground
• Cheltenham Town	7,066	Club Owned Ground
• Colchester United	10,105	Ground Leased from local Authority
• Crawley Town	6,134	Ground Leased from Local Authority
• Exeter City	8,541	Ground Leased from Local Authority
• Forest Green Rovers	5,147(2,000 seated)	Ground Leased from Local Authority
• Grimsby Town	9,031 (9,031 seated)	Club Owned Ground
• Harrogate Town	5,000 (1,000 seated)	Club Owned Ground
• Leyton Orient	9,271	Ground Leased from Local Authority
• Mansfield Town	9,186	Club Owned Ground
• Morecambe	6,476 (2,247 seated)	Unknown
• Newport County	7,850	Club Owned Ground
• Oldham Athletic	13,513	Unknown
• Port Vale	19,052	Club Owned Ground
• Salford City	5,106 (2,246 seated)	Leased
• Scunthorpe United	9,088	Club Owned Ground
• Southend United	12,392	Club Owned Ground
• Stevenage	7,800	Club Owned Ground
• Tranmere Rovers	16,567	Club Owned Ground
• Walsall	11,300	Unkown

Average seats: *insufficient data*

Average capacity (From available data): 10,983

Current members

National League

• Aldershot Town	4,525 (525 seated)	Ground Leased from Local Authority
• Altrincham	7,873 (1,323 seated)	Club Owned Ground
• Barnet	6,500 (5,419 seated)	Club Owned Ground
• Boreham Wood	4,500 (1,700 seated)	Club Owned Ground
• Bromley	5,000 (1,700 seated)	Club Owned Ground
• Chesterfield	10,500	Club Owned Ground
• Dagenham & Redbridge	6,078	Leased
• Dover Athletic	5,745	Ground Leased from Local Authority
• Eastleigh	5,192 (2,700 seated)	Club Owned Ground
• FC Halifax Town	14,061 (5,830 seated)	Ground Leased from Local Authority
• Grimsby Town	9,031 (9,031 seated)	Club Owned Ground
• Hartlepool United	7,858	Ground Leased from Local Authority
• King's Lynn Town	8,200 (1,200 seated)	Unknown
• Maidenhead United	4,000 (550 seated)	Club Owned Ground
• Notts County	19,841	Unknown
• Solihull Moors	5,500	Club Owned Ground
• Southend United	12,392	Unknown
• Stockport County	10,852 (10,852 seated)	Ground Owned by Local Authority
• Torquay United	6,200 (2,992 seated)	Ground Owned by Local Authority
• Wealdstone	4,085 (709 seated)	Club Owned Ground
• Weymouth	6,600 (900 seated)	Club Owned Ground
• Woking	6,036 (2,500 seated)	Leased
• Wrexham	10,771	Leased
• Yeovil Town	9,565 (5,212 seated)	Leased

Average seats (From available data): 2,375*

Average capacity (From available data): 7,954

*Not including all-seater stadiums

National League Stadiums

Satellite Images from Google Maps

Aldershot Town

Ground: Recreation Ground

Capacity: 7,100 (2,000 seated)



Altrincham

Ground: Moss Lane

Capacity: 7,873 (1,323 seated)



Barnet

Ground: The Hive Stadium

Capacity: 6,500 (5,419 seated)



Boreham Wood

Ground: Meadow Park

Capacity: 4,500 (1,700 seated)



Bromley

Ground: Hayes Lane

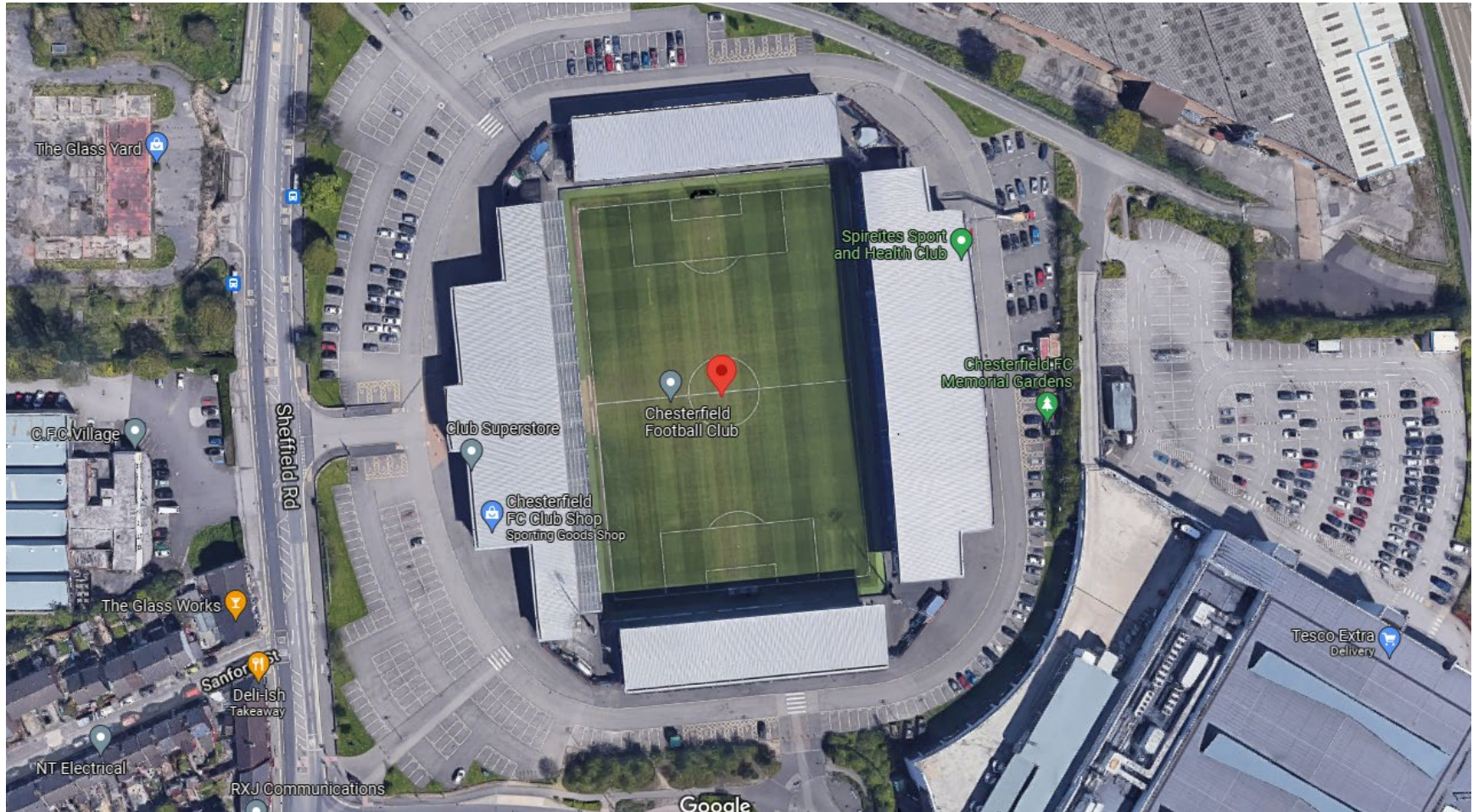
Capacity: 5,000 (1,700 seated)



Chesterfield

Ground: Technique Stadium

Capacity: 10,500



Dagenham & Redbridge

Ground: Chigwell Construction Stadium

Capacity: 6,078



Dover Athletic

Ground: Crabble Athletic Ground

Capacity: 5,745



Eastleigh

Ground: Ten Acres

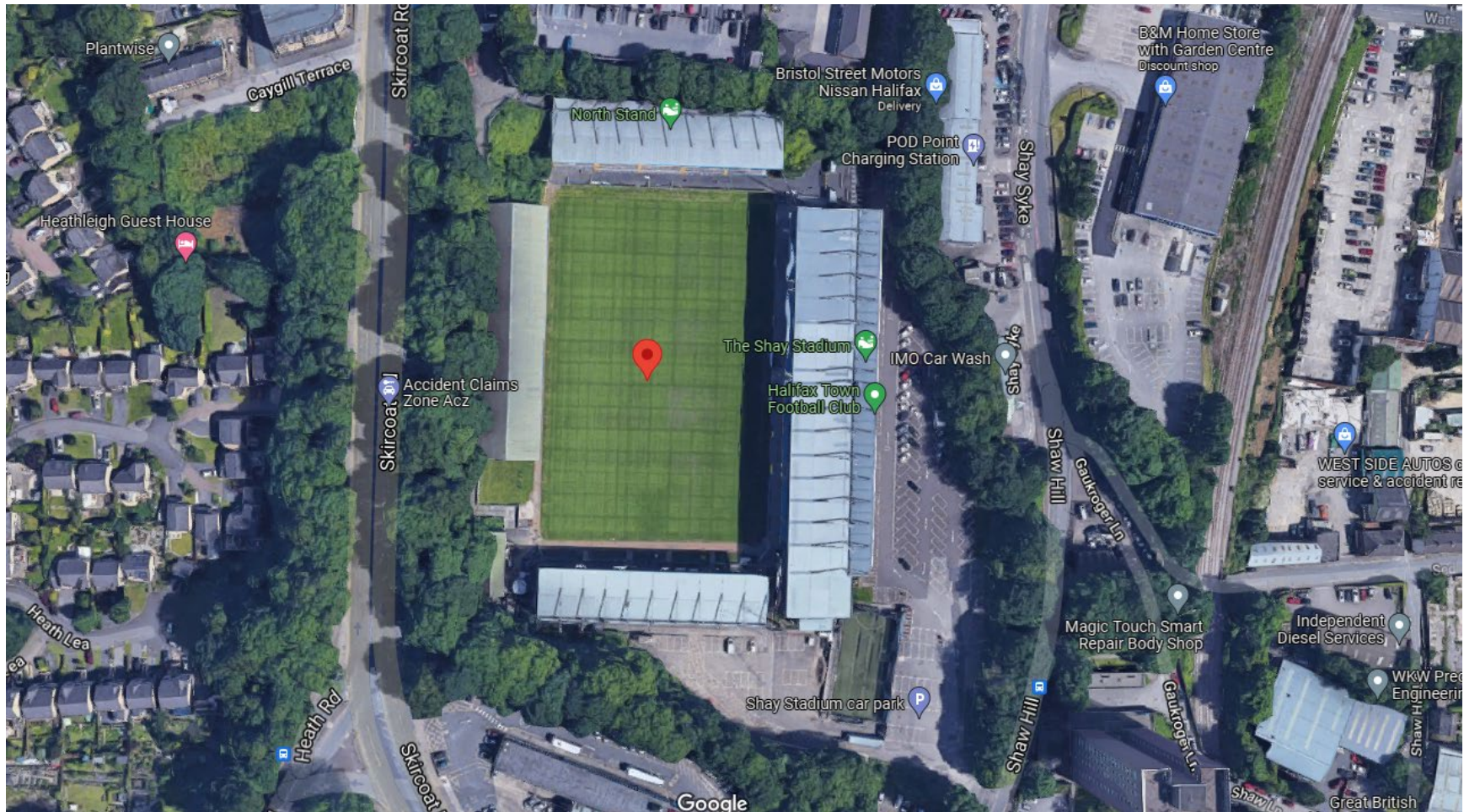
Capacity: 5,192 (2,700 seated)



FC Halifax Town

Ground: The Shay

Capacity: 14,061 (5,830 seated)



Grimsby Town

Ground: Blundell Park

Capacity: 9,031 (9,031 seated)



Hartlepool United

Ground: Victoria Park

Capacity: 7,858



King's Lynn Town

Ground: The Walks

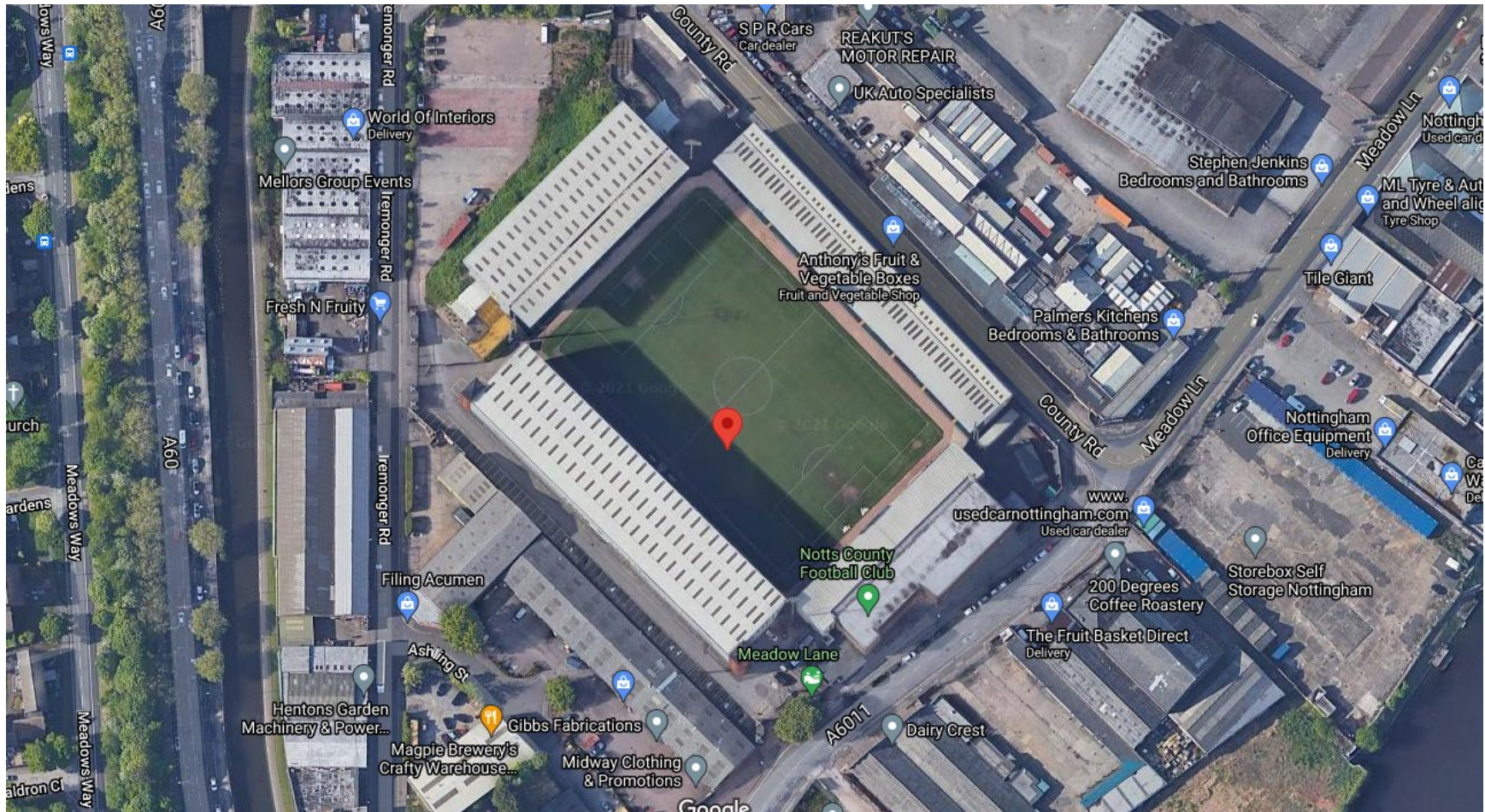
Capacity: 8,200 (1,200 seated)



Notts County

Ground: Meadow Lane

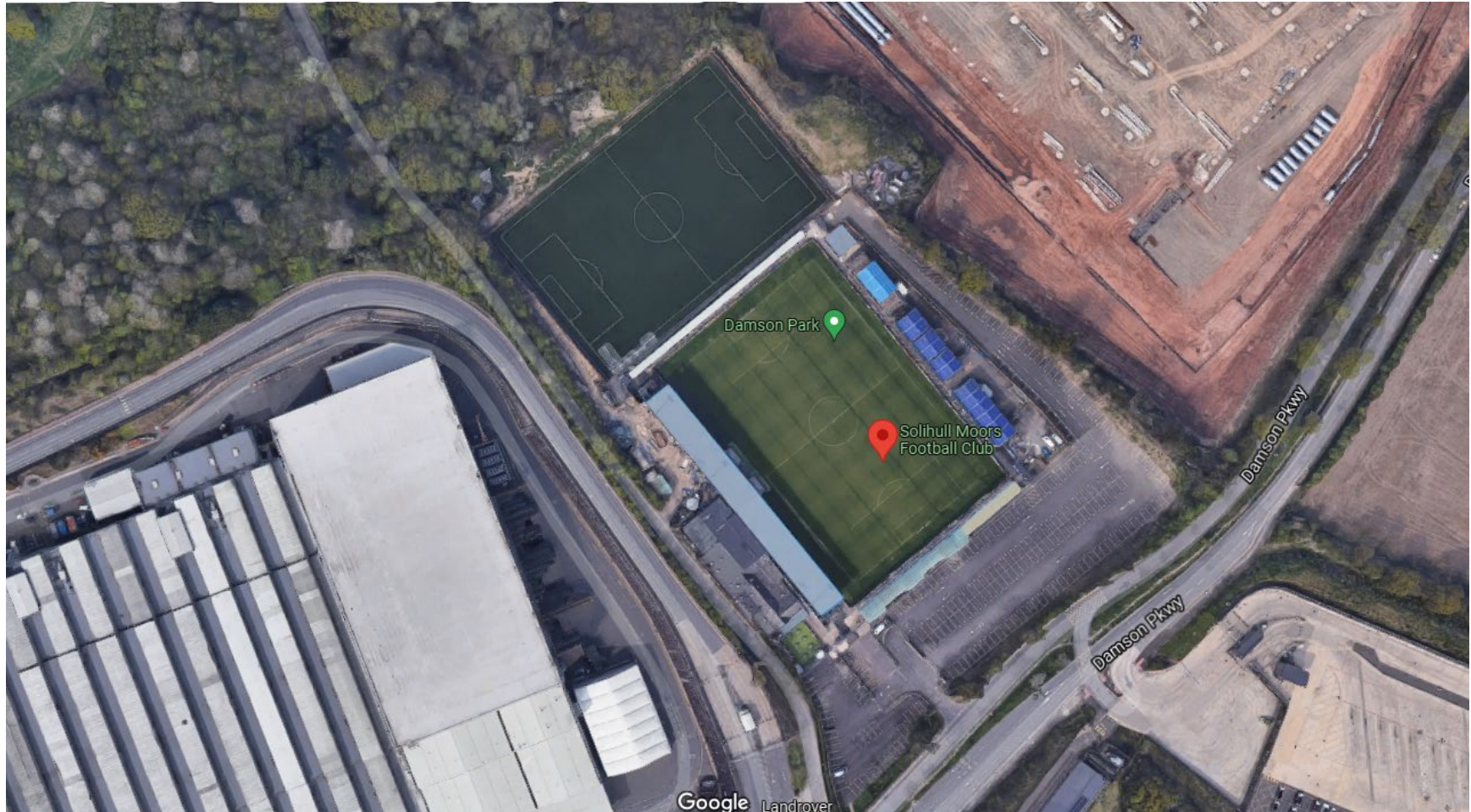
Capacity: 19,841



Solihull Moors

Ground: Damson Park

Capacity: 5,500



Maidenhead United

Ground: York Road

Capacity: 4,000 (550 seated)



Southend United

Ground: Roots Hall

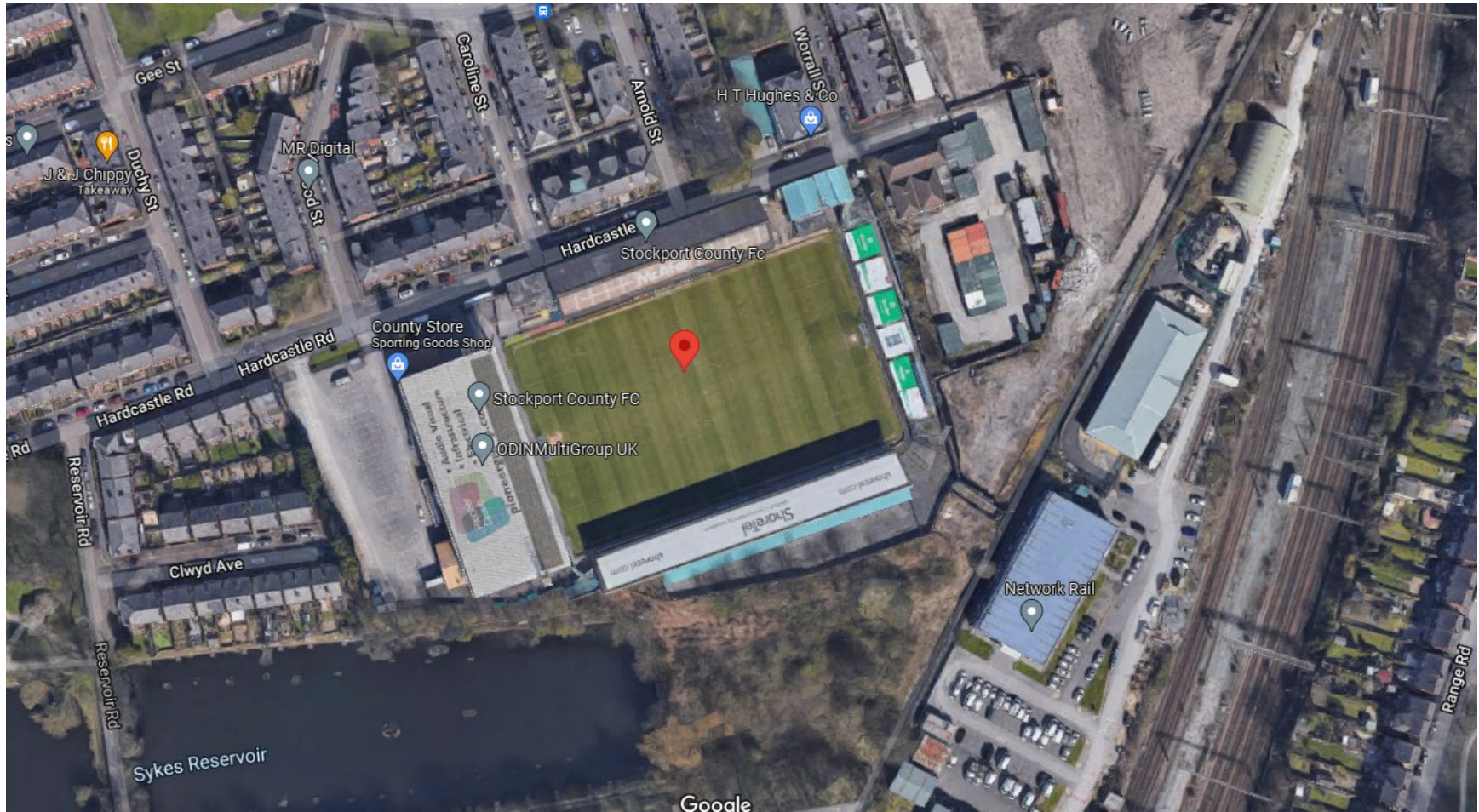
Capacity: 12,392



Stockport County

Ground: Edgeley Park

Capacity: 10,852 (10,852 seated)



Torquay United

Ground: Plainmoor

Capacity: 6,200 (2,992 seated)



Wealdstone

Ground: Grosvenor Vale

Capacity: 4,085 (709 seated)



Weymouth

Ground: Bob Lucas Stadium

Capacity: 6,600 (900 seated)



Woking

Ground: Kingfield Stadium

Capacity: 6,036 (2,500 seated)



Wrexham

Ground: Racecourse Ground

Capacity: 10,771



Yeovil Town

Ground: Huish Park

Capacity: 9,565 (5,212 seated)



Current National League South Members

• Bath City	3,528 (1,006 seated)	Club Owned Ground
• Billericay Town	5,000 (2,000 seated)	Club Owned Ground
• Braintree Town	4,222 (553 seated)	Ground Leased from Local Authority
• Chelmsford City	3,000 (1,300 seated)	Ground Leased from Local Authority
• Chippenham Town	3,500 (800 seated)	Unknown
• Concord Rangers	3,300	Club Owned Ground
• Dartford	4,100 (642 seated)	Ground Leased from Local Authority
• Dorking Wanderers	3,000 (522 seated)	Ground Leased from Local FA?
• Dulwich Hamlet	3,000 (500 seated)	Ground Leased
• Eastbourne Borough	4,151 (600 seated)	Ground Leased
• Ebbsfleet United	4,769 (2,179 seats)	Club Owned Ground
• Hampton & Richmond Borough	3,500 (644 seated)	Club Owned Ground
• Havant & Waterlooville	5,300 (710 seated)	Club Owned Ground
• Hemel Hempstead Town	3,152 (300 seated)	Club Owned Ground
• Hungerford Town	3,034 (500 seated)	Club Owned Ground
• Maidstone United	4,200 (792 seated)	Club Owned Ground
• Oxford City	3,500	Unknown
• Slough Town	2,000	Ground Leased from Local Authority
• St Albans City	5,007 (667 seated)	Ground Leased from Local Authority
• Tonbridge Angels	3,000 (760 seated)	Ground Leased from Local Authority
• Welling United	4,000 (1,000 seated)	Ground Leased

Average seats (From available data): 860

Average capacity (From available data): 3,572

National League South Stadiums

Satellite Images from Google Maps

Bath City F.C.

Ground: Twerton Park

Capacity: 3,528 (1,006 seated)



Billericay Town F.C.

Ground: New Lodge

Capacity: 5,000 (2,000 seated)



Braintree Town F.C.

Ground: Cressing Road

Capacity: 4,222 (553 seated)



Chelmsford City F.C.

Ground: Melbourne Stadium

Capacity: 3,000 (1,300 seated)



Chippenham Town F.C.

Ground: Hardenhuish Park

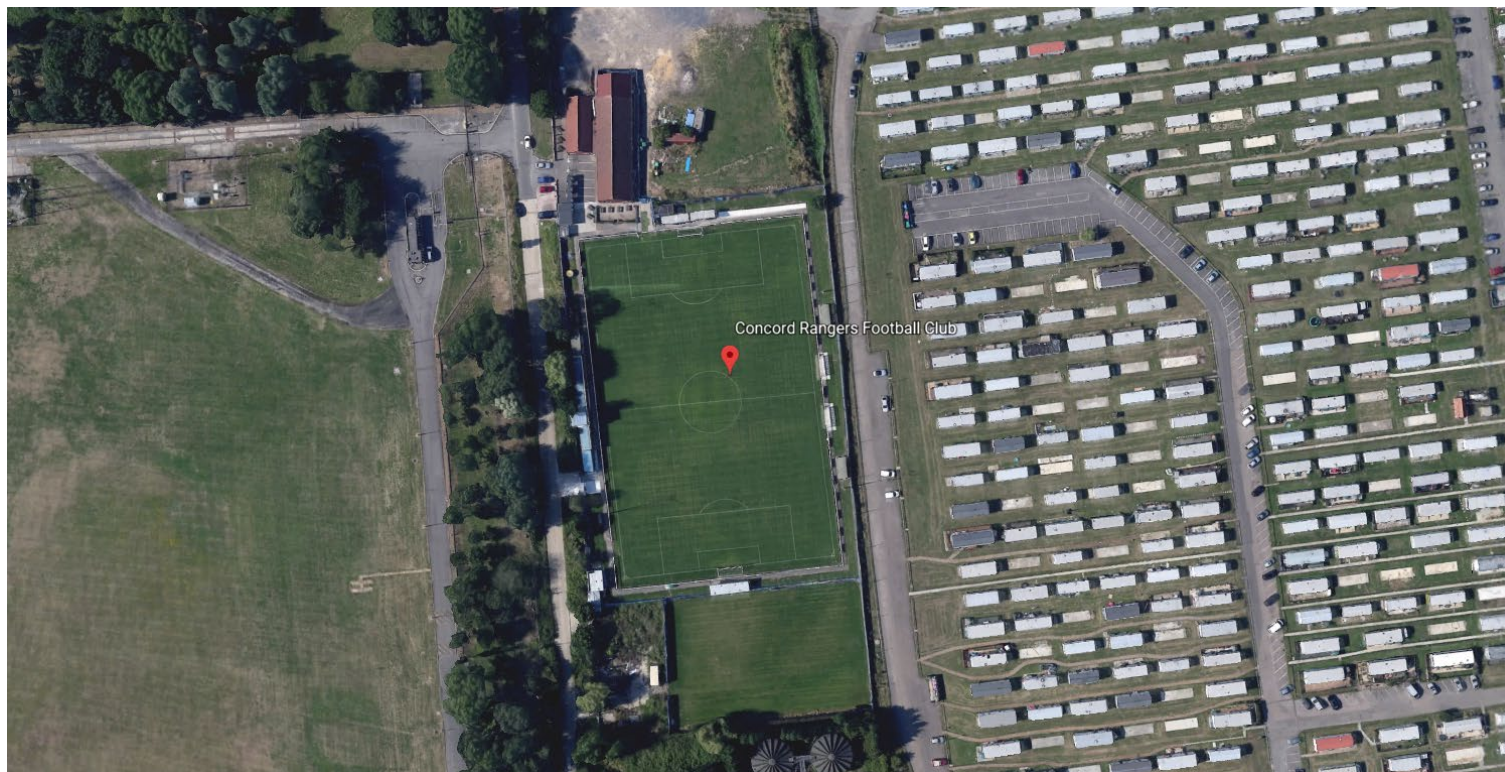
Capacity: 3,500 (800 seated)



Concord Rangers F.C.

Ground: Thames Road

Capacity: 3,300



Dartford F.C.

Ground: Princes Park

Capacity: 4,100 (642 seated)



Dorking Wanderers F.C.

Ground: Meadowbank

Capacity: 3,000 (522 seated)



Dulwich Hamlet F.C.

Ground: Champion Hill

Capacity: 3,000 (500 seated)



Eastbourne Borough F.C.

Ground: Priory Lane

Capacity: 4,151 (600 seated)



Ebbsfleet United F.C.

Ground: Stonebridge Road

Capacity: 4,769 (2,179 seats)



Hampton & Richmond Borough F.C.

Ground: The Beveree Stadium

Capacity: 3,500 (644 seated)



Havant & Waterlooville F.C.

Ground: Draper Tools Community Stadium

Capacity: 5,300 (710 seated)



Hemel Hempstead Town F.C.

Ground: Vauxhall Road

Capacity: 3,152 (300 seated)



Hungerford Town F.C.

Ground: Bulpit Lane

Capacity: 3,034 (500 seated)



Maidstone United F.C.

Ground: Gallagher Stadium

Capacity: 4,200 (792 seated)



Oxford City F.C.

Ground: Marsh Lane

Capacity: 3,500



Slough Town F.C.

Ground: Arbour Park

Capacity: 2,000



St Albans City F.C.

Ground: Clarence Park

Capacity: 5,007 (667 seated)



Tonbridge Angels F.C.

Ground: Longmead Stadium

Capacity: 3,000 (760 seated)



Welling United F.C.

Ground: Park View Road

Capacity: 4,000 (1,000 seated)



Current Isthmian League members

Premier Division

• Bishop's Stortford	4,525 (525 seated)	Club Owned Ground
• Bognor Regis Town	4,500 (350 seated)	Club Owned Ground
• Bowers & Pitsea	2,661 (300 seated)	Club Owned Ground
• Brightlingsea Regent	107 seated +150 covered terrace	Club Owned Ground
• Carshalton Athletic	5,000 (240 seated)	Ground Leased from Local Authority
• Cheshunt	3,500 (424 seated)	Ground Leased from Local Authority
• Corinthian-Casuals	2,000 (161 seated)	Club Owned Ground
• Cray Wanderers – Current Ground	5,000 (1,700 seated)	Groundshare with Bromley FC
• Cray Wanderers – Proposed	1,300 (388 seated)	Proposed Ground (planning stage)
• East Thurrock United	3,500 (160 seated)	Club Owned Ground
• Enfield Town	2,500	Ground Leased from Local Authority
• Folkestone Invicta	4,000 (336 seated)	Ground Leased from Local Authority
• Haringey Borough	2,500 (280 seated)	Club Owned Ground
• Hornchurch	3,500 (800 seated)	Ground Leased from Local Authority
• Horsham	1,300?	Club Owned Ground
• Kingstonian	2,000 (251 seated)	Groundshare with Corinthian-Casuals
• Leatherhead	3,400	Ground Leased
• Lewes	3,000	Ground Leased
• Margate	2,100 (400 seated)	Ground Leased from Local Authority
• Merstham	2,500 (174 seated)	Unknown
• Potters Bar Town	2,500 (250 seated)	Unknown
• Wingate & Finchley	1,500 (500 seated)	Unknown
• Worthing	4,000	Unknown

Average seats (From available data): 394

Average capacity (From available data): 2,897

Isthmian League South Stadiums

Satellite Images from Google Maps

Bishop's Stortford F.C.

Ground: Woodside Park. Completed in 1999.

Capacity: 4,525 (525 seated) - Seated stands on either side of the pitch, with covered terracing at each end



Bognor Regis Town F.C.

Ground: Nyewood Lane.

Capacity: 4,500 (350 seated) - mostly covered accommodation



Bowers & Pitsea F.C.

Ground: Len Salmon Stadium.

Capacity: 2,661 (300 seated) – seated stand on one side of the pitch, covered standing area next to the seated stand



Brightlingsea Regent F.C.

Ground: North Road.

Capacity: 107-seat stand plus 150-capacity covered terrace



Carshalton Athletic F.C.

Ground: War Memorial Sports Ground.

Capacity: 5,000 (240 seated)



Cheshunt F.C.

Ground: Theobalds Lane.

Capacity: 3,500 (424 seated) - main stand seating 250 on the halfway line, second seated stand on opposite side of pitch plus two small covered standing areas behind each goal.



Corinthian Casuals F.C.

Ground: King George's Field.

Capacity: 2,000 (161 seated) - Covered standing behind both goals & stand along one side of the pitch (incl. small section of seating)



Cray Wanderers F.C.

Ground: Hayes Lane.

Capacity: 5,000 (1,300 seated) – Planning Granted, unsure of current status.



East Thurrock United F.C.

Ground: Rookery Hill.

Capacity: 3,500 (160 seated) - 160-seat main stand with covered terrace on the other side of the pitch, together with two covered areas behind one goal.



Enfield Town F.C.

Ground: Queen Elizabeth II Stadium.

Capacity: 2,500



Folkestone Invicta F.C.

Ground: Cheriton Road.

Capacity: 4,000 (336 seated)



Haringey Borough F.C.

Ground: Coles Park.

Capacity: 2,500 (280 seated)



Hornchurch F.C.

Ground: Hornchurch Stadium.

Capacity: 3,500 (800 seated)



Horsham F.C.

Ground: The Camping World Community Stadium.

Capacity: 1,300?



Kingstonian F.C.

Groundshare with Corinthian Casuals

Leatherhead F.C.

Ground: Fetcham Grove.

Capacity: 3,400



Lewes F.C.

Ground: The Dripping Pan.

Capacity: 3,000



Margate F.C.

Ground: Hartsdown Park.

Capacity: 2,100 (400 seated)



Merstham F.C.

Ground: Moatside.

Capacity: 2,500 (174 seated)



Potters Bar Town F.C.

Ground: The LA Construction Stadium.

Capacity: 2,500 (250 seated) - 2 stands (2018-19) with capacity for 100 seats & 100 people standing



Wingate & Finchley F.C.

Ground: The Maurice Rebak Stadium.

Capacity: 1,500 (500 seated)



Worthing F.C.

Ground: Woodside Road.

Capacity: 4,000



Current Southern League- Div 1 Central

• AFC Dunstable	3,200 (350 seated)
• Aylesbury United	5,000 (284 seated)
• Barton Rovers	4000 (160 seated)
• Bedford Town	3,000 (300 seated)
• Berkhamsted	2,500 (170 seated)
• Biggleswade	3,000 (300 seated)
• Colney Heath	Unknown
• Didcot Town	3,500 (350 seated)
• FC Romania	3,500 (424 seated)
• Harlow Town FC	3,500 (500 seated)
• Hertford Town	6,500 (200 seated)
• Kempston Rovers	2,000 (152 seated)
• Kidlington	Unknown
• North Leigh	2000(175 seated)
• St Neots Town	3,500 (250 seated)
• Thame United	2,500
• Waltham Abbey	550
• Wantage Town	1,500
• Ware	3,300 (250 seated)
• Welwyn Garden City	Unkown

Average seats (From available data): 245

Average capacity (From available data): 3,120

(Local clubs highlighted)

Southern League Div 1 Central Stadiums

Satellite Images from Google Maps

(Local clubs only)

Harlow Town

Ground: The Harlow Arena

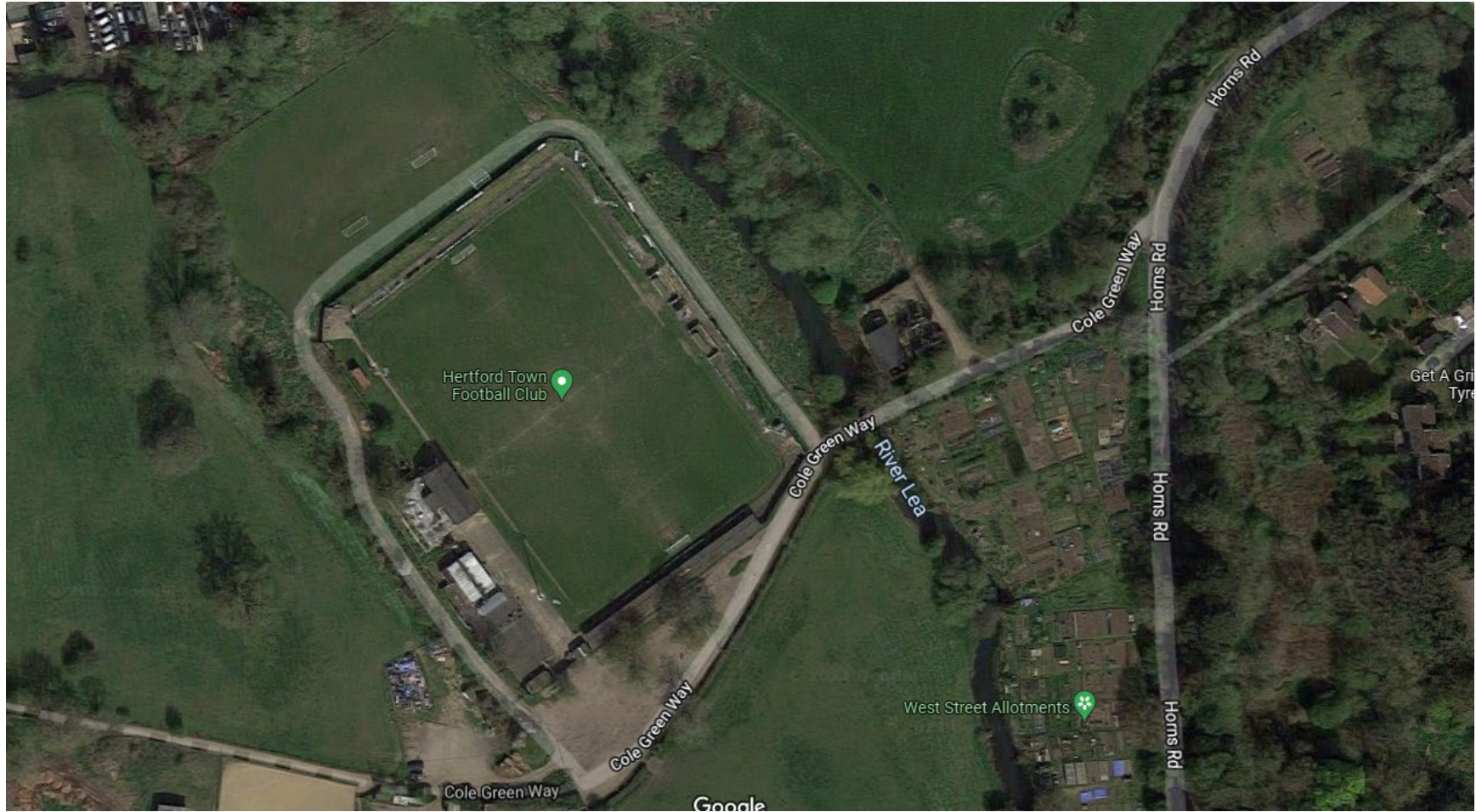
Capacity: 3,500 (500 seated)



Hertford Town

Ground: Hertingfordbury Park

Capacity: 6,500 (200 seated)



Ware

Ground: Wodson Park

Capacity: 3,300 (250 seated)

