

BOROUGH OF BROXBOURNE
ROAD TRAFFIC REGULATION ACT 1984

THE BOROUGH OF BROXBOURNE (VARIOUS ROADS)
(DISABLED PERSONS' PARKING PLACES) ORDER No. 2014

THE COUNCIL OF THE BOROUGH OF BROXBOURNE, pursuant to arrangements made with the Hertfordshire County Council under Section 19 of the Local Government Act 2000 and the Local Authorities (Arrangements for the Discharge of Functions) (England) Regulations 2000, and in exercise of its powers under Sections 32 and 35 of the Road Traffic Regulation Act 1984, (hereinafter called "the 1984 Act") and of all other enabling powers, and after consultation with the Chief Officer of Police in accordance with Part III of Schedule 9 of the Act of 1984, hereby make the following Order:

1(1) In this Order

"Disabled Person's Badge" has the same meaning as in The Local Authorities' Traffic Orders (Exemptions for Disabled Persons) (England) Regulations 2000.

"Disabled Person's Vehicle" has the same meaning as in Section 142(1) of the 1984 Act

"Driver", in relation to a vehicle waiting in a Parking Place, means the person driving the vehicle at the time it was left in the Parking Place

"Parking Place" means any part of a road authorised by this Order to be used as a parking place

(2) For the purposes of this Order a vehicle shall be regarded as displaying a Disabled Person's Badge in the relevant position if:

- (i) in the case of a vehicle fitted with a dashboard or fascia panel, the badge is exhibited thereon so that the serial number and the date of expiry of the badge is legible from outside the vehicle; or
- (ii) in the case of a vehicle not fitted with a dashboard or fascia panel, the badge is exhibited in a conspicuous position on the vehicle so that the serial number and the date of expiry of the badge is legible from outside the vehicle.

2(1) Those parts of the roads specified in Column 1 of Schedule 1 to this Order are authorised to be used in a position specified in Column 2 of the said Schedule 1 and subject to the following provisions of this Order, as Parking Places at any time for Disabled Person's Vehicles which display in the relevant position a Disabled Person's Badge.

(2) Nothing in paragraph (1) of this Article shall restrict the power of the Council, for preventing obstruction of the roads, by order, or by notice on the occasion of any public procession, rejoicing or illumination, or when the roads are thronged or liable to be obstructed, to close the Parking Place.

3 Where in Column 1 of Schedule 1 to this Order a Parking Place is described as available for a Disabled Person's Vehicle which displays in the relevant position a Disabled Person's Badge, the Driver of a vehicle shall not permit it to wait in that Parking Place unless it is:

- (a) a Disabled Person's Vehicle on which is displayed in the relevant position a Disabled Person's Badge, and
- (b) wholly within the limits of the Parking Place.

- 4 A Driver of a vehicle shall not use a Parking Place:-
- (a) so as unreasonably to prevent access to any premises adjoining the road, or the use of the road by other persons, or so as to be a nuisance;
 - (b) when for preventing obstruction of the road the Council shall by order or by notice made on the occasion of any public procession, rejoicing or illumination or when the roads are thronged or liable to be obstructed have closed that Parking Place and exhibited notice of such closing on or near the Parking Place.
- 5 The Driver of a motor vehicle using a Parking Place shall stop the engine as soon as the vehicle is in a position in the Parking Place, and shall not start the engine except when about to change the position of the vehicle in or to depart from the Parking Place.
- 6 No person shall use a vehicle, while it is in a Parking Place, in connection with the sale of any article to persons in or near the Parking Place or in connection with the selling or offering for hire of his skill or service.
- 7 Subject to the provision hereto, when a vehicle is left in a Parking Place in contravention of any of the provisions contained in Articles 3 and 4 of this Order a person authorised in that behalf by the Council may remove the vehicle or arrange for it to be removed from that Parking Place provided that when a vehicle is waiting in a Parking Place in contravention of the provisions of Articles 3 and 4 of this Order, a person authorised in that behalf by the Council may alter or cause to be altered the position of the vehicle in order that its position shall comply with that provision.
- 8 Any person removing a vehicle or altering its position by virtue of Article 7 of this Order may do so by towing or driving the vehicle or moving the vehicle in such other manner as he may think necessary and may take such measures in relation to the vehicle as he may think necessary to enable him to remove it or alter its position, as the case may be.
- 9 When a person authorised by the Council removes or makes arrangements for the removal of a vehicle from a Parking Place by virtue of Article 7 of this Order, he shall make such arrangements as may be reasonably necessary for safe custody of the vehicle.
- 10 The lengths of road specified in Schedule 2 of this Order are no longer authorised for the sole parking of disabled persons vehicles.
- 11 The provisions of The Borough of Broxbourne (Control of Parking) (Consolidation) Order 2011 ("the 2011 Order") are hereby revoked but only in so far as they affected by the restrictions imposed by this Order.
- 12 Paragraph 1 of Schedule 1 of the Borough of Broxbourne (Various Roads) (Disabled Persons Parking Places) Order No. 2 2013 is revoked.
- 13 This Order shall come into operation on 12th May 2014 and may be cited as the Borough of Broxbourne (Various Roads) (Disabled Persons' Parking Places) Order No. 2014.

SCHEDULE 1

Column 1	Column 2
Description of the Parking Place	Position in which the vehicle may wait
1 ST AUGUSTINES DRIVE, BROXBOURNE east side from a point 3m south of a point in line with the northern flank wall of No.11 southward for a distance of 6.0m.	Parallel and adjacent to the kerb
2 BARROW LANE, CHESHUNT south side from a point 3.5m east of a point in line with the western flank wall of Nos. 103 & 105 Barrow Lane eastwards for a distance of 6.0m.	Parallel and adjacent to the kerb
3 CHURCHGATE, CHESHUNT west side from a point 0.5m north of a point in line with the boundary between Nos. 113 & 115 Churchgate northward for a distance of 5.5m.	Parallel and adjacent to the kerb
4 DEWHURST ROAD, CHESHUNT north side from a point 0.6m west of a point in line with the boundary between Nos. 11 & 13 Dewhurst Road eastward for a distance of 6m.	Parallel and adjacent to the kerb
5 DEWHURST ROAD, CHESHUNT west side from a point 11m north of a point in line with the northern front wall of No.77 Dewhurst Road northwards for a distance of 2.4m	Lengthwise at 90° to the kerb in a West / East direction
6 ELDERBEK, CHESHUNT west side from a point in line with the boundary between Nos.23 & 24 Elderbek southwards for a distance of 2.4m	Lengthwise at 90° to the kerb in a Northwest / Southeast direction
7 ELDERBEK, CHESHUNT west side from a point 1.7m south of a point in line with the boundary between of Nos.63 & 64 Elderbek southwards for a distance of 6.0m	Parallel and adjacent to the kerb
8 SMARTS GREEN, CHESHUNT north side from a point 10.3m west of a point in line with the eastern flank wall of No.35 Smarts Green westwards for a distance of 2.5m	Lengthwise at 90° to the kerb in a North / South direction
9 SMARTS GREEN, CHESHUNT south side from a point 12.4m west of a point in line with the eastern flank wall of No 45 Smarts Green westwards for a distance of 2.5m	Lengthwise at 90° to the kerb in a South / North direction
10 CONDUIT LANE, HODDESDON north side from a point 7.0m east of a point in line with the eastern rear wall of No.86 High Street eastwards for a distance of 6.0m	Parallel and adjacent to the kerb

- | | | |
|----|---|--|
| 11 | FOXTON ROAD, HODDESDON south side from a point 5.0m west of a point in line with the eastern flank wall of No.35 Foxtan Road westwards for a distance of 6.0m | Parallel and adjacent to the kerb |
| 12 | HIGH STREET, HODDESDON west side from a point 0.5m south of a point in line with the southern flank wall of No.1 Fawkon Walk northwards for a distance of 6.0m | Parallel and adjacent to the kerb |
| 13 | HIGH STREET, HODDESDON west side from a point 10.1m south of a point in line with the northern flank wall of No.61 High Street southwards for a distance of 6.0m | Parallel and adjacent to the kerb |
| 14 | HIGH STREET, HODDESDON west side from a point 16.1m south of a point in line with the northern flank wall of No.61 High Street southwards for a distance of 6.0m | Parallel and adjacent to the kerb |
| 15 | HIGH STREET, HODDESDON east side from a point 6.0m south of a point in line with the boundary between Nos. 72 & 74 High Street southwards for a distance of 6.0m | Parallel and adjacent to the kerb |
| 16 | HIGH STREET, HODDESDON east side from a point 12.0m south of a point in line with the boundary between Nos. 72 & 74 High Street southwards for a distance of 6.0m | Parallel and adjacent to the kerb |
| 17 | HIGH STREET, HODDESDON east side from a point 18.0m south of a point in line with the boundary between Nos. 72 & 74 High Street southwards for a distance of 6.0m | Parallel and adjacent to the kerb |
| 18 | MIDDLEFIELD ROAD, HODDESDON south side from a point 1.6m west of a point in line with the boundary between Nos.37 & 39 Middlefield Road westward for a distance of 6.0m | Parallel and adjacent to the kerb |
| 19 | MURCHISON ROAD, HODDESDON south side from a point 5.5m east of a point in line with the western flank wall of No. 37 Murchison Road eastward for a distance of 6.0m | Parallel and adjacent to the kerb |
| 20 | CORNWALL CLOSE, WALTHAM CROSS east side from a point 1.5m north of a point in line with the southern flank wall of No. 14 Cornwall Close southward for a distance of 2.4m | Lengthwise at 90° to the kerb in a East / West direction |
| 21 | EASTFIELD ROAD, WALTHAM CROSS east side from a point 6.0m north of a point in line with the northern flank wall of No.124 Eastfield Road northward for a distance of 6.0m | Parallel and adjacent to the kerb |

- | | | |
|----|--|--|
| 22 | TRINITY LANE, WALTHAM CROSS north side from a point in line with the boundary between Nos. 133 & 135 Trinity Lane for a distance of 5.0m | Parallel and adjacent to the kerb |
| 23 | FAIRFIELD DRIVE, WORMLEY south side from a point 11.8m east of a point in line with the eastern front wall of No. 26 Fairfield Drive eastward for a distance of 2.8m | Lengthwise at 90° to the kerb in a South / North direction |

SCHEDULE 2

Description of those parking places to be removed

Cozens Lane East, Broxbourne north side of a parking area in Silverfield from a point in line with the western flank wall of No.18 Cozens Lane East eastward for a distance of 2.4 metres.

Albury Grove Road, Cheshunt south side from a point in line with the boundary between Nos.25 & 27 westwards for a distance of 6 metres.

Appleby Street, Cheshunt south side from a point 2m west of a point in line with the eastern flank wall of No.177 westwards for a distance of 6 metres.

Beltona Gardens, Cheshunt east side from a point in line with the northern boundary wall of No.19 southwards for a distance of 3 metres.

Dewhurst Road, Cheshunt south side from a point in line with a point 2 metres west of the western flank wall of No. 82 eastward for a distance of 5 metres.

Harkness, Cheshunt east side from a point in line with the northern boundary wall of No.62 southward for a distance of 2.5 metres.

The Mead, Cheshunt south side from a point 0.5m east of a point in line with the boundary between Nos.13 & 14 eastwards for a distance of 3.4 metres.

Beechfield, Hoddesdon north side from a point in line with the boundary wall between Nos.202 & 204 eastwards for a distance of 6 metres.

Middlefield Road, Hoddesdon west side from a point in line with the boundary between Nos.12 & 14 northwards for a distance of 6 metres.

Whitley Road, Hoddesdon south side from a point 2.3 metres west of a point in line with the western flank wall of No.95 eastwards for a distance of 6 metres.

Juniper Close, Turnford south side of parking area from a point in line with the eastern flank wall of No.38 westwards for a distance of 2.4 metres.

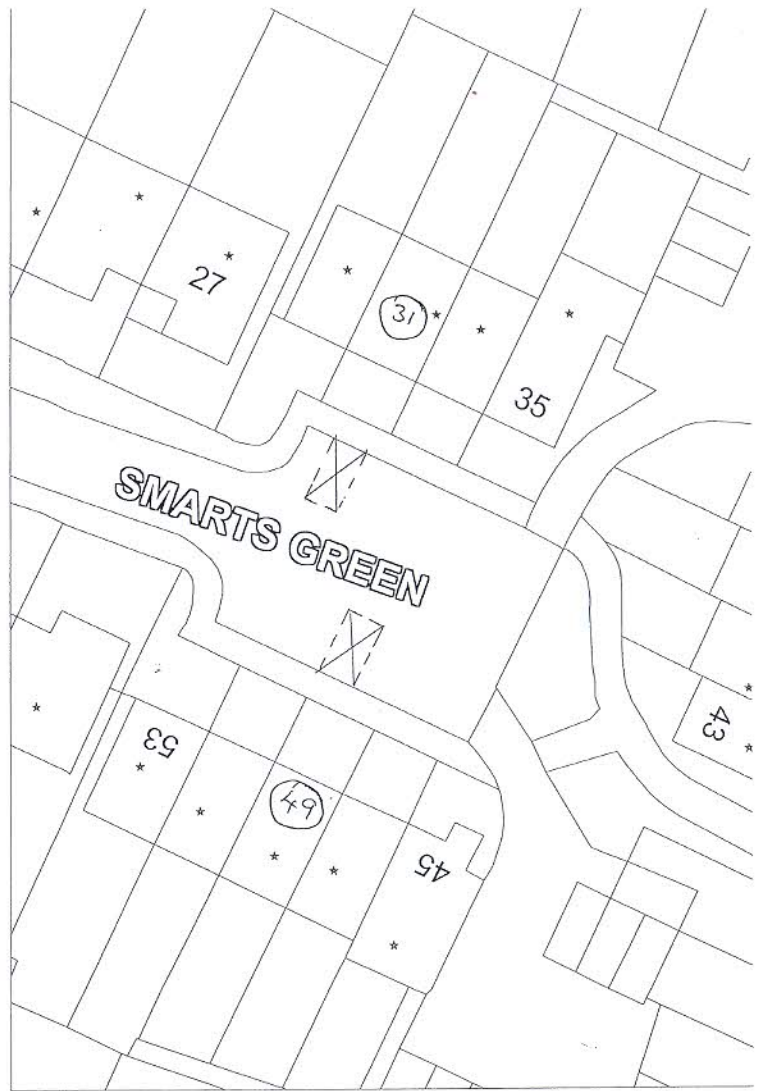
Barbel Close, Waltham Cross north side from a point 0.75 metres east of the boundary between Nos.9 – 15 & 17 – 23 eastwards for a distance of 6 metres.

Eastfield Road, Waltham Cross east side from a point in line with the boundary between Nos 100 & 102 northwards for a distance of 4.6 metres.

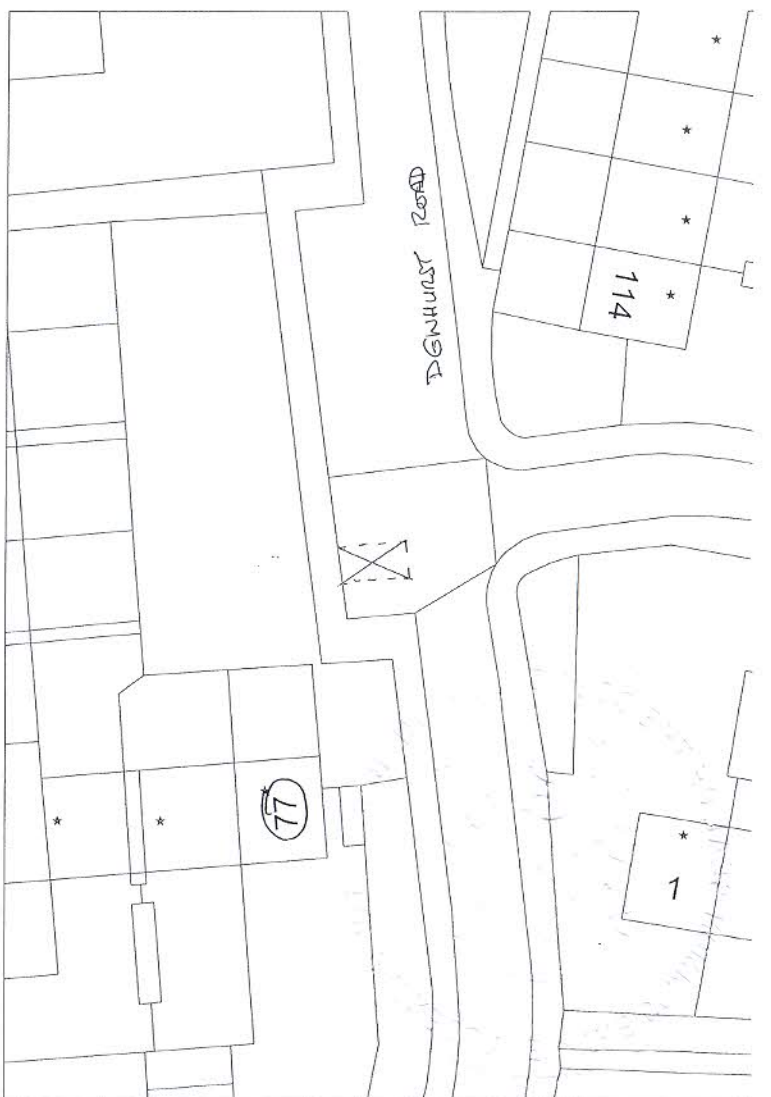
Hurst Drive, Waltham Cross east side from a point in line with the boundary between Nos.22 & 24 southwards for a distance of 6 metres.

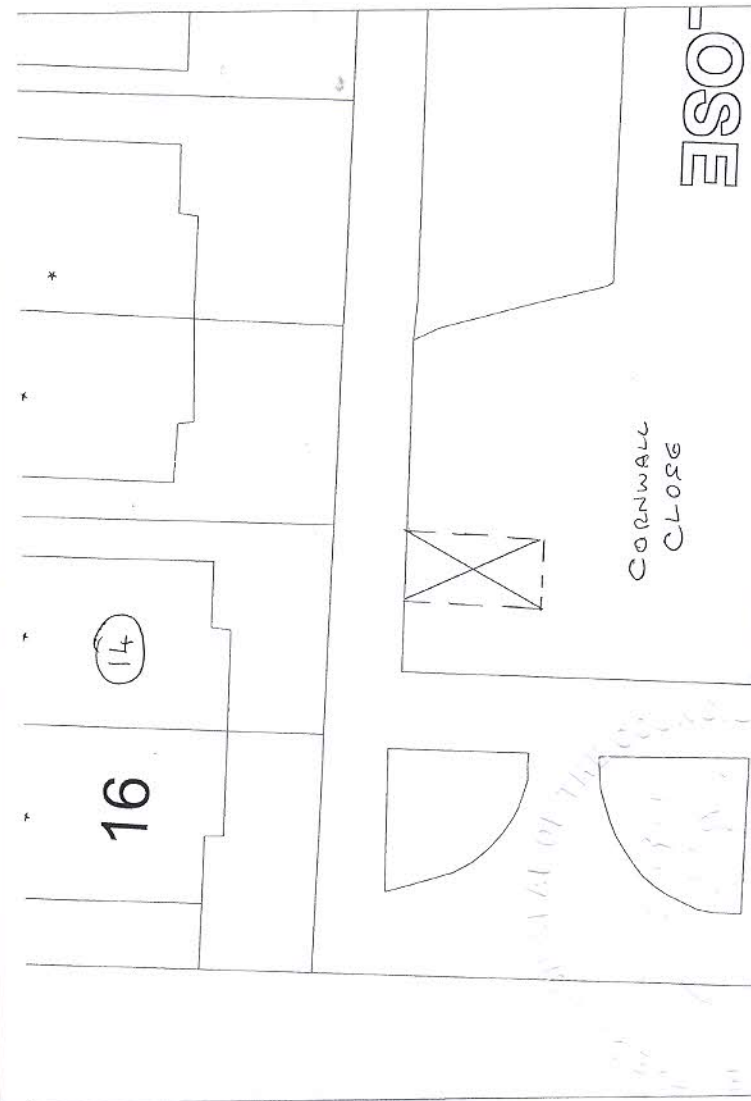
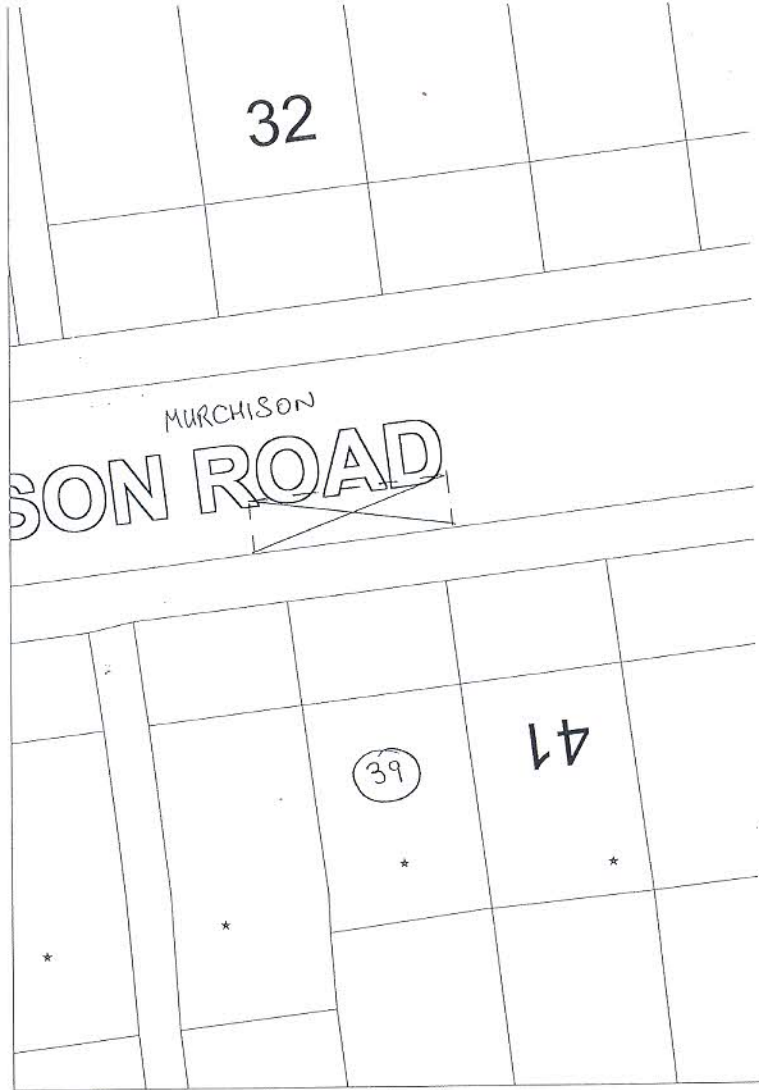
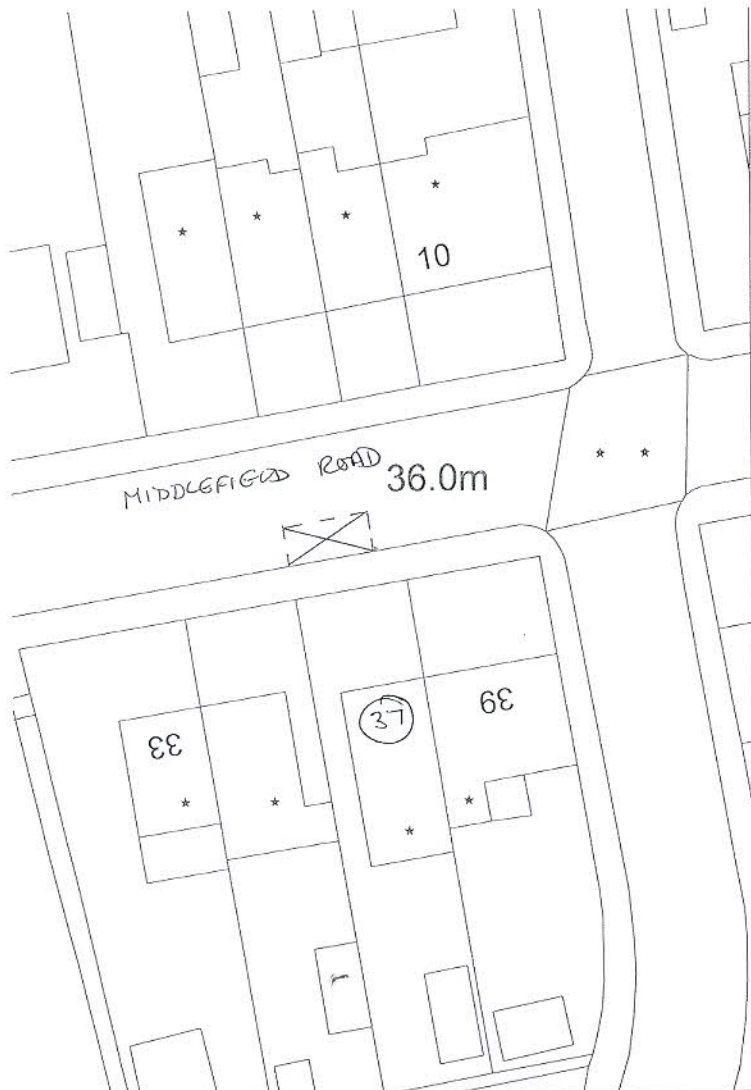
Swanfield Road, Waltham Cross south side from a point 0.5 metres east of the boundary between Nos.70-76 eastwards for a distance of 6 metres.

York Road, Waltham Cross west side from a point in line with the boundary between Nos. 8 & 10 southwards for a distance of 6 metres.

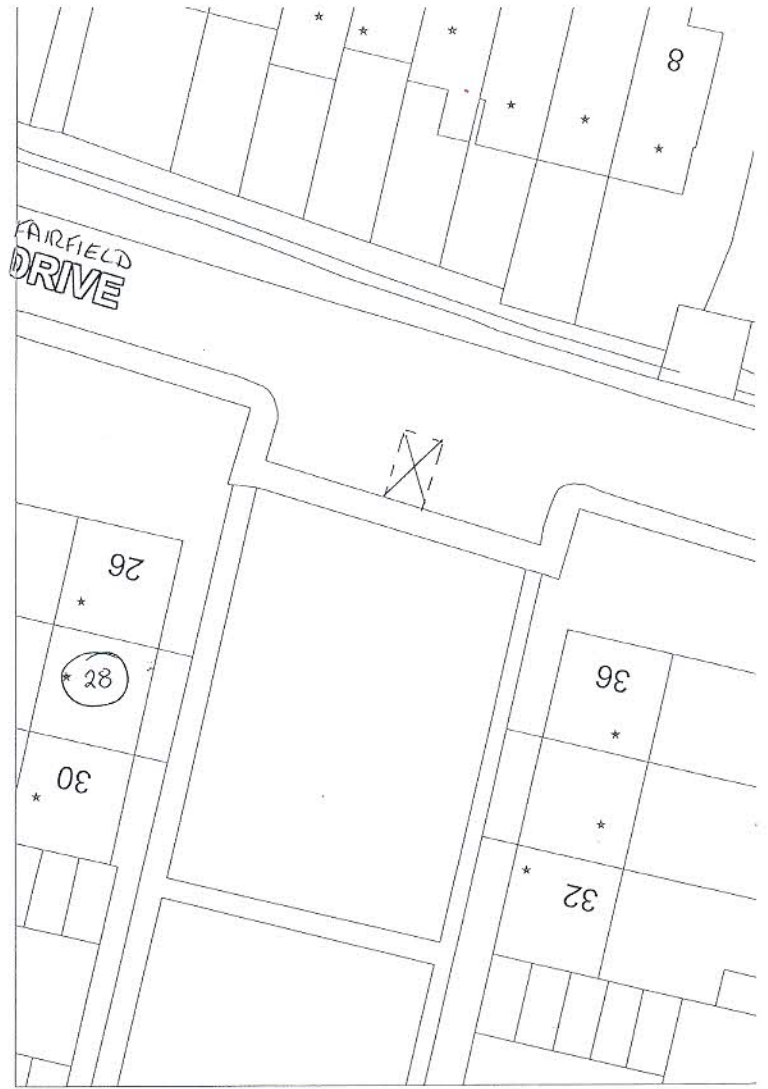
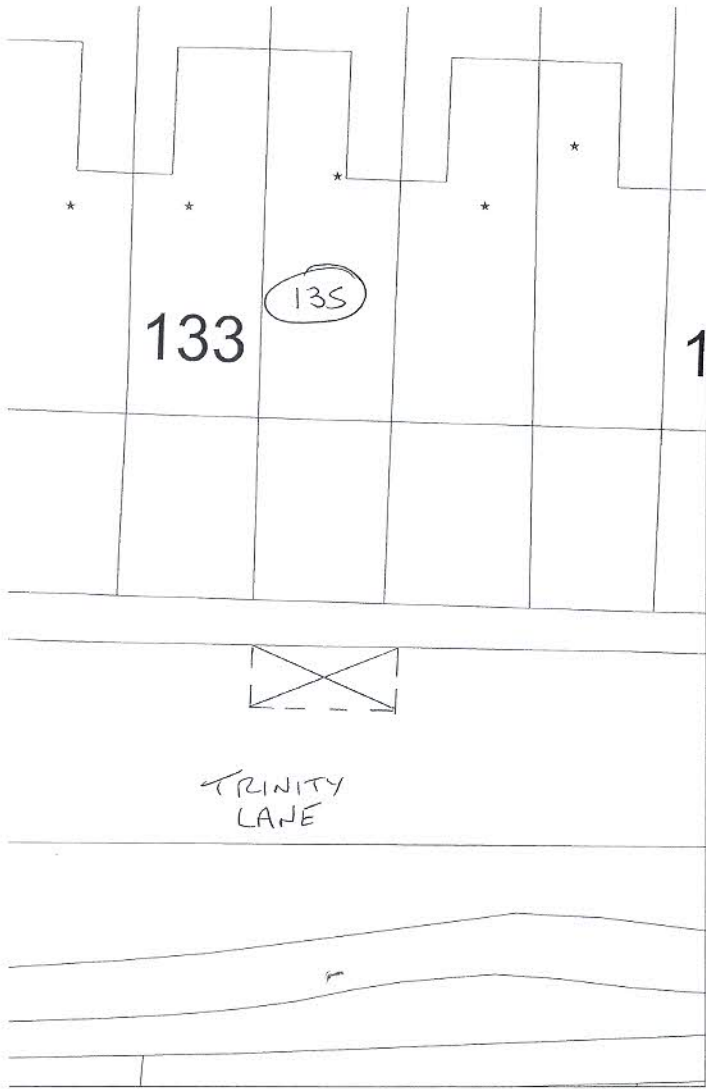


Handwritten signature
 AUTHORISED SIGNATORY





[Signature]
 AUTHORIZED SIGNATORY



IN WITNESS whereof the Common Seal of the Council of the Borough of Broxbourne has hereunto been affixed on this 12th May 2014

The Common Seal of the COUNCIL OF THE BOROUGH OF BROXBOURNE was hereunto affixed in the presence of:-



Gain Miles

~~Chief Executive Officer~~
AUTHORISED SIGNATORY

Dated 12th May 2014

ROAD TRAFFIC REGULATION ACT 1984

THE BOROUGH OF BROXBOURNE
(VARIOUS ROADS) (DISABLED
PERSON'S PARKING PLACES)
ORDER No. 2014